

CONNECT + CONTROL



Pegler Yorkshire



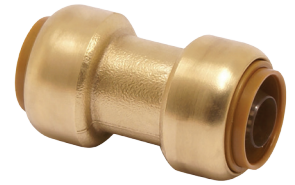
**MARKET LEADING METAL
PUSH-FIT SYSTEM**

CONNECT WITH CONFIDENCE

DISTRIBUTED BY

HYDROFLOW
LEADING WITH KNOWLEDGE

Tectite



THE RANGE

Tectite fittings from Pegler Yorkshire makes jointing faster and more cost effective than other jointing methods - a fittings system which simply pushes together in seconds to create a perfect joint, every time.



TECTITE PUSH-FIT BENEFITS

A completely heat - free system offering the following benefits:

- ✚ Improved installation time over traditional methods
- ✚ No naked flames (improved safety)
- ✚ Perfectly clean internal bore (less finishing/cleaning required)
- ✚ No localised annealing from high temperature working
- ✚ System does not need to be "dry" for effective jointing



THE PERFECT SOLUTION ALL ROUND

A heat - free, time saving jointing method which guarantees uncontaminated installation. Ideal for domestic maintenance and refurbishment and new build.

RENOWNED PEGLER YORKSHIRE QUALITY AND RELIABILITY

Tectite products offer the bonus of an enhanced 25 - year warranty. Pegler Yorkshire also operates a Quality Management System for the development, manufacture and supply of fittings, tube, valves and accessories which complies with the requirements of BS EN ISO 9001:2008.

STANDARDS AND APPROVALS

WRAS All Tectite Sprint, Tectite Classic, Tectite Pro and Tectite 316 fittings are listed and comply with the requirements of the United Kingdom Water Regulations/Byelaws (Scotland).

DVGW Tectite Classic and Tectite 316 fittings have been approved by the German approval authority. They comply with DVGW Arbeitsblatt W534, which covers fittings and joints for tubes in potable water installations.

Tectite Classic fittings are also approved by **KIWA** (Dutch certification), **SITAC** (Norway, Sweden and Finland certification) and **CSTB** (French certification). Tectite 316 fittings are also approved by **SVGW** (Swiss certification).



Tectite - PEX barrier pipe is kitemark approved



The Tectite range has been certified by the WRAS and is audited periodically



Applicable Tectite products are DVGW approved for the European market



WM Licence No. 022657



PRODUCT OVERVIEW

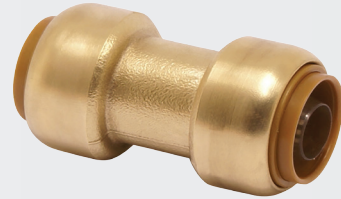
CONNECT + CONTROL

TECTITE

The original Tectite fitting and proven in the field for over 15 years, Tectite can be used for applications where a demountable fitting is required.

FEATURES

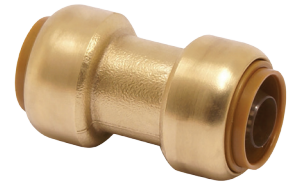
- + Demountable
- + Available in sizes 16mm to 20mm
- + Manufactured from DZR brass or gunmetal
- + To be used PEX pipe (with liners).
- + Suitable for use on hot and cold water services, heating applications and low temperature hot water services
- + WRAS approved



DESCRIPTION	SIZES (mm)
Straight Coupling	16-20
Reducing Coupling	16-20
Straight Female Connector	16-20
Straight Male Connector	16-20
Elbow	16-20
Male Elbow	16-20
Female Elbow	16-20
Backplate Female Elbow	16-20
Large Backplate Male Elbow	16-20

DESCRIPTION	SIZES (mm)
Large Top Plate Male Elbow	16-20
Equal Tee	16-20
Female Branch Tee	16-20
Reduced Tee	16-20
Straight Adaptor	16-20
Angled Adaptor	16-20
Stop End	16-20
Flare Adaptor	16-20
Ball Valve	16-20

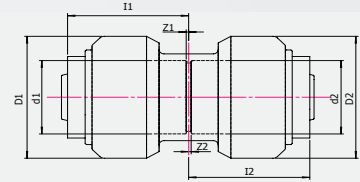
FEATURE	
Size Range	16mm to 20mm
Demountable	✓
Electrical Continuity	-
Applications	Potable Water, Heating, Hot Water, Cold Water, Grey/Rain Water, Recycled Water
Tube Compatability	PEX
Material	DZR Brass
Guarantee	25 Year
WRAS	✓



PRODUCT RANGE

Straight Coupling

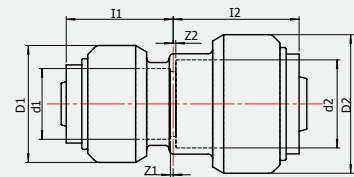
Push-fit Pex x Push-fit Pex



Size	Each/Bag	d1	d2	I1	I2	D1	D2	z1	z2	Code
16mm	10	16	16	25	25	27	27	0.5	0.5	TTC1616
20mm	5	20	20	29	29	32	32	0.5	0.5	TTC2020

Reducing Coupling

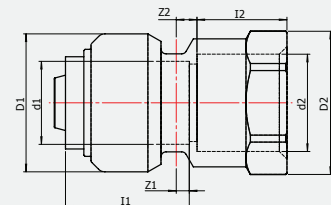
Push-fit Pex x Push-fit Pex



Size	Each/Bag	d1	d2	I1	I2	D1	D2	z1	z2	Code
20 x 16mm	10	16	20	25	29	27	32	0.5	0.5	TTTC2016

Straight Female Connector

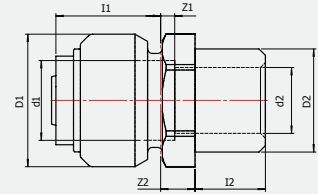
Push-Fit Pex x BSP Female Thread



Size	Each/Bag	d1	d2	I1	I2	D1	D2	z1	z2	Code
16mm x 15mm (1/2")	10	16	G1/2	17.5	27	27	28A/F	2.5	4	TTFC1615
16mm x 20mm (3/4")	10	16	G3/4	19	27	27	30A/F	1.5	4	TTFC1620
20mm x 20mm (3/4")	5	20	G3/4	19.5	32	32	30A/F	4	5	TTFC2020

Straight Male Connector

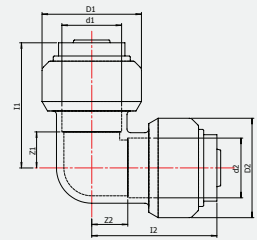
Push-Fit Pex x BSP Male Thread



Size	Each/Bag	d1	d2	l1	l2	D1	D2	z1	z2	Code
16mm x 15mm (1/2")	10	16	13.5	21	14.5	27	R1/2	3	7	TTMC1615
16mm x 20mm (3/4")	10	16	15	22.5	16	27	R3/4	2	6.5	TTMC1620
20mm x 15mm (1/2")	10	20	19	22.5	15.5	32	R3/4	6	7	TTMC2016
20mm x 20mm (3/4")	10	20	13.5	22.5	14.5	32	R1/2	6	8.5	TTMC2020

Elbow

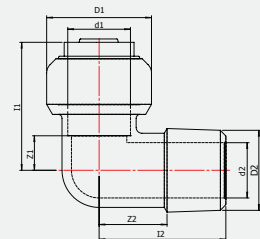
Push-fit Pex x Push-fit Pex



Size	Each/Bag	d1	d2	l1	l2	D1	D2	z1	z2	Code
16mm	10	16	16	34	34	27	27	10	10	TTE1616
20mm	5	20	20	39	39	32	32	11	11	TTE2020

Male Elbow

Push-fit Pex x BSP Taper Male Thread

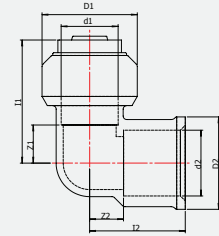


Size	Each/Bag	d1	d2	l1	l2	D1	D2	z1	z2	Code
16mm x 1/2"	10	16	14	33	32.5	27	R1/2	9	17.5	TTME1615



Female Elbow

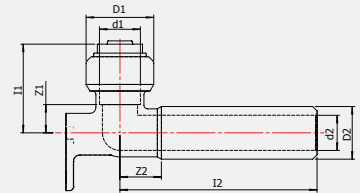
Push-fit Pex x BSP Female Thread



Size	Each/Bag	d1	d2	l1	l2	D1	D2	z1	z2	Code
16mm x 1/2" (15mm)	10	16	G1/2	35	27	27	26	11	9.5	TTFE1615
20mm x 3/4" (20mm)	5	20	G3/4	40.5	34	32	33.5	12	15	TTFE2020

Large Backplate Male Elbow

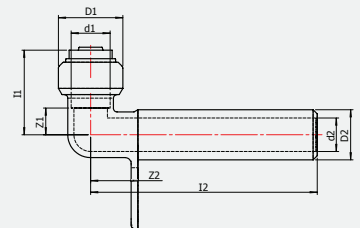
Push-fit Pex x BSP Male Thread



Size	Each/Bag	d1	d2	l1	l2	D1	D2	z1	z2	Code
16mm x 1/2" (15mm) - 75mm	1	16	14	35	78.5	27	G1/2	11.5	16.5	TTMWE1615-75
16mm x 1/2" (15mm) - 100mm	1	20	19	40	178	32	G3/4	11.5	16.5	TTMWE1615-100
16mm x 1/2" (15mm) - 185mm	1	20	14	40	78	32	G1/2	11.5	16.5	TTMWE1615-185
20mm x 1/2" (15mm) - 100mm	1	16	14	40	178	27	G1/2	11.5	16.5	TTMWE2015-100
20mm x 1/2" (15mm) - 200mm	1	16	14	34	163	27	G1/2	10	16.5	TTMWE2015-200
20mm x 3/4" (20mm) - 200mm	1	16	14	35	53.5	27	G1/2	11.5	16.5	TTMWE2020-200

Large Top Plate Male Elbow

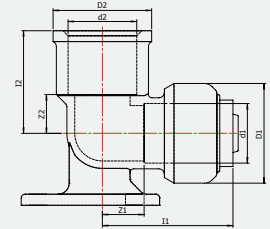
Push-fit Pex x BSP Male Thread



Size	Each/Bag	d1	d2	l1	l2	D1	D2	z1	z2	Code
16mm x 1/2" (15mm) - 100mm	1	16	14	35	95	27	G1/2	11.5	20	TTMTE1615-100

Backplate Female Elbow

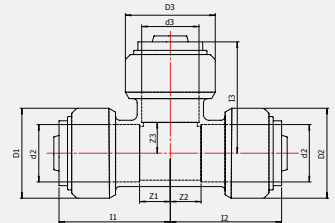
Push-fit Pex x BSP Female Thread



Size	Each/Bag	d1	d2	l1	l2	D1	D2	z1	z2	Code
16mm x 1/2" (15mm)	5	16	G1/2	35	28	27	26.5	11	10.5	TTFWE1615

Equal Tee

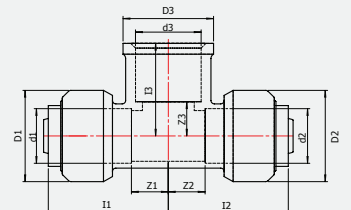
Push-fit Pex on all ends



Size	Each/Bag	d1	d2	l1	l2	D1	D2	z1	z2	d3	l3	D3	z3	Code
16mm	5	16	16	34	34	27	27	10	10	16	34	27	10	TTET1616
20mm	5	20	20	39.5	39.5	32	32	11	11	20	39.5	32	11	TTET2020

Female Branch Tee

Push-fit Pex x BSP Female Thread

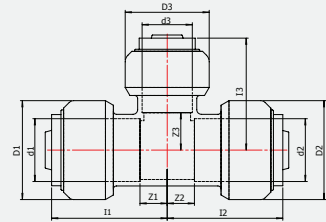


Size	Each/Bag	d1	d2	l1	l2	D1	D2	z1	z2	d3	l3	D3	z3	Code
16 x 16 x 1/2" (15mm)	5	16	16	34.5	34.5	27	27	10.5	10.5	G1/2	27.5	26	10	TTFT1615



Reduced Tee

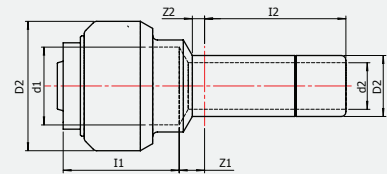
Push-fit Pex on all ends



Size	Each/Bag	d1	d2	I1	I2	D1	D2	z1	z2	d3	I3	D3	z3	Code
20 x 20 x 16mm	5	20	20	37	37	32	32	9	9	16	36	27	12	TTRT202016
20 x 16 x 20mm	5	20	16	39	35	32	27	10.5	10.5	20	39	32	10.5	TTRT201620
20 x 16 x 16mm	5	20	16	37.5	33	32	27	9	9	16	36	27	12	TTRT201616

Straight Adaptor

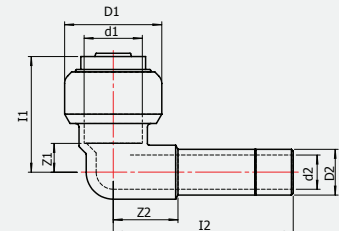
Push-fit Pex x Copper Press



Size	Each/Bag	d1	d2	I1	I2	D1	D2	z1	z2	Code
16 x 15mm CU	10	16	9.5	24	29.5	27	12.7	5.5	2.5	TTCP1615
20 x 20mm CU	10	20	16	29	33	32	19	5	3	TTCP2020

Angled Adaptor

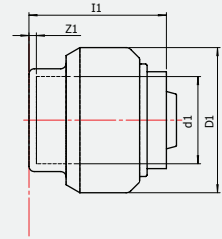
Push-fit Pex x Copper Press



Size	Each/Bag	d1	d2	I1	I2	D1	D2	z1	z2	Code
16 x 15mm CU	10	16	9.5	32	50	27	12.7	8	18	TTCP1515
20 x 20mm CU	5	20	16	37	57	32	19	8.5	20	TTCP2020

Stop End

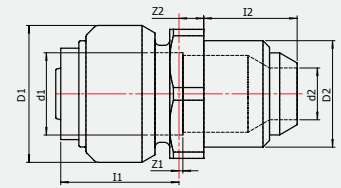
Push-fit Pex ends for use on tube



Size	Each/Bag	d1	I1	D1	z1	Code
16mm	10	16	23.5	27	1.5	TTSE16
20mm	10	20	30	32	1.5	TTSE20

Flare Adaptor

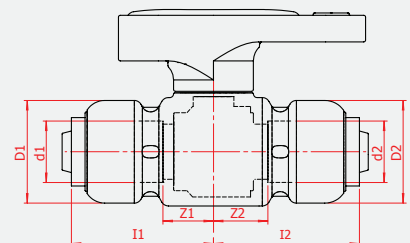
Push-fit x Flare



Size	Each/Bag	d1	d2	I1	I2	D1	D2	z1	z2	Code
16 x 15mm Flare	10	16	10	23.5	18.5	27	R1/2	1	5	TTFCC1615
20 x 20mm Flare	10	20	16	24.5	21	32	R3/4	4	3.5	TTFCC2020

Ball Valve

Push-fit Pex - Push-fit



Size	Each/Bag	d1	d2	I1	I2	D1	D2	z1	z2	Code
16 x 16mm	1	16	16	38	38	27	27	13.5	13.5	TTBV1616
20 x 20mm	1	20	20	45	45	32	32	16	16	TTBV2020



TECHNICAL DATA

MATERIALS SPECIFICATION AND MANUFACTURING STANDARDS

RECOMMENDED APPLICATIONS

Application	Tectite Classic
Commercial mechanical services	
Chilled	-
Potable	✓
Heating	✓
Hot water services	✓
Food	-
Brewery	-
Gas	-
Domestic	
Potable	✓
Heating	✓
Gas	-
Hot water services	✓
Cold water services	✓

* Brass adaptors not suitable for chilled water.

† Closed loop.

MATERIALS SPECIFICATION

Component	Tectite
Body	DZR brass
'O' ring	EPDM*
Alignment ring	Glass filled Nylon 6
Cartridge/ Demounting ring	Acetal copolymer
Grab ring	Stainless steel
35-54mm End Cap	-
Shim	-

BNB. The 'O' ring in all Tectite fittings is manufactured from Ethylene Propylene Diene Monomer (EPDM) and is supplied lubricated for easy tube insertion.

* Ethylene Propylene Diene Monomer.

¹ Threaded fittings are DZR brass.



TECHNICAL DATA

WATER PIPE PROPERTIES

CONNECT + CONTROL

- Pex A, PN 20 rated
- Highest flexibility pipe, minimum 82% cross-linking
- Durable at high temperatures High tolerance to wear and corrosion
- Certified as compliant to relevant AS2492-1994 by Approval Mark International
- Watermark WM 022657



Black Pipe

(Pex-A)



Size	Specification	Code
16mm x 5m	PN20	PEX16B5
20mm x 5m	PN20	PEX20B5
16mm x 50m	PN20	PEX16B50
20mm x 50m	PN20	PEX20B50

Red Pipe

(Pex-A)



Size	Specification	Code
16mm x 5m	PN20	PEX16R5
20mm x 5m	PN20	PEX20R5
16mm x 50m	PN20	PEX16R50
20mm x 50m	PN20	PEX20R50

Tectite

HYDROFLOW

DISTRIBUTORS (AUST) PTY LTD

24 Harcourt Road
Altona
VICTORIA 3018

T: 1300 493 359
F: 03 83607666

Follow us on



Email: sales@hydroflowaus.com.au

www.hydroflowaus.com.au

