

# PlumbQwik<sup>™</sup>

by Fernco

- Creates a watertight seal between two plain ended pipes
- Designed for waste and grey water applications
- Connect what would normally be incompatible pipe systems
- Large range of straight and adaptor variations
- Extremely easy to fit using a nut driver or screw driver
- Remove and re-fit as required
- WaterMark certified
- OceanaMark certified



PlumbQwik<sup>™</sup> is a range of plumbing couplings by Fernco for above ground drainage applications, commonly found under kitchen sinks, shower trays, baths, behind washing machines etc.

Unlike many other plumbing couplings on the market, PlumbQwik's can connect any material pipe, provided it fits within the products size range. Made from flexible phthalate free PVC, the couplings can also adapt to imperfect

pipe alignment, making them ideal for repair scenarios and rectifying previous bad workmanship. The product range covers all common pipe sizes as straight or adaptor (also known as reducer) applications.



Straight PlumbQwik<sup>™</sup>



Adaptor PlumbQwik<sup>™</sup>



Elbow PlumbQwik<sup>™</sup>



Tee PlumbQwik<sup>™</sup>



End Cap PlumbQwik<sup>™</sup>



plus  
more

Fit horizontally or vertically

Strong stainless steel clamp bands

High quality PVC coupling body



Product Code	PQXXX
Description	PlumbQwik Coupling
Size Range	21-462mm
Material	PVC 1.4401 (316) Stainless Steel
Temperature Range	-34°C to 40°C constant, 60°C intermittent
Pressure Rating	0.5bar, 7.25psi
Standards	AS/NZS 4327-1995



### Straight PlumbQwik™ Range



### Double Clamped PQDXXX

Product Code	Reference	Size Range (mm)	Clamping Mechanism	Tightening Torque	Maximum difference between pipes OD's (mm)
PQ028	1056-075A	21-29	Single Clamp	6Nm	8
PQ038	1056-32MA	30-39	Single Clamp	6Nm	9
PQ046	1056-40MA	36-45	Single Clamp	6Nm	9
PQ057	1056-50MA	47-56	Single Clamp	6Nm	9
PQD057	1056-50MDB	47-56	Double Clamp	6Nm	9
PQ070	1056-65MA	61-70	Single Clamp	6Nm	9
PQ084	1056-80MA	75-84	Single Clamp	6Nm	9
PQ091	1056-90MA	81-92	Single Clamp	6Nm	10
PQD091	1056-90MDB	81-92	Double Clamp	6Nm	10
PQ113	1056-100MA	100-113	Single Clamp	6Nm	10
PQD113	1056-100MDB	100-113	Double Clamp	6Nm	10
PQ122	1055-44A	110-123	Single Clamp	6Nm	10
PQ130	-	118-131	Single Clamp	6Nm	10
PQ142	1004-44A	136-142	Single Clamp	6Nm	10
PQ162	1056-150MA	150-163	Single Clamp	6Nm	10
PQD162	1056-150MDB	150-163	Double Clamp	6Nm	10
PQ176	1055-66A	165-176	Single Clamp	6Nm	10
PQ188	1001-66A	180-188	Single Clamp	6Nm	10
PQ194	1004-66A	183-194	Single Clamp	6Nm	10
PQ219	1056-88A	206-219	Single Clamp	6Nm	10
PQ256	1056-225MA	240-256	Single Clamp	6Nm	10
PQD256	1056-225MDB	240-256	Double Clamp	6Nm	10
PQ260	1004-88A	250-260	Single Clamp	6Nm	10
PQ269	1056-1010A	254-269	Single Clamp	6Nm	10
PQ282	1055-1010A	265-282	Single Clamp	6Nm	10
PQ323	1004-1010A	299-317	Single Clamp	6Nm	10
PQ365	1001-1212A	340-365	Single Clamp	6Nm	10
PQ388	1056-1515A	366-388	Single Clamp	6Nm	10
PQ445	1001-1515A	415-445	Single Clamp	6Nm	10



### Expansion Joint PlumbQwik™ Range

Ideal for connecting vertical waste pipes which are subject to thermal expansion/contraction.

Product Code	Reference	Size Range (mm)	Clamping Mechanism	Tightening Torque	Maximum difference between pipes OD's (mm)	Maximum Expansion (mm)	Maximum Contraction (mm)
PQX061	XJ-2A	56-62	Single Clamp	6Nm	6	38	12
PQX092	XJ-3A	82-88	Single Clamp	6Nm	6	38	12
PQX114	XJ-4A	108-114	Single Clamp	6Nm	6	38	12



## Adaptor PlumbQwik™ Range

Double Clamped  
PQDXXX-XXX



Product Code	Reference	Size Range A (mm)	Size Range B (mm)	Clamping Mechanism	Tightening Torque
PQ045-036	1056-40 / 32MA	36-45	29-37	Single Clamp	6Nm
PQ058-038	DTC-215A	50-59	30-39	Single Clamp	6Nm
PQ058-045	1056-50/40MA	50-59	37-46	Single Clamp	6Nm
PQ085-058	1056-32A	75-86	50-59	Single Clamp	6Nm
PQ085-068	-	75-86	60-69	Single Clamp	6Nm
PQ090-063	-	78-89	53-62	Single Clamp	6Nm
PQ112-045	-	100-113	37-46	Single Clamp	6Nm
PQ112-085	1056-43A	100-113	75-86	Single Clamp	6Nm
PQ112-091	1056-100/90MA	100-113	81-92	Single Clamp	6Nm
PQ113-059	1056-42A	102-114	56-62	Single Clamp	6Nm
PQ122-112	1051-44A	110-123	100-113	Single Clamp	6Nm
PQ130-122	-	118-131	110-123	Single Clamp	6Nm
PQ135-115	-	122-135	102-115	Single Clamp	6Nm
PQ140-087	1006-43A	127-142	80-92	Single Clamp	6Nm
PQ144-112	1006-100MA	130-143	100-113	Single Clamp	6Nm
PQD144-112	1006-100MDB	130-143	100-113	Double Clamp	6Nm
PQ163-111	1056-64A	160-171	104-116	Single Clamp	6Nm
PQ178-108	1051-64A	164-178	101-112	Single Clamp	6Nm
PQ174-162	1051-66A	164-178	149-164	Single Clamp	6Nm
PQ190-162	1002-66A	177-190	152-162	Single Clamp	6Nm
PQ199-111	1006-64A	187-199	101-111	Single Clamp	6Nm
PQ200-162	1006-150MA	185-198	150-163	Single Clamp	6Nm
PQD200-162	1006-150MDB	185-198	150-163	Double Clamp	6Nm
PQ232-216	1051-88A	216-232	203-216	Single Clamp	6Nm
PQ260-198	1004-86A	250-260	188-198	Single Clamp	6Nm
PQ282-256	1006-225MA	268-284	241-257	Single Clamp	6Nm
PQD282-256	1006-225MDB	268-284	241-257	Double Clamp	6Nm
PQ320-269	1006-1010A	298-320	259-269	Single Clamp	6Nm
PQ368-320	1002-1212A	339-368	301-320	Single Clamp	6Nm
PQ417-318	1006-1212	417-400	318-302	Single Clamp	6Nm
PQ466-400	1002-1515A	440-452	370-383	Single Clamp	6Nm



PQHG-1



PQDC023-016

## Washer Connector PlumbQwik™ Range

Product Code	Reference	Description	Size Range A (mm)	Size Range B (mm)	Clamping Mechanism	Tightening Torque
PQHG-1	HG-1A	Hose Grip Clothes Washer Connector	38-50 (drain pipe)	25-36 (washer hose)	Single Clamp	6Nm
PQDC023-016	DWC100A	Dishwasher Drain Connector	19-23	13-16	Single Clamp	6Nm



## Elbow PlumbQwik™ Range

Product Code	Reference	Size Range (mm)	Clamping Mechanism	Tightening Torque	Maximum difference between pipes OD's (mm)
PQE038	-	30-38	Single Clamp	6Nm	8
PQE048	QL-150A	41-48	Single Clamp	6Nm	7
PQE060	QL-200A	54-62	Single Clamp	6Nm	8
PQE085	QL-300A	80-89	Single Clamp	6Nm	9
PQE112	QL-400A	105-116	Single Clamp	6Nm	10



## Tee PlumbQwik™ Range

Product Code	Reference	Size Range (mm)	Clamping Mechanism	Tightening Torque	Maximum difference between pipes OD's (mm)
PQT038	-	30-38	Single Clamp	6Nm	8
PQT048	QT-150A	41-48	Single Clamp	6Nm	7
PQT060	QT-200A	54-62	Single Clamp	6Nm	8
PQT085	QT-300A	80-89	Single Clamp	6Nm	9
PQT112	QT-400A	105-116	Single Clamp	6Nm	10



## End Cap PlumbQwik™ Range

Product Code	Reference	Size Range (mm)	Clamping Mechanism	Tightening Torque
PQC049	QC-101A	38-49	Single Clamp	6Nm
PQC061	QC-102A	50-61	Single Clamp	6Nm
PQC078	070CA	67-78	Single Clamp	6Nm
PQC091	QC-103A	80-91	Single Clamp	6Nm
PQC100	3CIA	88-100	Single Clamp	6Nm
PQC116	QC-104A	105-116	Single Clamp	6Nm
PQC143	QC-105A	132-143	Single Clamp	6Nm
PQC167	QC-106A	156-167	Single Clamp	6Nm
PQC220	QC-108A	204-220	Single Clamp	6Nm
PQC279	QC-110A	250-279	Single Clamp	6Nm

# Installation



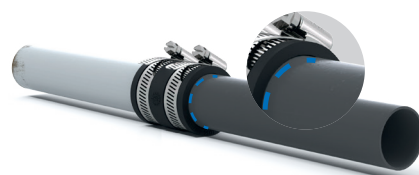
1. Mark both pipes, from the end to be connected, half the width of the coupling, less the required joint gap, which is usually 10mm.



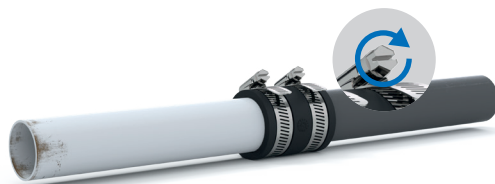
2. Slide the coupling fully over one of the pipes.



3. Align the pipes and slide the coupling onto the other pipe, ensuring the coupling face and marked line are flush. Tighten this clamp band.



4. Position the remaining pipe, ensuring the coupling face and marked line are flush. Tighten this clamp band.



5. Tighten the clamp bands to the recommended torque.

Note: The above instructions outline the method of connecting two pipes of the same diameter using a Straight PlumbQwik. This method can also be followed to make connections using other couplings in the PlumbQwik range.

# General Information

## Quality, Standards and Approvals

Certified by the British Standards Institution (BSI) as a company of assessed capability, with a quality management system which meets the requirements of BS EN ISO 9001:2015

Fernco are the leaders in wastewater connection innovation; utilising the most advanced methods and techniques for precision-manufactured products, all of which comply with or exceed relevant British and European standards to ensure reliability and sustainability.

PlumbQwik Straights, Adaptors and End Caps hold WaterMark and OceanaMark approved status:

**AS/NZS 4327-1995  
relevant products:**



Type A Straight Couplings PQ028 – PQ445  
Type A Adaptor Couplings PQ045-036 – PQ466-400

Full schedule available upon request.

## Environment

Operating Environmental Management Systems which are certified to ISO 14001: 2004.

## Supply

All Fernco products are supplied through a national and global network of distribution and merchant partners. For stockist details, contact Fernco.

## Technical Support

Fernco have a team of product experts on hand to support all customers with technical support and advice.

Contact Flexseal Technical Department:

Tel: +61 (0) 2 9450 0766

Email: [technical@fernco.com.au](mailto:technical@fernco.com.au)

## Enquiries

Sales:

Tel: +61 (0) 2 9450 0766

Email: [sales@fernco.com.au](mailto:sales@fernco.com.au)