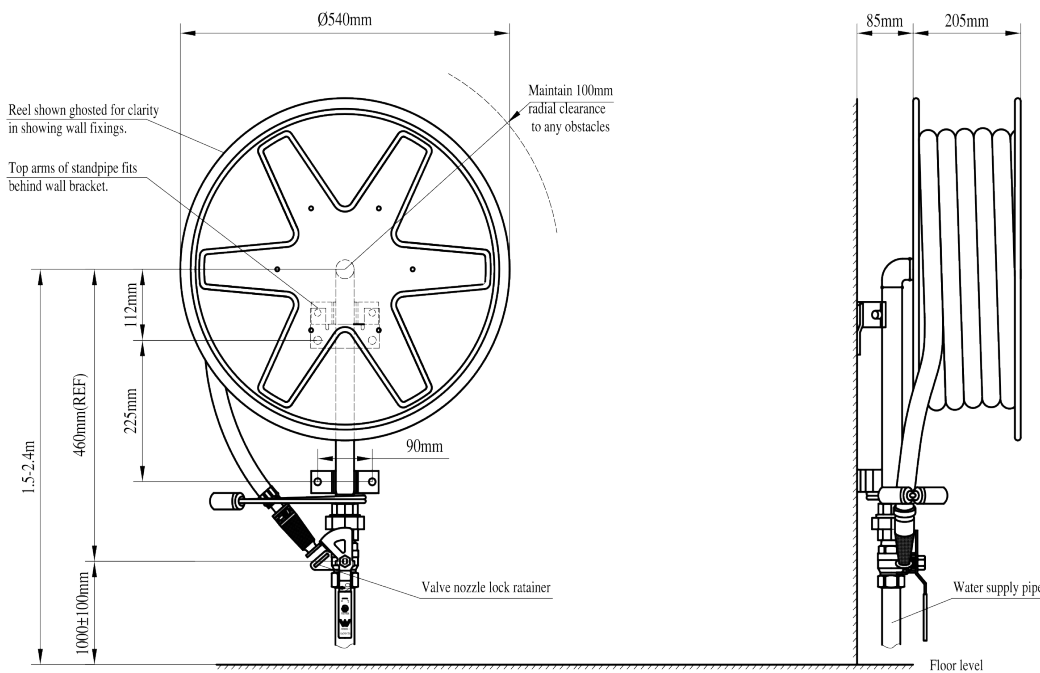


Standard Fixed Hose Reel

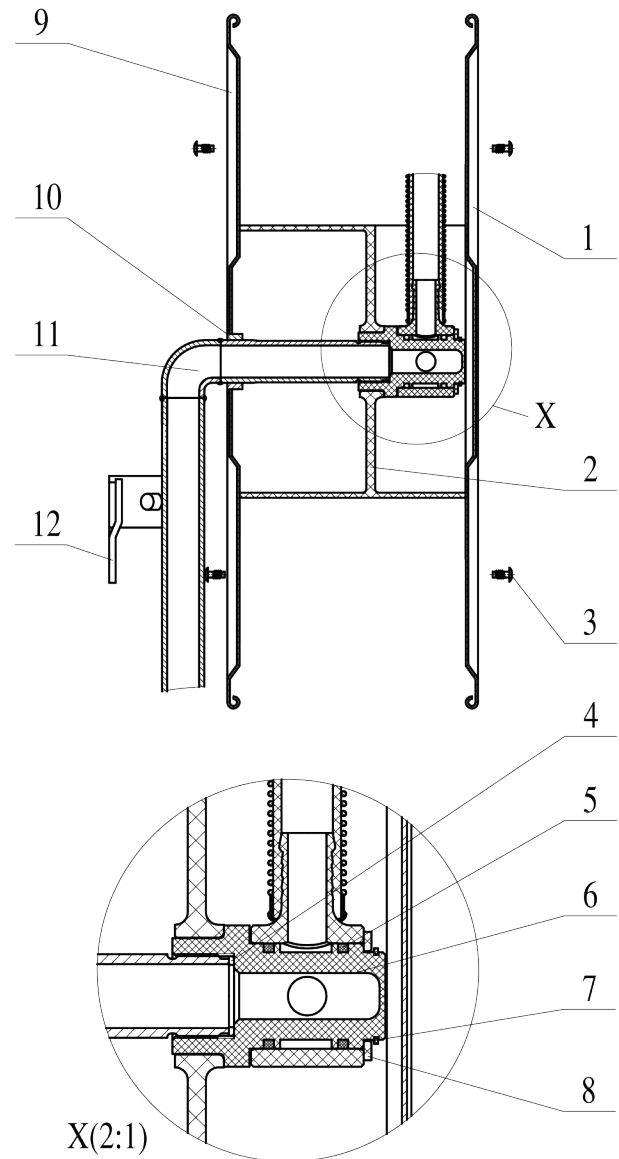
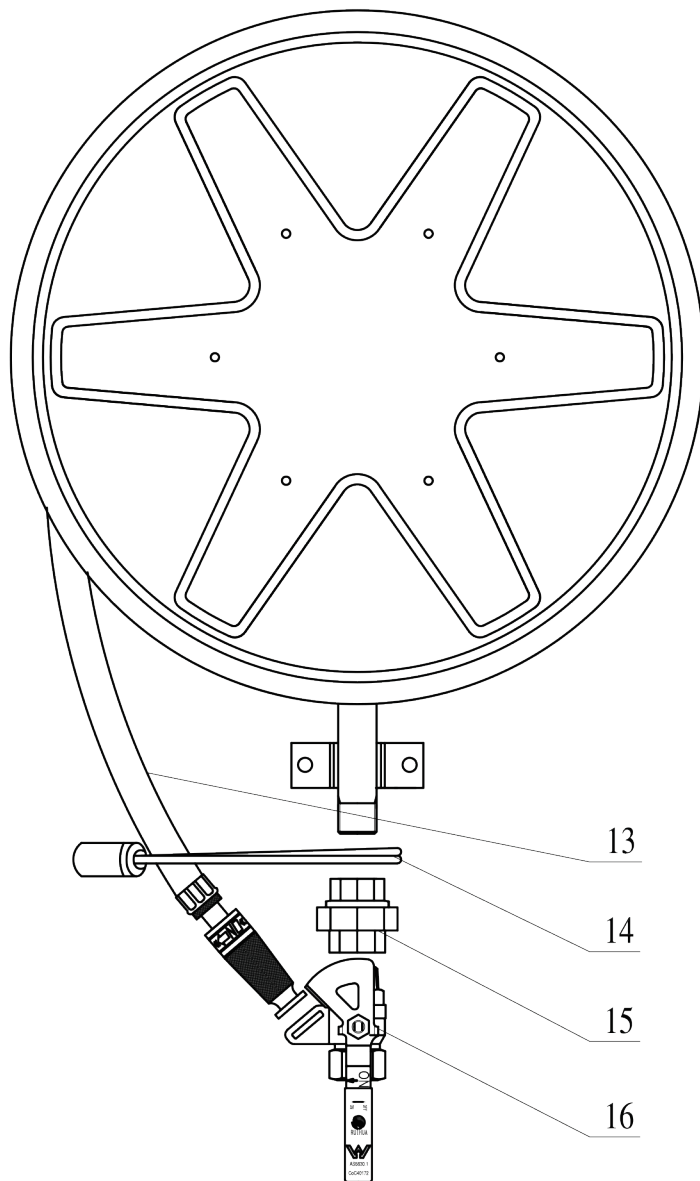
Model HS3626-540

- One-year warranty from date of delivery
- Economically priced
- Simple operation and maintenance
- Meets or exceeds requirements of Australian Standard AS 1221



Item	Description	Item	Description
Model Number	HS3626-540	Support Assembly	Mild Steel, Galvanised
Part Number	FHR3619	Hoseguide Assembly	Mild Steel, Zinc Plated
Standard Hose length and Dia	36m x 19mm Dia	Union	Malleable Iron/Galvanised
Approvals	AS/NZS 1221	Ball Valve Assembly	Brass/Mild Steel Handles
Minimum Inlet Pressure	220kPa	Nozzle Assembly	Brass
Maximum Working Pressure	1.0mPa	Drum	Polypropylene Copolymer
Side Plates	Steel Sheet Shoving Enamel Red	Hose Spring	Galvanised Spring Steel
Gland	Acetal Copolymer	Tailpiece	Acetal Copolymer
Spindle	Mild Steel	Circlip	Stainless Steel
Bearing	Acetal Copolymer	Inlet Pivot Pipe	Galvanised Mild Steel Pipe
Elbow	Malleable Iron Galvanised	WallBracket	Mild Steel

Standard Fixed Hose Reel



NO.	Part No.	Description	NO.	Part No.	Description
1	RH301917-2	Side Plate Outer	11	RH301917-3	Support Assembly
2	RH301917-9	Drum	12	RH301917-4	Wall Bracket
3	RH301917-10	Screw	13	RH300447	Hose Assembly
4	RH301917-12	Gland Seal Washer	14	RH301917-5	Hose Guide Assembly
5	RH301917-II	Gland Seal Quad Rings	15	/	Union
6	RH301917-7	Gland Inner	16	RH500105T	Ball Valve Assembly
7	GB/T894.2-1986	Circlip			
8	RH301917-8	Retaining Washer			
9	RH301917-1	Side Plate Inner			
10	RH301917-6	Bearing			