

SECTION 12

Code	Description	Size
GREY PLUMBQWIK COUPLINGS		
F1056-32M	32mm PVC - PVC-Cu-Gal-CI	38 x 38mm
F1056-40M	40mm PVC - PVC-Cu-Gal-CI	45 x 45mm
F1056-50M	50mm PVC - PVC-Cu-Gal-CI	55 x 55mm
F1056-65M	65mm PVC - PVC-Cu-Gal-CI	70 x 70mm
F1056-80M	80mm PVC - PVC-Cu-Gal-CI	85 x 85mm
F1056-90M	90mm PVC - PVC-Cu-Gal-CI	91 x 91mm
F1056-100M	100mm PVC - PVC-Cu-Gal-CI	112 x 112mm
F1056-150M	150mm PVC - PVC-Cu-Gal-CI	162 x 162mm
F1056-225M	225mm PVC - PVC-Cu-Gal-CI	252 x 252 mm
F1006-100M	100mm EW - PVC-Cu-Gal-CI	142 x 111mm
F1006-150M	150mm EW - PVC-Cu-Gal-CI	198 x 162mm
F1006-225M	225mm EW - 225mm PVC-Cu-Gal-CI	290 x 252mm
F1056-40/32M	40mm PVC - 32mm PVC-Cu-Gal-CI	36-29 x 45-37mm
F1056-50/40M	50mm PVC - 40mm PVC-Cu-Gal-CI	45-37 x 58-50mm


PLUMBQWIK REDUCER COUPLING

FDWC-100	PlumbQwik Reducer Coupling 20mm PVC - 15mm PVC	16 x 23mm
FDTC-150	PlumbQwik Reducer Coupling 40mm PVC - 32mm PVC	37 x 50mm
FDTC-215	PlumbQwik Reducer Coupling 50mm PVC - 32mm PVC	37 x 60mm


STANDARD PLUMBQWIK COUPLINGS

F1056-075A	20mm Condensor Pipe	26 x 26mm
F1056-100A	25mm Condensor Pipe	33 x 33mm
F1056-125A	32mm PVC - PVC-Cu-Gal-CI	41 x 41mm
F1060-22A	65mm PVC - PVC-Cu-Gal-CI	70 x 70mm
F1056-33A	80mm PVC - PVC-Cu-Gal-CI	89 x 89mm
F1004-88A	225mm PVC - PVC-Cu-Gal-CI	264 x 264mm
F1004-1010A	300mm PVC - PVC-Cu-Gal-CI	323 x 323mm
F1056-1515A	375mm PVC - PVC-Cu-Gal-CI	391 x 391mm
F1002-1212A	300mm EW - 300mm PVC-Cu-Gal-CI	368 x 318mm
F1002-1515A	375mm EW - 375mm PVC-Cu-Gal-CI	452 x 383mm



SECTION 12

PLUMBING SUPPLIES

HYDROFLOW
DISTRIBUTORS (AUST) PTY LTD

HYDROFLOW
DISTRIBUTORS (AUST) PTY LTD

Code Description Size

SECTION 12

PLUMBQWIK REDUCER SERIES COUPLINGS

F1056-215A	50mm - 40mm PVC	60 x 48mm
F1056-32A	80mm - 50mm PVC	85 x 60mm
F1056-42A	100mm - 50mm PVC	111 x 60mm
F1056-43A	100mm - 80mm PVC	111 x 85mm
F1056-64A	150mm - 100mm PVC	162 x 111mm
F1051-1010A	225mm - 225mm PVC	278 x 268mm
F1006-1212A	375mm - 300mm PVC	416 x 318mm
F1006-43A	100mm EW - 80mm PVC	142 x 85mm
F1006-64A	150mm EW - 100mm PVC	198 x 111mm
F1004-86A	250mm - 150mm EW - EW	260 x 198mm



EW/CONCRETE STRAIGHT PLUMQWIK COUPLINGS

F1004-44A	100mm EW - EW	142 x 142mm
F1004-66A	150mm EW - EW	193 x 193mm
F1055-1010A	225mm EW - EW	282 x 282mm
F1001-1212A	300mm EW - EW	365 x 365mm
F1001-1515A	375mm EW - EW	453 x 453mm



AC/FRC TO PVC PLUMQWIK COUPLINGS

F1051-44A	100mm AC/ CI/ FRC - 100mm PVC	120 x 111mm
F1051-64A	100mm AC/CI/Super Sleeve-150mm PVC	177 x 111mm
F1051-66A	150mm AC/CI/Super Sleeve-150mm PVC	177 x 162mm
F1002-66A	150mm FRC/Super Sleeve - 150mm PVC	187 x 162mm
F1051-86A	150mm AC/Super Sleeve - 200mm AC	232 x 157mm
F1051-88A	200mm - 200mm ASB - PVC	232 x 216mm
F1006-1010A	225mm AC, FRC Class 1 - 300mm PVC	320 x 269mm
F1055-44A	100mm AC - 100mm AC	121 x 121mm
F1001-66A	150mm FRC class1 - 150mm FRC class1	191 x 191mm
F1055-66A	150mm Super Sleeve - 150mm Super Sleeve	180 x 180mm
F1056-1010A	225mm FRC - 225 FRC class1 - 225 Super Sleeve	269 x 269mm



QWIK CAP END CAPS

FQC-101	40mm PVC-Cu-GAL-CL	48mm
FQC-102	50mm PVC-Cu-GAL-CL	61mm
FQC-103	80mm PVC-Cu-GAL-CL	89mm
FQC-104	100mm PVC-Cu-GAL-CL	115mm
FQC-105	125mm PVC-Cu-GAL-CL	143mm
FQC-106	150mm PVC-Cu-GAL-CL	159mm
FQC-108	200mm PVC-Cu-GAL-CL	217mm
FQC-110	250mm PVC-Cu-GAL-CL	266mm



Code	Description	Size
ELBOWS AND JUNCTION PLUMBQWIK COUPLINGS		
FQL-150G	40mm X 90deg PVC - PVC-Cu-Gal-CI (GREY)	48 x 48mm
FQL-200	50mm X 90deg PVC - PVC-Cu-Gal-CI (BLACK)	59 x 59mm
FQL-200G	50mm X 90deg PVC - PVC-Cu-Gal-CI (GREY)	59 x 59mm
FQL-400	100mm X 90deg PVC - PVC-Cu-Gal-CI (BLACK)	113 x 113mm
FQT-150G	40mm X 90deg PVC - PVC-Cu-Gal-CI (GREY)	48 x 48 x 48mm
FQT-200	50mm X 90deg PVC - PVC-Cu-Gal-CI (BLACK)	59 x 59 x 59mm
FQT-200G	50mm X 90deg PVC - PVC-Cu-Gal-CI (GREY)	59 x 59 x 59mm
FQT-400	100mm X 90deg PVC - PVC-Cu-Gal-CI (BLACK)	115 x 115 x 115mm



SECTION 12

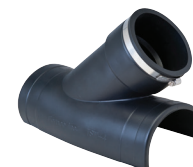
VERTICAL EXPANSION JOINTS

FXJ-2	50mm (pipe size) PVC - PVC-Cu-Gal-CI	57mm PVC
FXJ-4	100mm (pipe size) PVC - PVC-Cu-Gal-CI	112mm PVC



FLEXIBLE BOSS JUNCTIONS

FTSW-4	Flexible Boss S/W 150 / 225 / 300 100mm 45DEG
FTSW-6	Flexible Boss S/W 225 / 300 / 375 150mm 45DEG
FTST-4	Flexible Boss S/W 150 / 225 / 300 100mm 90DEG
FTST-6	Flexible Boss S/W 225 / 300 / 375 150mm 90DEG
FTSPK-46	Flexible Boss Pressure Saddle Kit



HOSE CLAMPS 316 STAINLESS STEEL

F032-316	40mm - 63mm
F044-316	59mm - 82mm
F064-316	67mm - 114mm
F080-316	92mm - 140mm
F096-316	114mm - 165mm
F104-316	127mm - 178mm
F116-316	146mm - 197mm
F128-316	165mm - 216mm
F140-316	178mm - 235mm
F152-316	203mm - 254mm
F164-316	222mm - 273mm
F184-316	254mm - 305mm
F212-316	249mm - 298mm
F248-316	356mm - 406mm



Code Description Size

SECTION 12

ACCESSORIES

FHG-1 Plumbqwik Hose Grip 50mm
FTW-100 Torque Wrench



QWIKSEAL COMPRESSION SEAL

FQS-4 100mm PVC x 225 / 300 / 375mm
FQS-6 150mm PVC x 300 / 375 / 425mm



POW-R WRAP PIPE REPAIR

FPW248CS	25mm Pipe Repair	50 x 1200mm
FPW3132CS	32-75mm Pipe Repair	75 x 3300mm
FPW4252CS	80-150mm Pipe Repair	100 x 6400mm



Code Description Size

Gas Stump - Gas Sleeve Support

- Eliminates the need for mechanical joints in the cavity.
- Provides UV protection for PEX pipe and for fire zone areas.
- Available to suit both 25mm and 32mm PEX pipe.
- Suitable for all fire zone areas
- Allows the use of PEX gas system right through to the meter (no copper or gal pipe required)
- Creates a strong base, strengthening and stabilising the meter.
- Quick installation
- Supports gas safety regulations in relation to mechanical joints in the wall
- Currently only suited for PEX crimped gas pipe systems
- Certified up to BAL 40

GASSTUMP25
GASSTUMP32

25mm
32mm

