

Product	Page(s)
Section 1	
Victaulic Firelock.....	1-5
Victaulic Mechanical.....	5 – 23
Victaulic Copper System	24-26
Roll Groove Copper Adaptors	26
Victaulic S/S System.....	27-29
Mech Gal Mal.....	30-36
Buttweld Fittings.....	37-47
Black Steel Flanges.....	48-49
Copamate Flanges	50
Gaskets.....	51
Fire Overhaul Kits	52
Fasteners	53
Pipe	53-69
Flex and Hard Droppers.....	70-71
Fabrication Services	71
Fire Valves UL/FM.....	72-74
Sprinkler Valve Accessories	74
Deluge Valves UL/FM.....	75
HVAC Lug/Wafer Valves.....	75-77
Balancing Valves	77-78
Expansion Joints	78-79
Section 2	
Screwed Valves and Strainers.....	80-82
Solenoid Valves and Air Vents.....	83
Gauges.....	84-85
Erico Hangers.....	83-92
Hydrant assemblies and parts.....	93-96
Boosters and assemblies	96-99
Stortz Suction & Adaptors.....	99-102
Brigade Adaptors	102-105
Stortz Couplings	105-107
Fire Fighting Hoses (lay flat).....	107-109
Section 3	
Brigade Wye Dividers	110
Hose Reels and Accessories.....	111
Fire Extinguishers.....	111-112
Fire Blankets.....	112
Fire Cabinets all styles	112
Fire Sprinklers and Accessories.....	113-120
Fire Electrical Switches	120-121
General Supplies	121
Tools and Accessories	122-123

SECTION 11

FIRE & HVAC

Code **Description** **Size**

VICTAULIC ROLL GROOVE COUPLINGS AND FITTINGS

VICTAULIC FIRELOCK FITTINGS & TAPPING BANDS

NO. 005 FIRELOCK RIGID COUPLINGS

FireLock® Style 005H rigid coupling has a unique, patented angled bolt pad design which allows the housings to offset while clamping the grooves. By permitting the housings to slide on the angled bolt pads, rigidity is obtained. Support and hanging requirements correspond to NFPA 13 Sprinkler Systems. The angled bolt pad design permits assembly by removing one nut/bolt and swinging the housing over the gasket. This reduces components to handle during assembly. These FireLock couplings are designed and recommended for use only on fire protection systems

Painted

V005-FLC32	32mm (42.4)
V005-FLC40	40mm (48.3)
V005-FLC50	50mm (60.3)
V005-FLC65A	65mm (76.1)
V005-FLC80	80mm (88.9)
V005-FLC100	100mm (114.3)
V005-FLC150A	150mm (165.1)
V005-FLC200	200mm (219.1)



Galvanised

V005-GFLC32	32mm (42.4)
V005-GFLC40	40mm (48.3)
V005-GFLC50	50mm (60.3)
V005-GFLC65A	65mm (76.1)
V005-GFLC80	80mm (88.9)
V005-GFLC100	100mm (114.3)
V005-GFLC150A	150mm (165.1)
V005-GFLC200	200mm (219.1)

NO. 009 FIRELOCK QUICK-VIC COUPLINGS

Installation-Ready rigid coupling for fire protection systems. The coupling's unique design eliminates loose parts, promotes consistent installation and provides substantial gains in productivity.

Painted

V009-QC32	32mm (42.4)
V009-QC40	40mm (48.3)
V009-QC50	50mm (60.3)
V009-QC65A	65mm (76.1)
V009-QC80	80mm (88.9)
V009-QC100	100mm (114.3)
V009-QC150A	150mm (165.1)
V009-QC200	200mm (219.1)



Galvanised

V009-GQC32	32mm (42.4)
V009-GQC40	40mm (48.3)

SECTION 11

FIRE & HVAC

SECTION 8

Code	Description	Size
V009-GQC50		50mm (60.3)
V009-GQC65A		65mm (76.1)
V009-GQC80		80mm (88.9)
V009-GQC100		100mm (114.3)
V009-GQC150A		150mm (165.1)
V009-GQC200		200mm (219.1)

NO. 75 FLEXIBLE COUPLINGS

Flexible coupling for use where moderate pressures are expected and weight considerations are a factor.

Painted

V075-FC25		25mm (33.7)
V075-FC32		32mm (42.4)
V075-FC40		40mm (48.3)
V075-FC50		50mm (60.3)
V075-FC65A		65mm (76.1)
V075-FC80		80mm (88.9)
V075-FC100		100mm (114.3)
V075-FC150A		150mm (165.1)
V075-FC200		200mm (219.1)



Galvanised

V075-GFC25		25mm (33.7)
V075-GFC32		32mm (42.4)
V075-GFC40		40mm (48.3)
V075-GFC50		50mm (60.3)
V075-GFC65A		65mm (76.1)
V075-GFC80		80mm (88.9)
V075-GFC100		100mm (114.3)
V075-GFC150A		150mm (165.1)
V075-GFC200		200mm (219.1)

FITTINGS

NO. 001 ELBOWS 90 DEG S/R

Designed specifically for fire protection systems, features shorter center-to-end dimensions than standard fittings while allowing similar flow characteristics to standard full flow fittings.

Painted

VN001-E50		50mm (60.3)
VN001-E65A		65mm (76.1)
VN001-E80		80mm (88.9)
VN001-E100		100mm (114.3)
VN001-E150A		150mm (165.1)
VN001-E200		200mm (219.1)



SECTION 11

FIRE & HVAC

Code	Description	Size
Galvanised		
VN001-E50G		50mm (60.3)
VN001-65AG		65mm (76.1)
VN001-E80G		80mm (88.9)
VN001-E100G		100mm (114.3)
VN001-E150AG		150mm (165.1)
VN001-E200G		200mm (219.1)

NO. 003 ELBOWS 45 DEG SHORT PATTERN S/R

FIRELOCK ELBOW - FIRE PROTECTION ONLY

Elbow/Tee Fittings are supplied with grooved or shouldered ends to permit fast installation without field preparation. Fittings conform to the pressure ratings of Style 77 flexible couplings.

Painted

VN003-E50		50mm (60.3)
VN003-E65A		65mm (76.1)
VN003-E80		80mm (88.9)
VN003-E100		100mm (114.3)
VN003-E150A		150mm (165.1)
VN003-E200		200mm (219.1)



Galvanised

VN003-E50G		50mm (60.3)
VN003-65AG		65mm (76.1)
VN003-E80G		80mm (88.9)
VN003-E100G		100mm (114.3)
VN003-E150AG		150mm (165.1)
VN003-E200G		200mm (219.1)

NO. 002 TEE SHORT PATTERN S/R

Painted

VN002-T50		50mm (60.3)
VN002-T65A		65mm (76.1)
VN002-T80		80mm (88.9)
VN002-T100		100mm (114.3)
VN002-T150A		150mm (165.1)
VN002-T200		200mm (219.1)



Galvanised

VN002-T50G		50mm (60.3)
VN002-T65AG		65mm (76.1)
VN002-T80G		80mm (88.9)
VN002-T100G		100mm (114.3)
VN002-T150AG		150mm (165.1)

SECTION 11 FIRE & HVAC

Code	Description	Size
VN002-T200G		200mm (219.1)

NO. 006 END CAP

Painted

VN006-50		50mm (60.3)
VN006-65A		65mm (76.1)
VN006-80		80mm (88.9)
VN006-100		100mm (114.3)
VN006-150A		150mm (165.1)
VN006-200		200mm (219.1)

Galvanised

VN006-50G		50mm (60.3)
VN006-65AG		65mm (76.1)
VN006-80G		80mm (88.9)
VN006-100G		100mm (114.3)
VN006-150AG		150mm (165.1)
VN006-200G		200mm (219.1)

MECHANICAL OUTLETS / TAPPING BANDS

NO. 922 SPRINKLER OUTLET

Sprinkler Outlet Mid-pipe outlet designed specifically for fire protection services. Not approved for cross configurations
Outlet-T x F/Thd

VN922-32X25		32mm (42.4) x 25mm F/Thd
VN922-40X25		40mm (48.3) x 25mm F/Thd
VN922-50X25		50mm (60.3) x 25mm F/Thd



NO. 920 MECHANICAL TEE - THREADED FEMALE OUTLET

BSP OUTLET STYLE 920

Provides a direct branch connection at any pipe location where a hole can be cut. A "holefinder" locating collar secures the outlet permanently into position. A pressure responsive gasket seals on the pipe OD - Galvanised

VN920F-50X25		50 x 25mm F/Thd
VN920F-50X32		50 x 32mm F/Thd
VN920F-50X40		50 x 40mm F/Thd
VN920F-65AX25		65 (76.1) x 25mm F/Thd
VN920F-65AX32		65 (76.1) x 32mm F/Thd
VN920F-65AX40		65 (76.1) x 40mm F/Thd
VN920F-80X25		80 x 25mm F/Thd
VN920F-80X32		80 x 32mm F/Thd
VN920F-80X40		80 x 40mm F/Thd
VN920F-80X50		80 x 50mm F/Thd
VN920F-100X25		100 x 25mm F/Thd
VN920F-100X32		100 x 32mm F/Thd

Code	Description	Size
VN920F-100X40		100 x 40mm F/Thd
VN920F-100X50		100 x 50mm F/Thd
VN920F-100X65		100 x 65mm F/Thd
VN920F-100X80		100 x 80mm F/Thd
VN920F-150AX40		150 (165.1) x 40mm F/Thd
VN920F-150AX50		150 (165.1) x 50mm F/Thd
VN920F-150AX65		150 (165.1) x 65mm F/Thd
VN920F-150AX80		150 (165.1) x 80mm F/Thd
VN920F-150AX100		150 (165.1) x 100mm F/Thd
VN920F-200X50		200 x 100mm F/Thd
VN920F-200X65		200 x 50mm F/Thd
VN920F-200X80		200 x 65mm F/Thd
VN920F-200X100		200 x 80mm F/Thd

NO. 920 MECHANICAL TEE - GROOVED OUTLET

Provides a direct branch connection at any pipe location where a hole can be cut. A "holefinder" locating collar secures the outlet permanently into position. A pressure responsive gasket seals on the pipe OD

VN920R-80X50		80 x 50mm RG
VN920R-100X40		100 x 40mm RG
VN920R-100X50		100 x 50mm RG
VN920R-100X65A		100 x 65mm (76.1) RG
VN920R-100X80		100 x 40mm RG
VN920R-150AX50		150 (165.1) x 50mm RG
VN920R-150AX65A		150 (165.1) x 65mm (76.1) RG
VN920R-150AX80		150 (165.1) x 80mm RG
VN920R-150AX100		150 (165.1) x 100mm RG
VN920R-200X150A		200 x 150mm (165.1) RG
VN920R-200X100		200 x 100mm RG
VN920R-200X80		200 x 80mm RG



VICTAULIC MECHANICAL FITTINGS AND ACCESSORIES

MECHANICAL COUPLINGS

INSTALLATION READY COUPLING 107 RIGID

Painted

V107-QC50		50mm (60.3)
V107-QC65		65mm (73.0)
V107-QC80		80mm (88.9)
V107-QC100		100mm (114.3)
V107-QC125		125mm (141.3)
V107-QC150		150mm (168.3)
V107-QC200		200mm (219.1)
V107-QC250		250mm (273.0)
V107-QC300		300mm (323.9)



Code	Description	Size
Galvanised		
V107-GQC50		50mm (60.3)
V107-GQC65		65mm (73.0)
V107-GQC80		80mm (88.9)
V107-GQC100		100mm (114.3)
V107-GQC125		125mm (141.3)
V107-GQC150		150mm (168.3)
V107-GQC200		200mm (219.1)
V107-GQC250		250mm (273.0)
V107-GQC300		300mm (323.9)

INSTALLATION READY COUPLING 177 FLEXIBLE

Painted		
V177-QC50		50mm (60.3)
V177-QC65		65mm (73.0)
V177-QC80		80mm (88.9)
V177-QC100		100mm (114.3)
V177-QC125		125mm (141.3)
V177-QC150		150mm (168.3)
V177-QC200		200mm (219.1)

Galvanised		
V177-GQC50		50mm (60.3)
V177-GQC65		65mm (73.0)
V177-GQC80		80mm (88.9)
V177-GQC100		100mm (114.3)
V177-GQC125		125mm (141.3)
V177-GQC150		150mm (168.3)
V177-GQC200		200mm (219.1)

07 RIGID COUPLING

Painted		
V007-ZC25		25mm (33.7)
V007-ZC32		32mm (42.4)
V007-ZC40		40mm (48.3)
V007-ZC50		50mm (60.3)
V007-ZC65		65mm (73.0)
V007-ZC80		80mm (88.9)
V007-ZC100		100mm (114.3)
V007-ZC125		125mm (141.3)
V007-ZC150		150mm (168.3)
V007-ZC200		200mm (219.1)
V007-ZC250		250mm (273.0)
V007-ZC300		300mm (323.9)



Code	Description	Size
Galvanised		
V007-GZC25		25mm (33.7)
V007-GZC32		32mm (42.4)
V007-GZC40		40mm (48.3)
V007-GZC50		50mm (60.3)
V007-GZC65		65mm (73.0)
V007-GZC80		80mm (88.9)
V007-GZC100		100mm (114.3)
V007-GZC125		125mm (141.3)
V007-GZC150		150mm (168.3)
V007-GZC200		200mm (219.1)
V007-GZC250		250mm (273.0)
V007-GZC300	C007/ 323 GLV E IMP	300mm (323.9)

W07 AGS RIGID COUPLING

Painted

VW07-ZC350		350mm (355.6)
VW07-ZC400		400mm (406.4)
VW07-ZC450		450mm (457.2)
VW07-ZC500		500mm (508.0)
VW07-ZC600		600mm (610.0)



Galvanised

VW07-GZC350		350mm (355.6)
VW07-GZC400		400mm (406.4)
VW07-GZC450		450mm (457.2)
VW07-GZC500		500mm (508.0)
VW07-GZC600		600mm (610.0)

77 FLEXIBLE COUPLING

Painted

V077-FC25		25mm (33.7)
V077-FC32		32mm (42.4)
V077-FC40		40mm (48.3)
V077-FC50		50mm (60.3)
V077-FC65		65mm (73.0)
V077-FC80		80mm (88.9)
V077-FC100		100mm (114.3)
V077-FC125		125mm (141.3)
V077-FC150		150mm (168.3)
V077-FC200		200mm (219.1)
V077-FC250		250mm (273.0)
V077-FC300		300mm (323.9)



SECTION 11

FIRE & HVAC

SECTION 11

Code	Description	Size
Galvanised		
V077-GFC25		25mm (33.7)
V077-GFC32		32mm (42.4)
V077-GFC40		40mm (48.3)
V077-GFC50		50mm (60.3)
V077-GFC65		65mm (73.0)
V077-GFC80		80mm (88.9)
V077-GFC100		100mm (114.3)
V077-GFC125		125mm (141.3)
V077-GFC150		150mm (168.3)
V077-GFC200		200mm (219.1)
V077-GFC250		250mm (273.0)
V077-GFC300		300mm (323.9)



W77 AGS FLEXIBLE COUPLING

Painted

VW77-FC350		350mm (355.6)
VW77-FC400		400mm (406.4)
VW77-FC450		450mm (457.2)
VW77-FC500		500mm (508.0)
VW77-FC600		600mm (610.0)



Galvanised

VW77-GFC350		350mm (355.6)
VW77-GFC400		400mm (406.4)
VW77-GFC450		450mm (457.2)
VW77-GFC500		500mm (508.0)
VW77-GFC600		600mm (610.0)

741 FLANGE ADAPTOR DIN PN16 FLANGE

V741-FA50		50mm (60.3)
V741-FA80		80mm (88.9)
V741-FA100		100mm (114.3)
V741-FA150		150mm (168.3)
V741-FA200		200mm (219.1)
V741-FA250		250mm (273.0)
V741-FA300		300mm (323.9)



V741-GFA50		50mm (60.3)
V741-GFA80		80mm (88.9)
V741-GFA100		100mm (114.3)
V741-GFA150		150mm (168.3)
V741-GFA200		200mm (219.1)
V741-GFA250		250mm (273.0)
V741-GFA300		300mm (323.9)



SECTION 11

FIRE & HVAC

Code	Description	Size
TABLE E FLANGE		
<i>Painted</i>		
V741-FA50-TE		50mm (60.3)
V741-FA80-TE		80mm (88.9)
V741-FA100-TE		100mm (114.3)
V741-FA150-TE		150mm (168.3)
V741-FA200-TE		200mm (219.1)
<i>Galvanised</i>		
V741-GFA50-TE		50mm (60.3)
V741-GFA80-TE		80mm (88.9)
V741-GFA100TE		100mm (114.3)
V741-GFA150-TE		150mm (168.3)
V741-GFA200-TE		200mm (219.1)
ANSI FLANGE		
<i>Painted</i>		
V741-FA50ANSI		50mm (60.3)
V741-FA65ANSI		65mm (73.0)
V741-FA80ANSI		80mm (88.9)
V741-FA100ANSI		100mm (114.3)
V741-FA125ANSI		125mm (141.3)
V741-FA150ANSI		150mm (168.3)
V741-FA200ANSI		200mm (219.1)
V741-FA250ANSI		250mm (273.0)
V741-FA300ANSI		300mm (323.9)
<i>Galvanised</i>		
V741-GFA50ANSI		50mm (60.3)
V741-GFA65ANSI		65mm (73.0)
V741-GFA80ANSI		80mm (88.9)
V741-GFA100ANSI		100mm (114.3)
V741-GFA125ANSi		125mm (141.3)
V741-GFA150ANSI		150mm (168.3)
V741-GFA200ANSI		200mm (219.1)
V741-GFA250ANSI		250mm (273.0)
V741-GFA300ANSI		300mm (323.9)
*SPECIAL ORDER		

SECTION 11

FIRE & HVAC

Code Description Size

MECHANICAL FITTINGS

#10 ELBOWS 90D

Painted

VN10-E25	25mm (33.7)
VN10-E32	32mm (42.4)
VN10-E40	40mm (48.3)
VN10-E50	50mm (60.3)
VN10-E65	65mm (73.0)
VN10-E80	80mm (88.9)
VN10-E100	100mm (114.3)
VN10-E125	125mm (141.3)
VN10-E150	150mm (168.3)
VN10-E200	200mm (219.1)
VN10-E250	250mm (273.0)
VN10-E300	300mm (323.9)



Galvanised

VN10-GE25	25mm (33.7)
VN10-GE32	32mm (42.4)
VN10-GE40	40mm (48.3)
VN10-GE50	50mm (60.3)
VN10-GE65	65mm (73.0)
VN10-GE80	80mm (88.9)
VN10-GE100	100mm (114.3)
VN10-GE125	125mm (141.3)
VN10-GE150	150mm (168.3)
VN10-GE200	200mm (219.1)
VN10-GE250	250mm (273.0)
VN10-GE300	300mm (323.9)



W10 AGS ELBOWS 90D

Painted

VN10-E350	350mm (355.6)
VN10-E400	400mm (406.4)
VN10-E450	450mm (457.2)
VN10-E500	500mm (508.0)
VN10-E600	600mm (610.0)

Galvanised

VN10-GE350	350mm (355.6)
VN10-GE400	400mm (406.4)
VN10-GE450	450mm (457.2)
VN10-GE500	500mm (508.0)
VN10-GE600	600mm (610.0)

Code	Description	Size
#11 ELBOWS 45D		
<i>Painted</i>		
VN11-E25		25mm (33.7)
VN11-E32		32mm (42.4)
VN11-E40		40mm (48.3)
VN11-E50		50mm (60.3)
VN11-E65		65mm (73.0)
VN11-E80		80mm (88.9)
VN11-E100		100mm (114.3)
VN11-E125		125mm (141.3)
VN11-E150		150mm (168.3)
VN11-E200		200mm (219.1)
VN11-E250		250mm (273.0)
VN11-E300		300mm (323.9)



<i>Galvanised</i>		
VN11-GE25		25mm (33.7)
VN11-GE32		32mm (42.4)
VN11-GE40		40mm (48.3)
VN11-GE50		50mm (60.3)
VN11-GE65		65mm (73.0)
VN11-GE80		80mm (88.9)
VN11-GE100		100mm (114.3)
VN11-GE125		125mm (141.3)
VN11-GE150		150mm (168.3)
VN11-GE200		200mm (219.1)
VN11-GE250		250mm (273.0)
VN11-GE300		300mm (323.9)



W11 AGS ELBOWS 45D		
<i>Painted</i>		
VN11-E350	FW11/ 355 ELL45 ORG AGS	350mm (355.6)
VN11-E400	FW11/ 406 ELL45 ORG AGS	400mm (406.4)
VN11-E450	FW11/ 457 ELL45 ORG AGS	450mm (457.2)
VN11-E500	FW11/ 508 ELL45 ORG AGS	500mm (508.0)
VN11-E600	FW11/ 610 ELL45 ORG AGS	600mm (610.0)



<i>Galvanised</i>		
VN11-GE350	FW11/ 355 ELL45 GLV AGS	350mm (355.6)
VN11-GE400	FW11/ 406 ELL45 GLV AGS	400mm (406.4)
VN11-GE450	FW11/ 457 ELL45 GLV AGS	450mm (457.2)
VN11-GE500	FW11/ 508 ELL45 GLV AGS	500mm (508.0)
VN11-GE600	FW11/ 610 ELL45 GLV AGS	600mm (610.0)

SECTION 11 FIRE & HVAC

Code	Description	Size
#100 LONG RADIUS ELBOWS 90D		
<i>Painted</i>		
VN100-LRE50	F100/ 060 LR ELL90 ORG	50mm (60.3)
VN100-LRE65	F100/073 LR ELL90 ORG	65mm (73.0)
VN100-LRE80	F100/ 089 LR ELL90 ORG	80mm (88.9)
VN100-LRE100	F100/ 114 LR ELL90 ORG	100mm (114.3)
VN100-LRE125	F100/141 LR ELL90 ORG	125mm (141.3)
VN100-LRE150	F100/ 168 LR ELL90 ORG	150mm (168.3)
VN100-LRE200	F100/ 219 LR ELL90 ORG	200mm (219.1)
VN100-LRE250	F100/ 273 LR ELL90 ORG	250mm (273.0)
VN100-LRE300	F100/ 323 LR ELL90 ORG	300mm (323.9)



Galvanised

VN100-GLRE50	F100/ 060 LR ELL90 GLV	50mm (60.3)
VN100-GLRE65	F100/ 073 LR ELL90 GLV	65mm (73.0)
VN100-GLRE80	F100/ 089 LR ELL90 GLV	80mm (88.9)
VN100-GLRE100	F100/ 114 LR ELL90 GLV	100mm (114.3)
VN100-GLRE125	F100/ 141 LR ELL90 GLV	125mm (141.3)
VN100-GLRE150	F100/ 168 LR ELL90 GLV	150mm (168.3)
VN100-GLRE200	F100/ 219 LR ELL90 GLV	200mm (219.1)
VN100-GLRE250	F100/ 273 LR ELL90 GLV	250mm (273.0)
VN100-GLRE300	F100/ 323 LR ELL90 GLV	300mm (323.9)

*SPECIAL ORDER

W100 AGS LONG RADIUS ELBOWS 90D

Painted

VN100-LRE350	350mm (355.6)
VN100-LRE400	400mm (406.4)
VN100-LRE450	450mm (457.2)
VN100-LRE500	500mm (508.0)
VN100-LRE600	600mm (610.0)



Galvanised

VN100-GLRE350	350mm (355.6)
VN100-GLRE400	400mm (406.4)
VN100-GLRE450	450mm (457.2)
VN100-GLRE500	500mm (508.0)
VN100-GLRE600	600mm (610.0)

*SPECIAL ORDER

SECTION 11

FIRE & HVAC

Code **Description** **Size**

#110 LONG RADIUS ELBOWS 45D

Painted

VN110-LRE50	50mm (60.3)
VN110-LRE65	65mm (73.0)
VN110-LRE80	80mm (88.9)
VN110-LRE100	100mm (114.3)
VN110-LRE125	125mm (141.3)
VN110-LRE150A	150mm (168.3)
VN110-LRE200	200mm (219.1)
VN110-LRE250	250mm (273.0)
VN110-LRE300	300mm (323.9)

***SPECIAL ORDER**

Galvanised

VN110-GLRE50	50mm (60.3)
VN110-GLRE65	65mm (73.0)
VN110-GLRE80	80mm (88.9)
VN110-GLRE100	100mm (114.3)
VN110-GLRE125	125mm (141.3)
VN110-GLRE150A	150mm (168.3)
VN110-GLRE200	200mm (219.1)
VN110-GLRE250	250mm (273.0)
VN110-GLRE300	300mm (323.9)

***SPECIAL ORDER**



SECTION 11

W110 AGS LONG RADIUS ELBOWS 45D

Painted

VN110-LR350	350mm (355.6)
VN110-LR400	400mm (406.4)
VN110-LR450	450mm (457.2)
VN110-LR500	500mm (508.0)
VN110-LR600	600mm (610.0)

***SPECIAL ORDER**

Galvanised

VN110-GLR350	350mm (355.6)
VN110-GLR400	400mm (406.4)
VN110-GLR450	450mm (457.2)
VN110-GLR500	500mm (508.0)
VN110-GLR600	600mm (610.0)

***SPECIAL ORDER**



Code **Description** **Size**

#20 EQUAL TEE

Painted

VN20-T25	25mm (33.7)
VN20-T32	32mm (42.4)
VN20-T40	40mm (48.3)
VN20-T50	50mm (60.3)
VN20-T65	65mm (73.0)
VN20-T80	80mm (88.9)
VN20-T100	100mm (114.3)
VN20-T125	125mm (141.3)
VN20-T150	150mm (168.3)
VN20-T200	200mm (219.1)
VN20-T250	250mm (273.0)
VN20-T300	300mm (323.9)



Galvanised

VN20-GT25	25mm (33.7)
VN20-GT32	32mm (42.4)
VN20-GT40	40mm (48.3)
VN20-GT50	50mm (60.3)
VN20-GT65	65mm (73.0)
VN20-GT80	80mm (88.9)
VN20-GT100	100mm (114.3)
VN20-GT125	125mm (141.3)
VN20-GT150	150mm (168.3)
VN20-GT200	200mm (219.1)
VN20-GT250	250mm (273.0)
VN20-GT300	300mm (323.9)

W20 AGS EQUAL TEE

Painted

VN20-T350	350mm (355.6)
VN20-T400	400mm (406.4)
VN20-T450	450mm (457.2)
VN20-T500	500mm (508.0)
VN20-T600	600mm (610.0)



Galvanised

VN20-GT350	350mm (355.6)
VN20-GT400	400mm (406.4)
VN20-GT450	450mm (457.2)
VN20-GT500	500mm (508.0)
VN20-GT600	600mm (610.0)

Code **Description** **Size**

#25 REDUCING TEE

Victaulic fittings are designed specifically for use in grooved piping systems. Fittings are provided grooved or with shoulders conforming to standard steel pipe outside diameters.

Painted

VN25-RT65X50	073 x 060 OD
VN25-RT80X50	323 x 273 OD
VN25-RT80X65	089 x 073 OD
VN25-RT100X50	114 x 060 OD
VN25-RT100X65	114 x 073 OD
VN25-RT100X80	114 x 089 OD
VN25-RT125X65	141 x 073 OD
VN25-RT125X80	141 x 089 OD
VN25-RT125X100	141x114 OD
VN25-RT150X65	168 x 073 OD
VN25-RT150X80	168 x 089 OD
VN25-RT150X100	168 x 114 OD
VN25-RT150X125	168 x 141 OD
VN25-RT200X100	219 x 114 OD
VN25-RT200X125	219 x 141 OD
VN25-RT200X150	219 x 168 OD
VN25-RT250X100	273 x 114 OD
VN25-RT250X150	273 x 168 OD
VN25-RT250X200	273 x 219 OD
VN25-RT300X150	323 x 168 OD
VN25-RT300X200	323 x 219 OD
VN25-RT300X250	323 x 273 OD



Galvanised

VN25-GRT65X50	073 x 060 OD
VN25-GRT80X50	089 x 060 OD
VN25-GRT80X65	089 x 073 OD
VN25-GRT100X50	114 x 060 OD
VN25-GRT100X65	114 x 073 OD
VN25-GRT100X80	114 x 089 OD
VN25-GRT125X65	141 x 060 OD SWS
VN25-GRT125X80	141 x 073 OD
VN25-GRT125X100	141 x 089 OD
VN25-GRT150X65	141 x 114 OD
VN25-GRT150X80	168 x 060 OD
VN25-GRT150X100	168 x 073 OD
VN25-GRT150X125	168 x 089 OD
VN25-GRT150X125	168 x 114 OD
VN25-GRT200X125	219 x 114 OD
VN25-GRT200X125	219 x141 OD SWS
VN25-GRT250X100	219 x 168 OD
VN25-GRT250X150	273 x168 OD
VN25-GRT250X200	273 x 219 OD

SECTION 11

FIRE & HVAC

SECTION 11

Code	Description	Size
VN25-GRT300X150		323 x 168 OD SWS
VN25-GRT300X200		323 x 219 OD
VN25-GRT300X250		323 x 273 OD

W25 AGS REDUCING TEE

Painted

VN25-RT350X200		350 x 250mm
VN25-RT350X250		350 x 250mm
VN25-RT350X300		350 x 300mm
VN25-RT400X200		400 x 200mm
VN25-RT400X250		400 x 250mm
VN25-RT400X300		400 x 300mm
VN25-RT400X350		400 x 350mm
VN25-RT450X250		450 x 250mm
VN25-RT450X300		450 x 300mm
VN25-RT450X350		450 x 350mm
VN25-RT500X250		500 x 250mm

***SPECIAL ORDER**

Galvanised

VN25-GRT350X200		350 x 250mm
VN25-GRT350X250		350 x 250mm
VN25-GRT350X300		350 x 300mm
VN25-GRT400X200		400 x 200mm
VN25-GRT400X250		400 x 250mm
VN25-GRT400X300		400 x 300mm
VN25-GRT400X350		400 x 350mm
VN25-GRT450X250		450 x 250mm
VN25-GRT450X300		450 x 300mm
VN25-GRT450X350		450 x 350mm
VN25-GRT500X250		500 x 250mm

***Special Order**



Code	Description	Size
#60 CAP		
Fittings are supplied with grooved or shouldered ends to permit fast installation without field preparation. Fittings conform to the pressure ratings of Style 77 couplings. Not intended for use with Victaulic couplings for plain end pipe.		
Painted		
VN60-25		25mm (33.7)
VN60-32		32mm (42.4)
VN60-40		40mm (48.3)
VN60-50		50mm (60.3)
VN60-65		65mm (73.0)
VN60-80		80mm (88.9)
VN60-100		100mm (114.3)
VN60-125		125mm (141.3)
VN60-150		150mm (168.3)
VN60-200		200mm (219.1)
VN60-250		250mm (273.0)
VN60-300		300mm (323.9)



Galvanised		
VN60-25G		25mm (33.7)
VN60-32G		32mm (42.4)
VN60-40G		40mm (48.3)
VN60-50G		50mm (60.3)
VN60-65G		65mm (73.0)
VN60-80G		80mm (88.9)
VN60-100G		100mm (114.3)
VN60-125G		125mm (141.3)
VN60-150G		150mm (168.3)
VN60-200G		200mm (219.1)
VN60-250G		250mm (273.0)
VN60-300G		300mm (323.9)



W20 AGS CAP		
Painted		
VN60-350		350mm (355.6)
VN60-400		400mm (406.4)
VN60-450		450mm (457.2)
VN60-500		500mm (508.0)
VN60-600		600mm (610.0)
*Special Order		
Galvanised		
VN60-350G		350mm (355.6)
VN60-400G		400mm (406.4)
VN60-450G		450mm (457.2)
VN60-500G		500mm (508.0)
VN60-600G		600mm (610.0)
*Special Order		

Code **Description** **Size**

#50 CONCENTRIC REDUCERS

Pressure rated to conform to the pressure ratings of Victaulic Style W77/W07 AGS couplings. Supplied with AGS grooves to permit fast installation without field preparation. Advance Groove System (AGS) products must not be used to join original groove system (OGS) products.

Painted

VN50-R50X25	060 x 033 OD
VN50-R50X40	060 x 048 OD
VN50-R65X50	073 x 060 OD
VN50-R80X40	089 x 048 OD
VN50-R80X50	089 x 060 OD
VN50-R80X65	089 x 073 OD
VN50-R100X50	114 x 060 OD
VN50-R100X65	114 x 073 OD
VN50-R100X80	114 x 089 OD
VN50-R125X65	141 x 073 OD
VN50-R125X80	141 x 089 OD
VN50-R125X100	141 x 114 OD
VN50-R150X80	168 x 089 OD
VN50-R150X100	168 x 114 OD
VN50-R150X125	168 x 141 OD
VN50-R200x80	219 x 89 OD
VN50-R200X100	219 x 114 OD
VN50-R200X125	219 x 141 OD
VN50-R200X150	219 x 168 OD
VN50-R250X150	273 x 168 OD
VN50-R250X200	273 x 219 OD
VN50-R300X150	323 x 168 OD
VN50-R300X200	323 x 219 OD
VN50-R300X250	323 x 273 OD



Galvanised

VN50-GR50X25	060 x 033 OD
VN50-GR50X32	060 x 042 OD
VN50-GR50X40	060 x 048 OD
VN50-GR65X50	073 x 060 OD
VN50-GR80X40	089 x 048 OD
VN50-GR80X50	089 x 060 OD
VN50-GR80X65	089 x 073 OD
VN50-GR100X50	114 x 060 OD
VN50-GR100X65	114 x 073 OD
VN50-GR100X80	114 x 089 OD
VN50-GR125X80	141 x 089 OD
VN50-GR125X100	141 x 114 OD
VN50-GR150X80	168 x 089 OD
VN50-GR150X100	168 x 114 OD
VN50-GR150X125	168 x 141 OD
VN50-GR200X80	219 x 089 OD



Code	Description	Size
VN50-GR200X100		219 x 114 OD
VN50-GR200X125		219 x 141 OD
VN50-GR200X150		219 x 168 OD
VN50-GR250X150		273 x 168 OD
VN50-GR250X200		273 x 219 OD
VN50-GR300X200		323 x 219 OD
VN50-GR300X250		323 x 273 OD

W50 AGS CONCENTRIC REDUCERS

Pressure rated to conform to the pressure ratings of Victaulic Style W77/W07 AGS couplings. Supplied with AGS grooves to permit fast installation without field preparation. Advance Groove System (AGS) products must not be used to join original groove system (OGS) products.

Painted

VN50-R350X300		355 x 323 OD
VN50-R350X250		355 x 273 OD
VN50-R350X200		355 x 219 OD
VN50-R400X350		406 x 355 OD
VN50-R400X300		406 x 323 OD
VN50-R450X400		457 x 406 OD
VN50-R450X350		457 x 355 OD
VN50-R450X300		406 x 273 OD
VN50-R500X400		508 x 406 OD
VN50-R500X450		508 x 457 OD
VN50-R600X500		
VN50-R600X450		



Galvanised

VN50-R350X200		355 x 219 OD
VN50-R350X300		355 x 323 OD
VN50-R350X250		355 x 273 OD
VN50-R400X300		406 x 323 OD
VN50-R400X350		400 x 350 OD
VN50-R450X350		457 x 355 OD
VN50-R500X400		508 x 406 OD
VN50-R500X450		508 x 457 OD
VN50-GR600X500		
VN50-GR600X450		

***SPECIAL ORDER**

SECTION 11

FIRE & HVAC

Code Description Size

#51 ECCENTRIC REDUCERS

Fittings are supplied with grooved or shouldered ends to permit fast installation without field preparation. Fittings conform to the pressure ratings of Style 77 couplings. Not intended for use with Victaulic couplings for plain end pipe.

Painted

VN51-R65X50	073 x 060 OD
VN51-R80X50	089 x 060 OD
VN51-R80X65	089 x 073 OD
VN51-R100X50	114 x 060 OD
VN51-R100X65	114 x 073 OD
VN51-R100X80	114 x 089 OD
VN51-R125X80	141 x 089 OD
VN51-R125X100	141 x 114 OD
VN51-R150X80	168 x 089 OD
VN51-R150X100	168 x 114 OD
VN51-R150X125	168 x 141 OD
VN51-R200X100	219 x 114 OD
VN51-R200X125	219 x 141 OD
VN51-R200X150	219 x 168 OD
VN51-R250X150	273 x 168 OD
VN51-R250X200	273 x 219 OD
VN51-R300X200	323 x 219 OD
VN51-R300X250	323 x 273 OD

***SPECIAL ORDER**

Galvanised

VN51-GR65X50	073 x 060 OD
VN51-GR80X50	089 x 060 OD
VN51-GR80X65	089 x 073 OD
VN51-GR100X50	114 x 060 OD
VN51-GR100X65	114 x 073 OD
VN51-GR100X80	114 x 089 OD
VN51-GR125X80	141 x 089 OD
VN51-GR125X100	141 x 114 OD
VN51-GR150X80	168 x 089 OD
VN51-GR150X100	168 x 114 OD
VN51-GR150X125	168 x 141 OD
VN51-GR200X80	219 x 089 OD
VN51-GR200X100	219 x 114 OD
VN51-GR200X125	219 x 141 OD
VN51-GR200X150	219 x 168 OD
VN51-GR250X150	273 x 168 OD
VN51-GR250X200	273 x 219 OD
VN51-GR300X200	323 x 219 OD
VN51-GR300X250	323 x 273 OD

***SPECIAL ORDER**



Code **Description** **Size**

W51 AGS ECCENTRIC REDUCERS

Painted

VN51-R350X250		355 x 273 OD
VN51-R350X300		355 x 323 OD
VN51-R400X250		406 x 273 OD
VN51-R400X300		406 x 323 OD
VN51-R400X350		406 x 355 OD
VN51-R450X350		457 x 355 OD
VN51-R450X400		457 x 406 OD
VN51-R500X400		508 x 406 OD
VN51-R500X450		508 x 457 OD

***SPECIAL ORDER**

Galvanised

VN51-GR350X300		355 x 273 OD
VN51-GR400X250		355 x 323 OD
VN51-GR400X300		406 x 273 OD
VN51-GR400X350		406 x 323 OD
VN51-GR450X350		406 x 355 OD
VN51-GR450X400		457 x 355 OD
VN51-GR500X400		508 x 406 OD
VN51-GR500X450		508 x 457 OD

*Special order



#731 SUCTION DIFFUSERS

RG X PN16 FLANGED

Painted

V731D-80X50		089 x 060 OD
V731D-80X65		089 x 076 OD
V731D-80X80		089 x 089 OD
V731D-100X50		114 x 060 OD
V731D-100X65		114 x 076 OD
V731D-100X80		114 x 089 OD
V731D-100X100		114 x 114 OD
V731D-125X80		141 x 089 OD
V731D-125X100		141 x 114 OD
V731D-125X125		141 x 141 OD
V731D-150X80		168 x 089 OD
V731D-150X100		168 x 114 OD
V731D-150X125		168 x 141 OD
V731D-150X150		168 x 168 OD
V731D-200x125		219 x 141 OD
V731D-200X150		219 x 165/168 OD
V731D-200X200		219 x 219 OD
V731D-250X150		273 x 165/168 OD



SECTION 11

FIRE & HVAC

SECTION 11

Code	Description	Size
V731D-250X200		273 x 219 OD
V731D-250X250		273 x 273 OD
V731D-300X200		323 x 219 OD
V731D-300X250		323 x 273 OD
V731D-300X300		323 x 323 OD

RG X TABLE E FLANGED

Painted

V731D-80x50-TE		089 x 060 OD
V731D-80X60-TE		089 x 060 OD
V731D-80X65-TE		089 x 076 OD
V731D-80X80-TE		089 x 089 OD
V731D-100X50-TE		114 x 060 OD
V731D-100X80-TE		114 x 089 OD
V731D-125X80-TE		141 x 089 OD
V731D-125X100-TE		141 x 114 OD
V731-200X125-TE		219 x 141 OD
V731D-200X150-TE		219 x 168 OD
V731D-200X200-TE		219 x 219 OD
V731D-250X200-TE		273 x 219 OD

***SPECIAL ORDER**

RG X ANSI FLANGED

Painted

V731D80x50-ANSI		089 x 060 OD
V731D-80X60-ANSI		089 x 060 OD
V731D-80X65-ANSI		089 x 076 OD
V731D-80X80-ANSI		089 x 089 OD
V731D-100X50-ANSI		114 x 060 OD
V731D-100X80-ANSI		114 x 089 OD
V731D-125X80-ANSI		141 x 089 OD
V731D-125X100-ANSI		141 x 114 OD
V731-200X125-ANSI		219 x 141 OD
V731D-200X150-ANSI		219 x 168 OD
V731D-200X200-ANSI		219 x 219 OD
V731D-250X200-TANSI		273 x 219 OD

***SPECIAL ORDER**

*

W731D AGS SUCTION DIFFUSERS (R/G X PN16)

V731D-350X250		355 x 273 OD
V731D-350X300		355 x 323 OD
V731D-350X350		355 x 355 OD
V731D-400X300		406 x 323 OD
V731D-400X350		406 x 355 OD
V731D-400X400		406 x 406 OD

***SPECIAL ORDER**



Code	Description	Size
#732 Y STRAINER		
<i>Painted</i>		
V732-YS50		50mm (60.3)
V732-YS65		65mm (73.0)
V732-YS80		80mm (88.9)
V732-YS100		100mm (114.3)
V732-YS125		125mm (141.3)
V732-YS150		150mm (168.3)
V732-YS200		200mm (219.1)
V732-YS250		250mm (273.0)
V732-YS300		300mm (323.9)
<i>Galvanised</i>		
V732-GYS50		50mm (60.3)
V732-GYS65		65mm (73.0)
V732-GYS80		80mm (88.9)
V732-GYS100		100mm (114.3)
V732-GYS125		125mm (141.3)
V732-GYS150		150mm (168.3)
V732-GYS200		200mm (219.1)
V732-GYS250		250mm (273.0)
V732-GYS300		300mm (323.9)
*Galvanised Special Order		
W732 AGS Y STRAINER		
VW732-YS350		350mm (355.6)
VW732-YS400		400mm (406.4)
VW732-YS450		450mm (457.2)



***Special Order**

*For all Extra Large Diameter size 650mm to 900mm enquiries please contact Sales.

Code

Description

Size

COPPER TUBE JOINING SOLUTIONS

INCREASE PRODUCTIVITY AND REDUCE REWORK

Victaulic grooved end piping system is the fastest method available to join copper tubing:

- Install twice as fast as welding, brazing or soldering
- Reduce rework on site by 10 - 15% by eliminating the need to braze or solder systems
- Eliminate costly firewatch, hazardous fumes and flames, and tanks and torches on site



Victaulic copper products are ideal for use in plumbing and HVAC applications including:

- Potable water systems
- Storm water and roof drain systems
- Vacuum plumbing systems
- Drain, waste and vent systems
- Heating water systems
- Condenser water systems
- Chilled water systems
- Hydrant systems

Couplings and Fittings

- Couplings available in 2 -8" | 50 - 200 mm to join Type A, B and D copper tube in accordance with AS-1432
- Fittings available in 2 -6" | 50 - 150 mm and are manufactured in accordance with AS-3688
- Butterfly valves available in 2-6" | 50-150mm
- Rated for pressures up to 2450 kPa/355 psi (depending on copper tubing type and size)



Code Description Size

VICTAULIC COPPER AU ROLL GROOVE SYSTEM & R/G BRAZING ADAPTORS

#606 COPPER COUPLING

VC606-50	50mm 50.8 OD
VC606-65	65mm 63.5 OD
VC606-80	80mm 76.2 OD
VC606-100	100mm 101.6 OD
VC606-125	125mm 127 OD
VC606-150	150mm 152.4 OD
VC606-200	200mm 203.2 OD



#610 COPPER ELBOW 90D

VC610-50	50mm 50.8 OD
VC610-65	65mm 63.5 OD
VC610-80	80mm 76.2 OD
VC610-100	100mm 101.6 OD
VC610-125	125mm 127 OD
VC610-150	150mm 152.4 OD



#611 COPPER ELBOW 45D

VC611-50	50mm 50.8 OD
VC611-65	65mm 63.5 OD
VC611-80	80mm 76.2 OD
VC611-100	100mm 101.6 OD
VC611-125	125mm 127 OD
VC611-150	150mm 152.4 OD



#620 COPPER EQUAL TEE

VC620-50	50mm 50.8 OD
VC620-65	65mm 63.5 OD
VC620-80	80mm 76.2 OD
VC620-100	100mm 101.6 OD
VC620-125	125mm 127 OD
VC620-150	150mm 152.4 OD



SECTION 11

FIRE & HVAC

Code	Description	Size
#650 COPPER CONCENTRIC REDUCER		
VC650-65x50	Victaulic F650/ 63.5x50.8 Rd COP	63.5x50.8 OD
VC650-80x50	Victaulic F650/ 76.2x50.8 Rd COP	76.2x50.8 OD
VC650-80x65	Victaulic F650/ 76.2x63.5 Rd COP	76.2x63.5 OD
VC650-100x50	Victaulic F650/ 101.6x50.8 Rd COP	101.6x50.8 OD
VC650-100x65	Victaulic F650/ 101.6x63.5 Rd COP	101.6x63.5 OD
VC650-100x80	Victaulic F650/ 101.6x76.2 Rd COP	101.6x76.2 OD
VC650-125x80	Victaulic F650/ 127x76.2 Rd COP	127x76.2 OD
VC650-125x100	Victaulic F650/ 127x101.6 Rd COP	127x101.6 OD
VC650-150x80	Victaulic F650/ 152.4x76.2 Rd COP	152.4x76.2 OD
VC650-150x100	Victaulic F650/ 152.4x101.6 Rd COP	152.4x101.6 OD
VC650-150x125	Victaulic F650/ 152.4x127 Rd COP	152.4x127 OD



#660 COPPER CAP

VC660-50	Victaulic F660/ 50.8 AUSTRALIA COP CAP	50mm 50.8 OD
VC660-65	Victaulic F660/ 63.5 AUSTRALIA COP CAP	65mm 63.5 OD
VC660-80	Victaulic F660/ 76.2 AUSTRALIA COP CAP	80mm 76.2 OD
VC660-100	Victaulic F660/ 101.6 AUSTRALIA COP CAP	100mm 101.6 OD
VC660-125	Victaulic F660/ 127 AUSTRALIA COP CAP	125mm 127 OD
VC660-150	Victaulic F660/ 152.4 AUSTRALIA COP CAP	150mm 152.4 OD



#608N VALVE TO SUIT COPPER SYSTEM

VC608N-50	Victaulic V608N/ 50.8 COP CHP-3 W/FF BKT	50mm 50.8 OD
VC608N-65	Victaulic V608N/ 63.5 COP CHP-3 W/FF BKT	65mm 63.5 OD
VC608N-80	Victaulic V608N/ 76.2 COP CHP-3 W/FF BKT	80mm 76.2 OD
VC608N-100	Victaulic V608N/101.6 COP CHP-3 W/FF BKT	100mm 101.6 OD
VC608N-125	Victaulic V608N/ 127 COP CHP-3 W/FF BKT	125mm 127 OD
VC608N-150	Victaulic V608N/ 152.4 COP CHP-3 W/FF BKT	150mm 152.4 OD



#475 S/S FLEXIBLE COUPLINGS

V475-SFC25	25mm (33.7)
V475-SFC32	32mm (42.4)
V475-SFC40	40mm (48.3)
V475-SFC50	50mm (60.3)
V475-SFC65	65mm (73.0)
V475-SFC80	80mm (88.9)
V475-SFC100	100mm (114.3)



SECTION 11

FIRE & HVAC

Code	Description	Size
RGCA ROLL GROOVE COPPER BRAZING ADAPTORS		
RGCA-50		50mm BS/IPS
RGCA-73.0		65mm (73.0OD) IPS
RGCA-65A		65mm (76.1OD) BS
RGCA-80		80mm (88.9OD) BSIPS
RGCA-100		100mm (114.3OD) BS/IPS
RGCA-141.3		125mm (141.3OD) IPS
RGCA-150A		150mm (165.1OD) BS
RGCA-168.3		150mm (168.3OD) IPS
RGCA-200		200mm (219.1OD) BS/IPS



*IPS - Schedule (73od, 141od, 168od)
*BS - AS/BS (76od, 139od, 165od)

VICTAULIC STAINLESS STEEL SYSTEM

#89 GALVANISED RIGID COUPLINGS TO SUIT S/S PIPE

V089-GRC50	50mm (60.3)
V089-GRC65	65mm (73.0)
V089-GRC80	80mm (88.9)
V089-GRC100	100mm (114.3)
V089-GRC125	125mm (141.3)
V089-GRC150	150mm (168.3)
V089-GRC200	200mm (219.1)
V089-GRC250	250mm (273.0)
V089-GRC300	300mm (323.9)

W89 AGS GALVANISED RIGID COUPLINGS TO SUIT S/S PIPE

VW89-GRC350	350mm (355.6)
VW89-GRC400	400mm (406.4)
VW89-GRC450	450mm (457.2)
VW89-GRC500	500mm (508.0)
VW89-GRC600	610mm (610.0)

* **Special Order**

#489 S/S RIGID COUPLINGS

V489-40	40mm (48.3)
V489-50	50mm (60.3)
V489-65	65mm (73.0)
V489-80	80mm (88.9)
V489-100	100mm (114.3)
V489-150	150mm (168.3)
V489-200	200mm (219.1)
V489-250	250mm (273.0)
V489-300	300mm (323.9)



Code	Description	Size
#77S HIGH PRESSURE S/S FLEXIBLE COUPLINGS		
V77S-SFC20		20mm (26.9)
V77S-SFC25		25mm (33.7)
V77S-SFC32		32mm (42.4)
V77S-SFC40		40mm (48.3)
V77S-SFC50		50mm (60.3)
V77S-SFC65		65mm (73.0)
V77S-SFC80		80mm (88.9)
V77S-SFC100		100mm (114.3)
V77S-SFC150		150mm (168.3)
V77S-SFC200		200mm (219.1)
V77S-SFC250		250mm (273.0)
V77S-SFC300		300mm (323.9)
#441 S/S FLANGE ADAPTOR		
V441-FA50		50mm (60.3) ANSI
V441-FA65		65mm (73.0) ANSI
V441-FA80		80mm (88.9) ANSI
V441-FA100		100mm (114.3) ANSI
V441-FA150		150mm (168.3) ANSI
*Only available in ANSI Flange Drilling		
#410 S/S ELBOW 90D		
VN410-E40		40mm (48.3)
VN410-E50		50mm (60.3)
VN410-E65		65mm (73.0)
VN410-E80		80mm (88.9)
VN410-E100		100mm (114.3)
VN410-E150		150mm (168.3)
VN410-E200		200mm (219.1)
VN410-E250		250mm (273.0)
VN410-E300		300mm (323.9)
#411 S/S ELBOW 90D		
VN411-E50		50mm (60.3)
VN411-E65		65mm (73.0)
VN411-E80		80mm (88.9)
VN411-E100		100mm (114.3)
VN411-E150		150mm (168.3)
VN411-E200		200mm (219.1)
VN411-E250		250mm (273.0)
VN411-E300		300mm (323.9)



Code	Description	Size
#420 S/S EQUAL TEE		
VN420-T50		50mm (60.3)
VN420-T65		65mm (73.0)
VN420-T80		80mm (88.9)
VN420-T100		100mm (114.3)
VN420-T150		150mm (168.3)
VN420-T200		200mm (219.1)
VN420-T250		250mm (273.0)
VN420-T300		300mm (323.9)



#425 S/S REDUCING TEE

V425-RT50X40		060 x 048 OD
V425-RT65X50		073 x 060 OD
V425-RT80X40		089 x 048 OD
V425-RT80X50		089 x 060 OD
V425-RT80X65		089 x 073 OD
V425-RT100X50		114 x 060 OD
V425-RT100X65		114 x 073 OD
V425-RT100X80		114 x 089 OD
V425-RT150X80		168 x 089 OD
V425-RT150X100		168 x 114 OD
V425-RT200X100		219 x 114 OD
V425-RT200X150		219 x 168 OD
V425-RT250X150		273 x 168 OD
V425-RT250X200		273 x 219 OD
V425-RT300X200		323 x 219 OD
V425-RT300X250		323 x 273 OD



#450 S/S CONCENTRIC REDUCER

VN450-R40X25		048 x 033 OD
VN450-R50X40		060 x 048 OD
VN450-R65X50		073 x 060 OD
VN450-R80X50		089 x 060 OD
VN450-R80X65		089 x 073 OD
VN450-R100X50		114 x 060 OD
VN450-R100X65		114 x 073 OD
VN450-R100X80		114 x 089 OD
VN450-R150X80		168 x 089 OD
VN450-R150X100		168 x 114 OD
VN450-R200X100		219 x 114 OD
VN450-R200X150		219 x 168 OD
VN450-R250X150		273 x 168 OD
VN450-R250X200		273 x 219 OD
VN450-R300X200		323 x 219 OD
VN450-R300X250		323 x 273 OD



SECTION 11 FIRE & HVAC

Code	Description	Size
#460 S/S CAP		
VN460-C80		80mm (88.9)
VN460-C100		100mm (114.3)
VN460-C150		150mm (168.3)
VN460-C200		200mm (219.1)
VN460-C250		250mm (273.0)
VN460-C300		300mm (323.9)



#763 VALVE GEAR FOR S/S SYSTEMS

V763-80G		80mm (88.9)
V763-100G		100mm (114.3)
V763-150G		150mm (168.3)
V763-200G		200mm (219.1)

#726S S/S VALVE

V726S-50		50mm (60.3)
V726S-80		80mm (88.9)
V726S-100		100mm (114.3)

GALVANISED MALLEABLE IRON FITTINGS

G120 ELBOWS 45 DEG F/F

F/F Galvanised. Elbows, 45, Banded Equal

GE1045		10mm
GE1545		15mm
GE2045		20mm
GE2545		25mm
GE3245		32mm
GE4045		40mm
GE5045		50mm



G121 STREET ELBOWS 45 DEG M/F

Galvanised. Street Elbows, 45, Banded, Equal

GMFE1045		10mm
GMFE1545		15mm
GMFE2045		20mm
GMFE2545		25mm
GMFE3245		32mm
GMFE4045		40mm
GMFE5045		50mm



Code **Description** **Size**

G90 ELBOWS 90 DEG F/F

Galvanised. Elbows, 90, Banded, Equal

GE10	10mm
GE15	15mm
GE20	20mm
GE25	25mm
GE32	32mm
GE40	40mm
GE50	50mm



G92 STREET ELBOWS 90 DEG M/F

Galvanised. Street Elbows, 90, Banded, Equal

GMFE10	10mm
GMFE15	15mm
GMFE20	20mm
GMFE25	25mm
GMFE32	32mm
GMFE40	40mm
GMFE50	50mm



G90R ELBOWS REDUCING 90 DEG F/F

Galvanised. Elbows, 90, Banded, Reducing

GRE1510	15x10mm
GRE2010	20x10mm
GRE2015	20x15mm
GRE2510	25x10mm
GRE2515	25x15mm
GRE2520	25x20mm
GRE3215	32x15mm
GRE3225	32x25mm
GRE4015	40x15mm
GRE4025	40x25mm
GRE4032	40x32mm
GRE5020	50x20mm
GRE5025	50x25mm
GRE5032	50x32mm
GRE5040	50x40mm



G1A SHORT BENDS 90 DEG M&F

Galvanised. Short Bends 90 M/F

GMFBS15	15mm
GMFBS20	20mm
GMFBS25	25mm
GMFBS32	32mm
GMFBS40	40mm
GMFBS50	50mm



Code	Description	Size
G2A SHORT BENDS 90 DEG F&F		
Galvanised. Short Bends 90 F/F		
GFBS15		15mm
GFBS20		20mm
GFBS25		25mm
GFBS32		32mm
GFBS40		40mm
GFBS50		50mm
G130 TEE EQUAL		
Galvanised. Tees, Banded, Equal		
GT15		15mm
GT20		20mm
GT25		25mm
GT32		32mm
GT40		40mm
GT50		50mm
G130R TEE REDUCING		
Galvanised. Tees, Banded Reducing		
GRT1510		15 x 10mm
GRT2015		20x15mm
GRT2510		25x10mm
GRT2515		25x15mm
GRT2532		25x32mm
GRT2520		25x20mm
GRT3210		32x10mm
GRT3215		32x15mm
GRT3220		32x20mm
GRT3225		32x25mm
GRT322525		32x25x25mm
GRT322532		32x25x32mm
GRT323240		32x32x40mm
GRT323250		32x32x50mm
GRT4015		40x15mm
GRT4025		40x25mm
GRT4032		40x32mm
GRT5015		50x15mm
GRT5025		50x25mm
GRT5032		50x32mm
GRT5040		50x40mm



Code **Description**

Size

G180 CROSSES EQUAL

Galvanised. Crosses, Banded, Equal

GCE15	15mm
GCE20	20mm
GCE25	25mm
GCE32	32mm
GCE40	40mm
GCE50	50mm



G220 SOCKETS (COUPLINGS)

Galvanised. Sockets (Coupling), Banded

GS15	15mm
GS20	20mm
GS25	25mm
GS32	32mm
GS40	40mm
GS50	50mm



G240 SOCKETS REDUCING (COUPLINGS)

Galvanised. Reducing Sockets, (Reducers)

GRS2015	20 x 15mm
GRS2510	25 x 10mm
GRS2515	25 x 15mm
GRS2520	25 x 20mm
GRS3215	32 x 15mm
GRS3220	32 x 20mm
GRS3225	32 x 25mm
GRS4025	40 x 25mm
GRS4032	40 x 32mm
GRS5025	50 x 25mm
GRS5032	50 x 32mm
GRS5040	50 x 40mm



G280 HEX NIPPLES EQUAL

Galvanised. Hexagon Nipples Equal

GHN10	10mm
GHN15	15mm
GHN20	20mm
GHN25	25mm
GHN32	32mm
GHN40	40mm
GHN50	50mm



SECTION 11

FIRE & HVAC

Code	Description	Size
HEX NIPPLES REDUCING		
Galvanised. Hexagon Nipples Reducing		
GRHN1508		15 x 08mm
GRHN1510		15 x 10mm
GRHN2015		20 x 15mm
GRHN2515		25 x 15mm
GRHN2520		25 x 20mm
GRHN3225		32 x 25mm
GRHN4025		40 x 25mm
GRHN4032		40 x 32mm
GRHN5032		50 x 32mm
GRHN5040		50 x 40mm



G241 HEX BUSHES

Galvanised. Hexagon Bushes

GRB1008		10 x 08mm
GRB1510		15 x 10mm
GRB2015		20 x 15mm
GRB2010		20 x 10mm
GRB2510		25 x 10mm
GRB2515		25 x 15mm
GRB2520		25 x 20mm
GRB3215		32 x 15mm
GRB3220		32 x 20mm
GRB3225		32 x 25mm
GRB4015		40 x 15mm
GRB4020		40 x 20mm
GRB4025		40 x 25mm
GRB4032		40 x 32mm
GRB5015		50 x 15mm
GRB5020		50 x 20mm
GRB5025		50 x 25mm
GRB5032		50 x 32mm
GRB5040		50 x 40mm



G330 HEX UNIONS - FLAT SEAT (W/O GASKET)

Galvanised. Unions, Flat Seat, Hexagon, Without Gasket

GUFH15		15mm
GUFH20		20mm
GUFH25		25mm
GUFH32		32mm
GUFH40		40mm



Code	Description	Size
G340 HEX UNIONS - IRON TO IRON SEAT		
Galvanised. Unions, Conical Joint, Brass To Iron Seat		
GCU15		15mm
GCU20		20mm
GCU25		25mm
GCU32		32mm
GCU40		40mm
GCU50		50mm
G342 HEX UNIONS - BRASS TO IRON SEAT		
Galvanised. Unions, Conical Joint, Brass To Iron Seat		
GCUB15		15mm
GCUB20		20mm
GCUB25		25mm
GCUB32		32mm
GCUB40		40mm
G291 PLUGS		
GP08		8mm
GP10		10mm
GP15		15mm
GP20		20mm
GP25		25mm
GP32		32mm
GP40		40mm
GP50		50mm
G300 CAPS		
GC15		15mm
GC20		20mm
GC25		25mm
GC32		32mm
GC40		40mm
GC50		50mm
G321 FLOOR FLANGES WITH 4 BOLT HOLES		
GF4B15E		15mm
GF4B20E		20mm
GF4B25E		25mm
GF4B32E		32mm
GF4B40E		40mm
GF4B50E		50mm



Code	Description	Size
G529A EXTENSION PIECES		
GPE15		15mm
GPE20		20mm
GPE25		25mm
GPE32		32mm
GPE40		40mm
GPE50		50mm
G310 LOCKNUTS / BACKNUTS		
GBNU10		10mm
GBNU15		15mm
GBNU20		20mm
GBNU25		25mm
GBNU32		32mm
GBNU40		40mm
GBNU50		50mm

Additional Fittings 6mm-100mm available. Contact Sales for information & prices.

SECTION 11

FIRE & HVAC

Code Description Size

BUTTWELD BLACK STEEL FITTINGS

BUTTWELD STEEL FITTINGS

90 DEG LONG RADIUS ELBOWS

BWE-90D-40	40mm (48.3)
BWE-90D-50	50mm (60.3)
BWE-90D-65	65mm (73.0)
BWE-90D-80	80mm (88.9)
BWE-90D-100	100mm (114.3)
BWE-90D-125	125mm (141.3)
BWE-90D-150	150mm (168.3)
BWE-90D-200	200mm (219.1)
BWE-90D-250	250mm (273.0)
BWE-90D-300	300mm (323.9)
BWE-90D-350	350mm (355.6)
BWE-90D-400	400mm (406.4)
BWE-90D-450	450mm (457.2)
BWE-90D-500	500mm (508.0)
BWE-90D-600	600mm (610.0)

90 DEG SHORT RADIUS ELBOWS

BWE-90DS-40	40mm (48.3)
BWE-90DS-50	50mm (60.3)
BWE-90DS-65	65mm (73.0)
BWE-90DS-80	80mm (88.9)
BWE-90DS-100	100mm (114.3)
BWE-90DS-125	125mm (141.3)
BWE-90DS-150	150mm (168.3)
BWE-90DS-200	200mm (219.1)
BWE-90DS-250	250mm (273.0)
BWE-90DS-300	300mm (323.9)
BWE-90DS-350	350mm (355.6)
BWE-90DS-400	400mm (406.4)
BWE-90DS-450	450mm (457.2)
BWE-90DS-500	500mm (508.0)
BWE-90DS-600	600mm (610.0)



SECTION 11 FIRE & HVAC

SECTION 11

Code	Description	Size
45 DEG LONG RADIUS ELBOWS		
BWE-45D-40		40mm (48.3)
BWE-45D-50		50mm (60.3)
BWE-45D-65		65mm (73.0)
BWE-45D-80		80mm (88.9)
BWE-45D-100		100mm (114.3)
BWE-45D-125		125mm (141.3)
BWE-45D-150		150mm (168.3)
BWE-45D-200		200mm (219.1)
BWE-45D-250		250mm (273.0)
BWE-45D-300		300mm (323.9)
BWE-45D-350		350mm (355.6)
BWE-45D-400		400mm (406.4)
BWE-45D-450		450mm (457.2)
BWE-45D-500		500mm (508.0)
BWE-45D-600		600mm (610.0)
EQUAL TEE		
BWT-40		40mm (48.3)
BWT-50		50mm (60.3)
BWT-65		65mm (73.0)
BWT-80		80mm (88.9)
BWT-100		100mm (114.3)
BWT-125		125mm (141.3)
BWT-150		150mm (168.3)
BWT-200		200mm (219.1)
BWT-250		250mm (273.0)
BWT-300		300mm (323.9)
BWT-350		350mm (355.6)
BWT-400		400mm (406.4)
BWT-450		450mm (457.2)
BWT-500		500mm (508.0)
BWT-600		600mm (610.0)



Code

Description

Size

CONCENTRIC REDUCERS

BWR-C40X32	40 x 32mm
BWR-C50X32	50 x 32mm
BWR-C50X40	50 x 40mm
BWR-C65X50	65 x 50mm
BWR-C65X40	65 x 40mm
BWR-C80X65	80 x 65mm
BWR-C80X50	80 x 50mm
BWR-C80X40	80 x 40mm
BWR-C100X80	100 x 80mm
BWR-C100X65	100 x 65mm
BWR-C100X50	100 x 50mm
BWR-C125X100	125 x 100mm
BWR-C125X80	125 x 80mm
BWR-C125X65	125 x 65mm
BWR-C125X50	125 x 50mm
BWR-C150X125	150 x 125mm
BWR-C150X100	150 x 100mm
BWR-C150X80	150 x 80mm
BWR-C150X65	150 x 65mm
BWR-C200X150	200 x 150mm
BWR-C200X125	200 x 125mm
BWR-C200X100	200 x 100mm
BWR-C200X80	200 x 80mm
BWR-C250X200	250 x 200mm
BWR-C250X150	250 x 150mm
BWR-C250X125	250 x 125mm
BWR-C250X100	250 x 100mm
BWR-C300X250	300 x 250mm
BWR-C300X200	300 x 200mm
BWR-C300X150	300 x 150mm
BWR-C300X125	300 x 125mm
BWR-C300X100	300 x 100mm
BWR-C350X300	350 x 300mm
BWR-C350X250	350 x 250mm
BWR-C350X200	350 x 200mm
BWR-C350X150	350 x 150mm
BWR-C400X350	400 x 350mm
BWR-C400X250	400 x 250mm
BWR-C400X200	400 x 200mm
BWR-C400X150	400 x 150mm
BWR-C450X400	450 x 400mm
BWR-C450X350	450 x 350mm
BWR-C450X300	450 x 300mm
BWR-C450X250	450 x 250mm
BWR-C500X450	500 x 450mm
BWR-C500X400	500 x 400mm
BWR-C500X350	500 x 350mm



SECTION 11

SECTION 11

FIRE & HVAC

SECTION 11

Code	Description	Size
BWR-C500X300		500 x 300mm
BWR-C600X500		600 x 500mm
BWR-C600X450		600 x 450mm
BWR-C600X400		600 x 400mm

ECCENTRIC REDUCERS

BWR-40X32		40 x 32mm
BWR-50X32		50 x 32mm
BWR-50X40		50 x 40mm
BWR-65X50		65 x 50mm
BWR-65X40		65 x 40mm
BWR-80X65		80 x 65mm
BWR-80X50		80 x 50mm
BWR-80X40		80 x 40mm
BWR-100X80		100 x 80mm
BWR-100X65		100 x 65mm
BWR-100X50		100 x 50mm
BWR-125X100		125 x 100mm
BWR-125X80		125 x 80mm
BWR-125X65		125 x 65mm
BWR-125X50		125 x 50mm
BWR-150X125		150 x 125mm
BWR-150X100		150 x 100mm
BWR-150X80		150 x 80mm
BWR-150X65		150 x 65mm
BWR-200X150		200 x 150mm
BWR-200X125		200 x 125mm
BWR-200X100		200 x 100mm
BWR-200X80		200 x 80mm
BWR-250X200		250 x 200mm
BWR-250X150		250 x 150mm
BWR-250X125		250 x 125mm
BWR-250X100		250 x 100mm
BWR-300X250		300 x 250mm
BWR-300X200		300 x 200mm
BWR-300X150		300 x 150mm
BWR-300X125		300 x 125mm
BWR-300X100		300 x 100mm
BWR-350X300		350 x 300mm
BWR-350X250		350 x 250mm
BWR-350X200		350 x 200mm
BWR-350X150		350 x 150mm
BWR-400X350		400 x 350mm
BWR-400X250		400 x 250mm
BWR-400X200		400 x 200mm
BWR-400X150		400 x 150mm
BWR-450X400		450 x 400mm
BWR-450X350		450 x 350mm



Code	Description	Size
BWR-450X300		450 x 300mm
BWR-450X250		450 x 250mm
BWR-500X450		500 x 450mm
BWR-500X400		500 x 400mm
BWR-500X350		500 x 350mm
BWR-500X300		500 x 300mm
BWR-600X500		600 x 500mm
BWR-600X450		600 x 450mm
BWR-600X400		600 x 400mm

CAPS

BWCAP-40		40mm
BWCAP-50		50mm
BWCAP-65		65mm
BWCAP-80		80mm
BWCAP-100		100mm
BWCAP-125		125mm
BWCAP-150		150mm
BWCAP-200		200mm
BWCAP-250		250mm
BWCAP-300		300mm
BWCAP-350		350mm
BWCAP-400		400mm
BWCAP-450		450mm
BWCAP-500		500mm
BWCAP-600		600mm

BUTTWELD REDUCING TEES

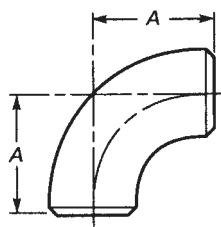
BWR-T20X15		20 x 15mm
BWR-T25X20		25 x 20mm
BWR-T32X20		32 x 20mm
BWR-T32X25		32 x 25mm
BWR-T40X20		40 x 20mm
BWR-T40X25		40 x 25mm
BWR-T40X32		40 x 32mm
BWR-T50X25		40 x 25mm
BWR-T50X32		40 x 32mm
BWR-T50X40		40 x 40mm
BWR-T65X25		50 x 25mm
BWR-T65X32		50 x 32mm
BWR-T65X40		50 x 40mm
BWR-T65X50		50 x 50mm
BWR-T80X40		80 x 40mm
BWR-T80X50		80 x 50mm
BWR-T80X65		80 x 65mm
BWR-T100X50		100 x 50mm
BWR-T100X65		100 x 65mm
BWR-T100X80		100 x 80mm



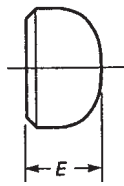
SECTION 11

FIRE & HVAC

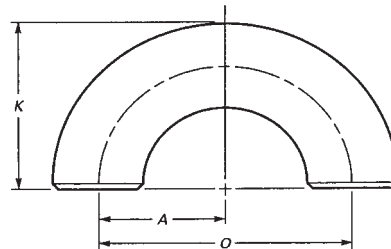
Code	Description	Size
BWR-T125X65		125 x 65mm
BWR-T125X80		125 x 80mm
BWR-T125X100		125 x 100mm
BWR-T150X65		150 x 65mm
BWR-T150X80		150 x 80mm
BWR-T150X100		150 x 100mm
BWR-T150X125		150 x 125mm
BWR-T200X65		200 x 65mm
BWR-T200X80		200 x 80mm
BWR-T200X100		200 x 100mm
BWR-T200X125		200 x 125mm
BWR-T200X150		200 x 150mm



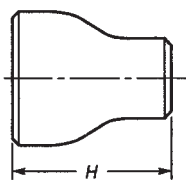
ELBOW



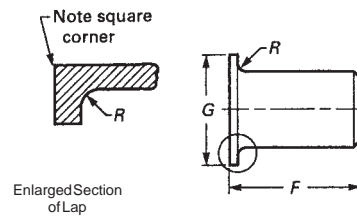
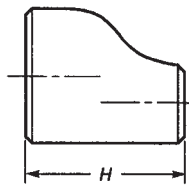
CAP



RETURN



REDUCE
R



Enlarged Section
of Lap

SECTION 11

FIRE & HVAC



Code

Description

Size

CARBON & STAINLESS STEEL BUTTWELDING FITTINGS • DIMENSIONS

SECTION 11

BUTTWELDING FITTINGS TO ASME B16.9															
NOMINAL SIZE		OD	ELBOWS			Returns				CAPS	REDUCERS NOTE 1	STUB ENDS			
			LONG	SHORT		LONG		SHORT				LONG	SHORT	RADIUS OF FILLET	DIME OF LAP
				90 DEG	64 DEG										
DN	NP8	D	A	B	A	O	K	O	K	E	H	F	F	R	G
15	1/2	21.3	38	16		76	40			25		76	51	3	35
20	3/4	25.7	38	19		76	51			25	38	76	51	3	43
25	1	33.4	38	22	25	76	56	51	41	38	51	102	51	3	51
32	1 1/4	42.2	48	25	32	95	70	64	52	38	51	102	51	5	64
40	1 1/2	48.3	57	29	38	114	83	76	62	38	64	102	51	6	73
50	2	60.3	76	35	51	152	106	102	81	38	76	152	64	8	92
65	2 1/2	73.0	95	44	64	190	132	127	100	38	89	152	64	8	106
80	3	88.9	114	51	76	229	159	152	121	51	89	152	64	10	127
90	3 1/2	101.6	133	57	89	267	184	178	140	64	102	152	76	10	140
100	4	114.3	152	64	102	305	210	203	159	64	102	152	76	11	157
125	5	141.3	190	79	127	381	262	254	197	76	127	203	76	11	185
150	6	168.3	229	95	152	457	313	305	237	89	140	203	89	13	210
200	8	219.1	305	127	203	610	414	406	313	102	152	203	102	13	270
250	10	273.0	381	159	254	762	516	508	391	127	178	254	127	13	334
300	12	325.8	457	190	305	914	619	610	457	152	203	254	152	13	381
350	14	355.6	533	222	356	1067	711	711	533	165	330	305	152	13	413
400	16	406.4	610	254	406	1219	813	813	610	178	356	305	152	13	470
450	18	457	686	286	457	1372	914	914	686	203	381	305	152	13	533
500	20	508	762	318	508	1524	1016	1016	762	229	508	305	152	13	594
550	22	558	838	343	559	1676	1118	1118	838	254	508	305	152	13	641
600	24	610	914	381	610	1829	1219	1219	914	267	508	305	152	13	692
650	26	660	991	406						267	610				
700	28	711	1067	438						267	610				
750	30	762	1143	470						267	610				
800	32	813	1219	502						267	610				
850	34	864	1295	533						267	610				
900	36	914	1372	565						267	610				
950	38	965	1448	600						305	610				
1000	40	1016	1524	632						305	610				
1050	42	1067	1600	660						305	610				
1100	44	1118	1676	695						343	610				
1150	46	1168	1753	727						343	711				
1200	48	1219	1829	759						343	711				

NOTE 1: REDUCER DIMENSION "H" IS BASED ON LARGE END NOMINAL SIZE

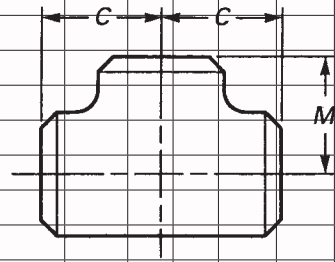
SECTION 11

FIRE & HVAC

SECTION 11

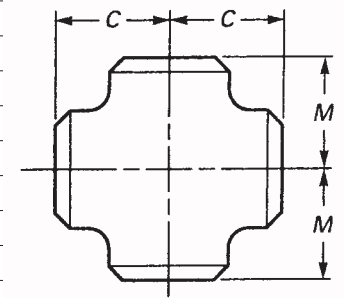
Code Description Size

Buttwelding Tees and Crosses to ASME B16.9																				
Nominal Size		Outside Diam.	Centre to-end Run	Centre-to-End Outlet M																
DN	NPS			D	C	8	10	15	20	25	32	40	50	65	80	90	100	125	150	200
8	3/8	13.7																		
10	1/4	17.3																		
15	1/2	21.3	25	25	25	25														
20	3/4	26.7	29		29	29	29													
25	1	33.4	38			38	38	38												
32	1 1/4	42.2	48			49	48	48	48											
40	1 1/2	48.3	57			57	57	57	57	57										
50	2	60.3	64				44	51	57	60	64									
65	2 1/2	73.0	76					57	64	67	70	76								
80	3	88.9	86						70	73	76	83	86							
90	3 1/2	101.6	95							79	83	89	92	95						
100	4	114.3	105								86	89	95	98	102	105				
125	5	141.3	124									105	108	111	114	117	124			
150	6	168.3	143										121	124	127	130	137	143		
200	8	219.1	178												152	156	162	168	178	
250	10	273.0	216													184	191	194	203	216
300	12	323.8	254														216	219	229	241
350	14	355.6	279															238	248	257
400	16	406.4	305															264	273	283
450	18	457	343																298	308
500	20	508	381																324	333
550	22	559	419																	359
600	24	610	432																	384
650	26	660	495																	
700	28	711	521																	
750	30	762	559																	460
800	32	813	597																	
850	34	864	635																	
900	36	914	673																	
950	38	965	711																	
1000	40	1016	749																	
1050	42	1067	762																	
1100	44	1118	813																	
1150	46	1168	851																	
1200	48	1219	889																	



Code Description Size

300	350	400	450	500	550	600	650	700	750	800	850	900	950	1000	1050	1100	1150	1200
254																		
270	279																	
295	305	305																
321	330	330	343															
346	356	356	368	381														
371	381	381	394	406	419													
397	406	406	419	432	432	432												
422	432	432	444	457	470	483	495											
448	457	457	470	483	495	508	521	521										
473	483	483	495	508	521	533	546	546	559									
	508	508	521	533	546	559	572	572	584	597								
		533	546	559	572	584	597	597	610	622	635							
		559	572	584	597	610	622	622	635	648	660	673						
			597	610	622	635	648	648	673	686	698	711	711					
			622	635	648	660	673	673	698	711	724	737	749	749				
		635	648	660	660	660	698	698	711	711	711	711	711	711	711			
				686	686	698	698	698	711	711	724	724	737	749	762	762		
					724	724	737	737	737	749	749	762	762	775	787	800	800	
					737	737	762	762	762	787	787	787	813	813	813	838	838	838



SECTION 11

SECTION 11

FIRE & HVAC



CARBON & STAINLESS STEEL BUTTWELDING FITTINGS • WEIGHTS

Code Description Size

Buttwelding Fittings (kgs per unit)																
Standard Weight																
NOMINAL SIZE		OD	ELBOWS			Returns		CAPS	REDUCERS	STUB ENDS		TEES	ELBOWS			
			LONG	SHORT		LONG	SHORT			MSS	ASME		LONG	SHORT		
DN	NPS	mm	90 DEG	45 DEG	90 DEG	LONG	SHORT					90 DEG	45 DEG	90 DEG		
15	1/2	21.3	0.08	0.04		0.16		0.04		0.12	0.14	0.09	0.10	0.05		
20	3/4	26.7	0.11	0.06		0.21		0.05	0.06	0.15	0.18	0.13	0.14	0.07		
25	1	33.4	0.16	0.08	0.11	0.31	0.21	0.11	0.12	0.19	0.3	0.25	0.20	0.10	0.14	
32	1 1/4	42.2	0.26	0.13	0.18	0.52	0.35	0.14	0.16	0.26	0.41	0.43	0.35	0.18	0.23	
40	1 1/2	48.3	0.37	0.19	0.25	0.74	0.49	0.17	0.25	0.38	0.55	0.61	0.50	0.25	0.33	
50	2	60.3	0.66	0.33	0.44	1.3	0.87	0.24	0.38	0.54	0.99	0.88	0.90	0.45	0.6	
65	2 1/2	73.0	1.29	0.69	0.91	2.73	1.82	0.42	0.73	0.8	1.56	1.74	1.79	0.90	1.19	
80	3	88.9	2.04	1.02	1.36	4.07	2.71	0.67	0.94	1.13	2.13	2.41	2.74	1.37	1.83	
90	3 1/2	101.6	2.94	1.47	1.97	5.65	3.77	0.92	1.19	1.47	2.58	3.26	4.05	2.02	2.07	
100	4	114.3	3.84	1.92	2.56	7.67	5.11	1.17	1.45	1.81	3.04	4.12	5.36	2.68	3.58	
125	5	141.3	6.48	3.24	4.32	13	8.64	1.9	2.5	2.53	5.3	6.54	9.13	4.57	6.09	
150	6	168.3	9.94	4.97	6.63	19.9	13.3	2.83	3.6	3.73	6.89	9.58	15	7.50	10	
200	8	219.1	20.1	10.1	13.4	40.3	26.8	5.11	5.7	5.89	10.42	17.9	30.5	15.3	20.3	
250	10	273.0	35.4	17.7	23.6	70.8	47.2	8.92	9.6	10.42	18.12	30.4	47.7	23.9	31.8	
300	12	323.8	52	26	34.6	112	71.9	13.1	13.6	14.9	22.2	43.6	68.7	34.4	45.8	
350	14	355.6	67.9	34	45.3			15.9	25.4	15.5	28.3	53.5	89.9	15	60	
400	16	406.4	89	44.5	59.1			20	31	18	32.7	66.1	118	59	78.3	
450	18	457	113	56.5	75.3			25.5	37.8	21	37.5	83.9	150	75.5	100	
500	20	508	140	70	93.1			31.8	55.4	23.3	41.7	104	186	93	124	
550	22	559	169	84.5	113			38.8	62.4	25.8	46.3	126	225	113	150	
600	24	610	202	101	135			45.1	68.4	28.4	50.5	139	268	134	179	
650	26	660	237	119	158			50.5	89.4			176	315	158	210	
700	28	711	276	138	184			56.2	96.6			198	367	184	245	
750	30	762	316	158	211			62.1	104			228	421	211	281	
800	32	813	361	180	241			68.4	111			259	480	240	320	
850	34	864	406	204	272			75.4	116			295	543	272	362	
900	36	914	457	228	304			81.9	125			331	608	304	405	
950	38	965	510	255	340			94.7	133			370	679	339	453	
1000	40	1016	565	282	377			102	140			411	753	376	502	
1050	42	1067	622	311	416			110	147			422	828	414	554	
1100	44	1118	684	342	456			126	155			475	912	456	608	
1150	46	1168	748	374	499			134	189			521	997	498	665	
												569				

Note 1: All weights are approximate
 Note 2: Weights shown are based on carbon steel.
 Note 3: As a guide to stainless steel fittings weight use carbon steel Standard Weight for Sch 40S and carbon steel XS for Sch 80S

SECTION 11

FIRE & HVAC



Code

Description

Size

XS														Sch 160				
RETURNS			CAPS	REDUCERS	STUB ENDS		TEES	ELBOWS			Caps	REDUCERS	TEES					
LONG	SHORT	MSS			ASME	LONG		SHORT										
						90 DEG		45 DEG	90 DEG									
0.20		0.05		0.13	0.12	0.11	0.12			0.06		0.12						
0.21		0.07	0.08	0.17	0.2	0.17	0.13			0.09		0.21						
0.41	0.26	0.15	0.15	0.24	0.38	0.32	0.25	0.13	0.17	0.2	0.19	0.41						
0.70	0.46	0.20	0.21	0.35	0.55	0.56	0.42	0.21	0.28	0.25	0.25	0.69						
1.02	0.66	0.24	0.33	0.46	0.68	0.81	0.65	0.33	0.43	0.35	0.43	1.07						
1.88	1.19	0.33	0.51	0.74	1.36	1.2	1.33	0.67	0.89	0.54	0.75	1.78						
3.56	2.38	0.57	0.95	1.06	2.08	2.28	2.33	1.17	1.49	0.77	1.2	2.86						
5.74	3.65	0.92	1.25	1.51	2.84	3.25	3.83	1.92	2.55	1.4	1.71	4.55						
12.72	5.21	1.3	1.64	2.01	3.51	4.51	5.92	2.96	3.95	2.1	2.35	6.52						
15.76	7.15	1.68	2.02	2.52	4.23	5.77	8.02	4.01	5.35	2.76	3	8.5						
19.39	12.2	2.73	3.52	3.6	7.52	9.2	14.7	7.35	9.79	4.85	5.59	14.8						
31.98	20	4.38	5.38	5.57	10.42	14.5	24.2	12.1	16.2	7.81	8.63	23.3						
64.33	40.7	7.91	8.63	10.12	15.86	27.1	53.2	26.6	35.5	15.2	15	47.2						
99.66	74.9	12.2	12.9	13.95	24.28	41	103	51.5	68.6	28.9	27.5	88						
144.96	94.9	17.4	18	19.93	29.81	57.7	171	85.5	114	47.7	44.6	143						
		21.2	33.6	21	38	70.9	236	118	158	61.2	88.5	186						
		26.7	41.1	24	44	87.7	350	175	234	92.8	121	260						
		34.1	50.1	28	50	111	495	247	330	131	165	356						
		42.5	74.9	31	56	138	676	338	451	179	233	502						
		51.7	82.9	33	61	167	886	443	591	219		657						
		60.1	91	37	67	186	1160	580	773	307		800						
		67.3	119			234												
		74.9	129			264												
		82.8	138			304												
		91.2	148			347												
		100	158			393												
		109	167			441												
		126	177			493												
		137	187			547												
		147	196			562												
		167	206			633												
		179	252			695												

SECTION 11

Code Description Size

FLANGES

BLACK STEEL FLANGES

SLIP ON FLANGE - PN 16 FLANGE

BS-PSF-PN16-40	40mm
BS-PSF-PN16-50	50mm
BS-PSF-PN16-65	65mm
BS-PSF-PN16-80	80mm
BS-PSF-PN16-100	100mm
BS-PSF-PN16-125	125mm
BS-PSF-PN16-150	150mm
BS-PSF-PN16-200	200mm
BS-PSF-PN16-250	250mm
BS-PSF-PN16-300	300mm
BS-PSF-PN16-350	350mm
BS-PSF-PN16-400	400mm
BS-PSF-PN16-450	450mm
BS-PSF-PN16-500	500mm
BS-PSF-PN16-600	600mm



SLIP ON FLANGE - TABLE E FLANGE

BS-PSF-TE-40	40mm
BS-PSF-TE-50	50mm
BS-PSF-TE-65	65mm
BS-PSF-TE-80	80mm
BS-PSF-TE-100	100mm
BS-PSF-TE-125	125mm
BS-PSF-TE-150	150mm
BS-PSF-TE-200	200mm
BS-PSF-TE-250	250mm
BS-PSF-TE-300	300mm
BS-PSF-TE-350	350mm
BS-PSF-TE-400	400mm
BS-PSF-TE-450	450mm
BS-PSF-TE-500	500mm
BS-PSF-TE-600	600mm



BLACK STEEL BLIND FLANGES

PN16 FLANGE	
BLIND-PN16-40	40mm
BLIND-PN16-50	50mm
BLIND-PN16-65	65mm
BLIND-PN16-80	80mm
BLIND-PN16-100	100mm
BLIND-PN16-125	125mm

SECTION 11
FIRE & HVAC

Code	Description	Size
BLIND-PN16-150		150mm
BLIND-PN16-200		200mm
BLIND-PN16-250		250mm
BLIND-PN16-300		300mm
BLIND-PN16-350		350mm
BLIND-PN16-400		400mm
BLIND-PN16-450		450mm
BLIND-PN16-500		500mm
BLIND-PN16-600		600mm

TABLE E FLANGE

BLIND-TE-40	40mm
BLIND-TE-50	50mm
BLIND-TE-65	65mm
BLIND-TE-80	80mm
BLIND-TE-100	100mm
BLIND-TE-125	125mm
BLIND-TE-150	150mm
BLIND-TE-200	200mm
BLIND-TE-250	250mm
BLIND-TE-300	300mm
BLIND-TE-350	350mm
BLIND-TE-400	400mm
BLIND-TE-450	450mm
BLIND-TE-500	500mm
BLIND-TE-600	600mm

Code	Description	Size
COPAMATE COPPER FLANGE ADAPTORS		
Electrolysis protection system built into the coating of the flange (rubber gaskets not required)		
PN16 FLANGE CU BRAZING ADAPTORS		
FA-32PN16		32mm
FA-40PN16		40mm
FA-50PN16		50mm
FA-65PN16		65mm
FA-80PN16		80mm
FA-100PN16		100mm
FA-125PN16		125mm
FA-150PN16		150mm
FA-200PN16		200mm
TABLE E FLANGE CU BRAZING ADAPTORS		
FA-32TE		32mm
FA-40TE		40mm
FA-50TE		50mm
FA-65TE		65mm
FA-80TE		80mm
FA-100TE		100mm
FA-125TE		125mm
FA-150TE		150mm
FA-200TE		200mm
<i>* Contact Sales for all other Sizes, Flanges or Styles of Copamate Adaptors</i>		
PN16 ROLL GROOVE X FLANGE CU ADAPTORS		
FA-RG32PN16		32mm
FA-RG40PN16		40mm
FA-RG50PN16		50mm
FA-RG65PN16		65mm
FA-RG80PN16		80mm
FA-RG100PN16		100mm
FA-RG125PN16		125mm
FA-RG150PN16		150mm
FA-RG200PN16		200mm
TABLE E ROLL GROOVE X FLANGE CU ADAPTORS		
FA-RG32TE		32mm
FA-RG40TE		40mm
FA-RG50TE		50mm
FA-RG65TE		65mm
FA-RG80TE		80mm
FA-RG100TE		100mm
FA-RG125TE		125mm
FA-RG150TE		150mm
FA-RG200TE		200mm



Code **Description** **Size**

* Contact Sales for all other Sizes, Flanges or Styles of Copamate Adaptors

GASKETS, SEALS AND FASTENERS

GASKETS

- Commercial grade general purpose gasket material. Suitable for gases, oils, lubricants, fuels, air and water
- Temperature Maximum to 180°C
- Pressure - 40 Bar

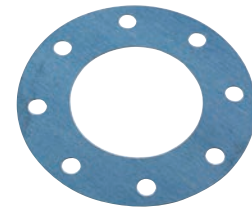
FIBRE FULL FACE GASKET PN16 5MM THICKNESS

FGASK-32-PN16	32mm
FGASK-40-PN16	40mm
FGASK-50-PN16	50mm
FGASK-65-PN16	65mm
FGASK-80-PN16	80mm
FGASK-100-PN16	100mm
FGASK-125-PN16	125mm
FGASK-150-PN16	150mm
FGASK-200-PN16	200mm
FGASK-250-PN16	250mm
FGASK-300-PN16	300mm



FIBRE FULL FACE GASKET TABLE E 5MM THICKNESS

FGASK-32-TE	32mm
FGASK-40-TE	40mm
FGASK-50-TE	50mm
FGASK-65-TE	65mm
FGASK-80-TE	80mm
FGASK-100-TE	100mm
FGASK-125-TE	125mm
FGASK-150-TE	150mm
FGASK-200-TE	200mm
FGASK-250-TE	250mm
FGASK-300-TE	300mm



RUBBER GASKETS

- Natural Rubber Gaskets for Water Services
- Max Temperature to 70C
- Table E

RGASK-65-TE	65mm
RGASK-80-TE	80mm
RGASK-100-TE	100mm
RGASK-150-TE	150mm
RGASK-200-TE	200mm

*Additional Gaskets available including EPDM, Neoprene, Nitrile, Potable Water with EPDM. Contact Sales for all enquiries.

SECTION 11

FIRE & HVAC

SECTION 11

Code Description Size

FIRE OVERHAUL KITS

SPRINKLER CONTROL VALVE OVERHAUL KITS

Overhaul Kits available for all Brands. Contact Sales for pricing.

DELUGE VALVE OVERHAUL KITS

Overhaul Kits available for all Brands. Contact Sales for pricing.

FASTENERS

HEX BOLTS WITH NUTS PC4.6 - ZINC PLATED

BOLT&NM12-40	M12 x 40mm
BOLT&NM12-50	M12 x 50mm
BOLT&NM16-50	M16 x 50mm
BOLT&NM16-60	M16 x 60mm
BOLT&NM16-65	M16 x 65mm
BOLT&NM16-70	M16 x 70mm
BOLT&NM16-75	M16 x 75mm
BOLT&NM16-80	M16 x 80mm
BOLT&NM16-90	M16 x 90mm
BOLT&NM16-100	M16 x 100mm
BOLT&NM16-110	M16 x 110mm
BOLT&NM20-70	M20 x 70mm
BOLT&NM20-75	M20 x 75mm
BOLT&NM20-80	M20 x 80mm
BOLT&NM20-90	M20 x 90mm
BOLT&NM20-100	M20 x 100mm
BOLT&NM20-110	M20 x 110mm
BOLT&NM20-120	M20 x 120mm



HEX BOLTS AND NUTS - GALVANISED

BOLT&NGM12-40	M12 x 40mm
BOLT&NGM12-50	M12 x 50mm
BOLT&NGM16-50	M16 x 50mm
BOLT&NGM16-60	M16 x 60mm
BOLT&NGM16-65	M16 x 65mm
BOLT&NGM16-70	M16 x 70mm
BOLT&NGM16-75	M16 x 75mm
BOLT&NGM16-80	M16 x 80mm
BOLT&NGM16-90	M16 x 90mm
BOLT&NGM16-100	M16 x 100mm



Code	Description	Size
BOLT&NGM16-110		M16 x 110mm
BOLT&NGM20-70		M20 x 70mm
BOLT&NGM20-75		M20 x 75mm
BOLT&NGM20-80		M20 x 80mm
BOLT&NGM20-90		M20 x 90mm
BOLT&NGM20-100		M20 x 100mm
BOLT&NGM20-110		M20 x 110mm

***Contact Sales for all other Fastener enquiries**

LIGHT, MEDIUM & HEAVY PIPE

“ERW Galvanized and Primed Steel tubes and tubulars for ordinary service have been manufactured according to Australian Standard AS: 1074. “

ERW Galvanized Light Pipe Conforms to AS: 1074 and AS2419.1 Hydrant Standard.

Standard Lengths: Light - 6.0 metres and Medium - 6.5 metres. * 25mm-50mm Med available in half lengths one end Grooved / Threaded 3.25m.

LIGHT WALL HYDRANT PIPE (AS2419 AS1074) FOR DESIGNATED FIRE HYDRANT SYSTEMS

- Galvanised Pipe - Grooved Light Wall Hydrant Pipe
- Approvals: ActivFire, UL and FM

PIPE-HYLGRG-100	100mm
PIPE-HYLGRG-150	150mm (165.1OD)
PIPE-HYLGRG-200	200mm

MEDIUM WALL PIPE - GALVANISED AND PRIMED FOR FIRE SPRINKLER AND HYDRANT SYSTEMS

- Galvanised Pipe - Grooved B/E Medium Wall

PIPE-HYMGRG-25	25mm
PIPE-HYMGRG-32	32mm
PIPE-HYMGRG-40	40mm
PIPE-HYMGRG-50	50mm
PIPE-HYMGRG-65	65mm (76.1od)
PIPE-HYMGRG-80	80mm
PIPE-HYMGRG-100	100mm
PIPE-HYMGRG-150	150mm (165.1OD)
PIPE-HYMGRG-200	200mm

PRIMED PIPE - GROOVED ONE END

PIPE-HYMPRG1-50	50mm
PIPE-HYMPRG1-65	65mm (76.1od)
PIPE-HYMPRG1-80	80mm
PIPE-HYMPRG1-100	100mm
PIPE-HYMPRG1-150	150mm (165.1OD)
PIPE-HYMPRG1-200	200mm

SECTION 11 FIRE & HVAC

Code	Description	Size
GALVANISED PIPE THREADED B/E		
PIPE-MGTHD-25		25mm
PIPE-MGTHD-32		32mm
PIPE-MGTHD-40		40mm
PIPE-MGTHD-50		50mm
PRIMED PIPE - THREADED ONE END		
PIPE-HYMPTHD1-25		25mm
PIPE-HYMPTHD1-32		32mm
PIPE-HYMPTHD1-40		40mm
PIPE-HYMPTHD1-50		50mm
GALVANISED PIPE THREADED ONE END 3.25M LENGTH		
PIPE-MGTHD-25H		25mm
PIPE-MGTHD-32H		32mm
PIPE-MGTHD-40H		40mm
PIPE-MGTHD-50H		50mm
PRIMED PIPE THREADED ONE END 3.25M LENGTH		
PIPE-MPTHDD-25H		25mm
PIPE-MPTHDD-32H		32mm
PIPE-MPTHDD-40H		40mm
PIPE-MPTHDD-50H		50mm
MEDIUM WALL STEEL PIPES (AS1074) FOR GENERAL MECHANICAL AND LOW PRESSURE RETICULATION APPLICATIONS		
BLACK STEEL MEDIUM PIPE 6.5M L PLAIN ENDS		
PIPE-MP-BLK-40	PIPE BLACK MEDIUM C250 40mm 6.5mL PE	40mm
PIPE-MP-BLK-50	PIPE BLACK MEDIUM C250 50mm 6.5mL PE	50mm
PIPE-MP-BLK-65A	PIPE BLACK MEDIUM C250 65mm 76.1OD 6.5mL PE	65mm (76.1od)
PIPE-MP-BLK-80	PIPE BLACK MEDIUM C250 80mm 6.5mL PE	80mm
PIPE-MP-BLK-100	PIPE BLACK MEDIUM C250 100mm 6.5mL PE	100mm
PIPE-MP-BLK-150A	PIPE BLACK MEDIUM C250 150mm 165.1OD 6.5mL PE	150mm (165.1OD)
PIPE-MP-BLK-200	PIPE BLACK MEDIUM C250 200mm 6.5mL PE	200mm
PIPE-MP-BLK-250	PIPE BLACK MEDIUM C250 250mm 6.5mL PE	250mm
PIPE-MP-BLK-300	PIPE BLACK MEDIUM C250 300mm 6.5mL PE	300mm

* For enquiries relating to C250 Heavy, C350 Light and Extra Light Pipes please contact Sales

SECTION 11

FIRE & HVAC

AS1074/AS1163 CHS PIPE SIZE AND WEIGHT

Size (mm) NB	Weight Class	OD mm	Wall Thickness mm	KG per Metre	Pieces Per BDL	STD Length (M)	Bundle Weight (MT)
15	L	21.3	2	0.947	217	6.5	1.336
15	M	21.3	2.6	1.21	217	6.5	1.707
15	H	21.3	3.2	1.44	217	6.5	2.031
20	XL	26.9	2	1.23	127	6.5	1.015
20	L	26.9	2.3	1.38	127	6.5	1.139
20	M	26.9	2.6	1.56	127	6.5	1.288
20	H	26.9	3.2	1.87	127	6.5	1.544
25	XL	33.7	2	1.56	91	6.5	0.923
25	L	33.7	2.6	1.98	91	6.5	1.171
25	M	33.7	3.2	2.41	91	6.5	1.426
25	H	33.7	4	2.94	91	6.5	1.739
32	XL	42.4	2	1.99	91	6.5	1.177
32	L	42.4	2.6	2.54	91	6.5	1.502
32	M	42.4	3.2	3.1	61	6.5	1.229
32	H	42.4	4	3.8	61	6.5	1.507
40	XL	48.3	2.3	2.61	61	6.5	1.035
40	L	48.3	2.9	3.23	61	6.5	1.281
40	M	48.3	3.2	3.57	61	6.5	1.416
40	H	48.3	4	4.38	61	6.5	1.737
40	XH	48.3	5.4	5.71	61	6.5	2.264
50	XL	60.3	2.3	3.29	37	6.5	0.791
50	L	60.3	2.9	4.08	37	6.5	0.981
50	M	60.3	3.6	5.03	37	6.5	1.210
50	H	60.3	4.5	6.19	37	6.5	1.489
50	XH	60.3	5.4	7.31	37	6.5	1.758
65	XL	76.1	2.3	4.19	37	6.5	1.008

SECTION 11

FIRE & HVAC

Code **Description** **Size**

SCHEDULE AND STANDARD WEIGHT PIPE: ERW

Specifications: API 5L, 5LX / ASTM A53, A135 A252, A333

ERW BLACK STEEL PIPE - SCHEDULE 20 PLAIN END (12M L)

PIPE-SCH20-BLK-40	40mm (48.3)
PIPE-SCH20-BLK-50	50mm (60.3)
PIPE-SCH20-BLK-65	65mm (73.0)
PIPE-SCH20-BLK-80	80mm (88.9)
PIPE-SCH20-BLK-100	100mm (114.3)
PIPE-SCH20-BLK-125	125mm (141.3)
PIPE-SCH20-BLK-150	150mm (168.3)
PIPE-SCH20-BLK-200	200mm (219.1)
PIPE-SCH20-BLK-250	250mm (273.0)
PIPE-SCH20-BLK-300	300mm (323.9)
PIPE-SCH20-BLK-350	350mm (355.6)
PIPE-SCH20-BLK-400	400mm (406.4)
PIPE-SCH20-BLK-450	450mm (457.2)

* FOR 500MM AND 600MM SCH20 PIPE - USE STD WEIGHT CODE BELOW (SAME WALL THICKNESS)

ERW BLACK STEEL PIPE - STANDARD WEIGHT PLAIN END (12M L)

PIPE-ERW-BLK-40	40mm (48.3)
PIPE-ERW-BLK-50	50mm (60.3)
PIPE-ERW-BLK-65	65mm (73.0)
PIPE-ERW-BLK-80	80mm (88.9)
PIPE-ERW-BLK-100	100mm (114.3)
PIPE-ERW-BLK-125	125mm (141.3)
PIPE-ERW-BLK-150	150mm (168.3)
PIPE-ERW-BLK-200	200mm (219.1)
PIPE-ERW-BLK-250	250mm (273.0)
PIPE-ERW-BLK-300	300mm (323.9)
PIPE-ERW-BLK-350	350mm (355.6)
PIPE-ERW-BLK-400	400mm (406.4)
PIPE-ERW-BLK-450	450mm (457.2)
PIPE-ERW-BLK-500	500mm (508.0)
PIPE-ERW-BLK-600	600mm (610.0)

ERW BLACK STEEL PIPE - SCHEDULE 40 PLAIN END (12M L)

40MM - 250MM SCHEDULE 40 - REFER TO STANDARD WEIGHT SECTION AND CODES

PIPE-SCH40-BLK-300	300mm (323.9)
PIPE-SCH40-BLK-350	350mm (355.6)
PIPE-SCH40-BLK-400	400mm (406.4)
PIPE-SCH40-BLK-450	450mm (457.2)
PIPE-SCH40-BLK-500	500mm (508.0)
PIPE-SCH40-BLK-600	600mm (610.0)

Code	Description	Size
ERW BLACK STEEL PIPE - SCHEDULE 80 PLAIN END (12M L)		
PIPE-SCH80-BLK-40		40mm (48.3)
PIPE-SCH80-BLK-50		50mm (60.3)
PIPE-SCH80-BLK-65		65mm (73.0)
PIPE-SCH80-BLK-80		80mm (88.9)
PIPE-SCH80-BLK-100		100mm (114.3)
PIPE-SCH80-BLK-125		125mm (141.3)
PIPE-SCH80-BLK-150		150mm (168.3)
PIPE-SCH80-BLK-200		200mm (219.1)
PIPE-SCH80-BLK-250		250mm (273.0)
PIPE-SCH80-BLK-300		300mm (323.9)
PIPE-SCH80-BLK-350		350mm (355.6)
PIPE-SCH80-BLK-400		400mm (406.4)
PIPE-SCH80-BLK-450		450mm (457.2)

* For enquiries relating to X-STRONG (XS), XX-STRONG (XXS) and other Schedules (5,10, 100, 120, 140 or 160) Contact Sales

SCHEDULE AND STANDARD WEIGHT PIPE - SEAMLESS

SEAMLESS BLACK STEEL PIPE - SCHEDULE 20 Plain End 12M L

PIPE-SCH20-SM-40		40mm
PIPE-SCH20-SM-50		50mm
PIPE-SCH20-SM-65		65mm
PIPE-SCH20-SM-80		80mm
PIPE-SCH20-SM-100		100mm
PIPE-SCH20-SM-125		125mm
PIPE-SCH20-SM-150		150mm
PIPE-SCH20-SM-200		200mm
PIPE-SCH20-SM-250		250mm
PIPE-SCH20-SM-300		300mm
PIPE-SCH20-SM-350		350mm
PIPE-SCH20-SM-400		400mm
PIPE-SCH20-SM-450		450mm

* FOR 500MM AND 600MM SCH20 PIPE - USE STD WEIGHT CODE BELOW (SAME WALL THICKNESS)

SEAMLESS BLACK STEEL PIPE - STANDARD WEIGHT Plain End 12M L

PIPE-SM-BLK-40		40mm (48.3)
PIPE-SM-BLK-50		50mm (60.3)
PIPE-SM-BLK-65		65mm (73.0)
PIPE-SM-BLK-80		80mm (88.9)
PIPE-SM-BLK-100		100mm (114.3)
PIPE-SM-BLK-125		125mm (141.3)
PIPE-SM-BLK-150		150mm (168.3)
PIPE-SM-BLK-200		200mm (219.1)
PIPE-SM-BLK-250		250mm (273.0)
PIPE-SM-BLK-300		300mm (323.9)
PIPE-SM-BLK-350		350mm (355.6)

SECTION 11

FIRE & HVAC

SECTION 11

Code	Description	Size
PIPE-SM-BLK-400		400mm (406.4)
PIPE-SM-BLK-450		450mm (457.2)
PIPE-SM-BLK-500		500mm (508.0)
PIPE-SM-BLK-600		600mm (610.0)

SEAMLESS BLACK STEEL PIPE - SCHEDULE 40 PLAIN END 12M L

40MM - 250MM SCHEULE 40 - REFER TO STANDARD WEIGHT SECTION AND CODES

PIPE-SCH40-SM-300		300mm (323.9)
PIPE-SCH40-SM-350		350mm (355.6)
PIPE-SCH40-SM-400		400mm (406.4)
PIPE-SCH40-SM-450		450mm (457.2)
PIPE-SCH40-SM-500		500mm (508.0)
PIPE-SCH40-SM-600		600mm (610.0)

**For enquiries relating to X-STRONG (XS), XX-STRONG (XXS) and other Schedules (5,10, 80, 100, 120, 140 or 160) please contact Sales*

SECTION 11

DIMENSIONS SHOWN ARE TO ASME B36.10

Nominal Size		Outside Diameter mm (inch)	Wall Thickness mm	Inside Diameter mm	Plain End Mass kg/m	Identification	
★ NPS	⊕ DN					Standard (STD) X-Strong (XS) XX-Strong (XXS)	Schedule Number
1/8	6	10.3 (0.405)	1.73	6.8	0.37	STD	40
			2.41	5.5	0.47	XS	80
1/4	8	13.7 (0.540)	2.24	9.2	0.63	STD	40
			3.02	7.7	0.80	XS	80
3/8	10	17.1 (0.675)	2.31	12.5	0.84	STD	40
			3.20	10.7	1.10	XS	80
1/2	15	21.3 (0.840)	2.77	15.8	1.27	STD	40
			3.73	13.9	1.62	XS	80
			4.78	11.8	1.95	-	160
			7.47	6.4	2.55	XXS	-
3/4	20	26.7 (1.050)	2.87	20.9	1.69	STD	40
			3.91	18.9	2.20	XS	80
			5.56	15.5	2.90	-	160
			7.82	11.0	3.64	XXS	-
1	25	33.4 (1.315)	3.38	26.6	2.50	STD	40
			4.55	24.3	3.24	XS	80
			6.35	20.7	4.24	-	160
			9.09	15.2	5.45"	XXS	-
1 1/4	32	42.2 (1.660)	3.56	35.1	3.39	STD	40
			4.85	32.5	4.47	XS	80
			6.35	29.5	5.61	-	160
			9.70	22.8	7.77	XXS	-
1 1/2	40	48.3 (1.900)	3.68	40.9	4.05	STD	40
			5.08	38.1	5.41	XS	80
			7.14	34.0	7.25	-	160
			10.15	27.9	9.55	XXS	-
2	50	60.3 (2.375)	3.91	52.5	5.44	STD	40
			5.54	49.2	7.48	XS	80
			8.74	42.9	11.11	-	160
			11.07	38.2	13.44	XXS	-
2 1/2	65	73.0 (2.875)	5.16	62.7	8.63	STD	40
			7.01	59.0	11.41	XS	80
			9.53	54.0	14.92	-	160
			14.02	45.0	20.39	XXS	-

★NPS: ASME term. ⊕DN: SI Metric term.

All dimensions are nominal

NOTE: API and BS 1600 are dimensionally similar to ASME B36.10

FORMULA TO ATTAIN APPROXIMATE MASS IN KILOGRAMS PER METRE (kg/m) FOR STEEL ROUND PIPE AND TUBING $M = (D - T) T \times 0.02466$

Where: m = mass to the nearest 0.01 kg/m.

D = Outside Diameter in millimetres (mm).

(To nearest 0.1mm for O.D. up to 406.4mm)

(To nearest 1.0mm for O.D. 457mm and above)

t = Wall Thickness to nearest 0.01mm

EXAMPLE

NOMINAL SIZE: NPS-12. DN-300

O.D. = 323.9mm W.T. = 9.53mm

Step 1. $323.9 - 9.53 = 314.37$

Step 2. $314.37 \times 9.53 = 2995.9461$

Step 3. $2995.9461 \times 0.02466 = 73.88 \text{ kg/m}$

SECTION 11

FIRE & HVAC

SECTION 11

Nominal Size		Outside Diameter mm (inch)	Wall Thickness mm	Inside Diameter mm	Plain End Mass kg/m	Identification	
★ NPS	⊕ DN					Standard (STD) X-Strong (XS) XX-Strong (XXS)	Schedule Number
3	80	88.9 (3.500)	5.49	77.9	11.29	STD	40
			7.62	73.7	15.27	XS	80
			11.13	66.7	21.35	–	160
			15.24	58.4	27.68	XXS	–
3 1/2	90	101.6 (4.000)	5.74	90.1	13.57	STD	40
			8.08	85.4	18.64	XS	80
4	100	114.3 (4.500)	6.02	102.3	16.08	STD	40
			8.56	97.2	22.32	XS	80
			11.13	92.1	28.32	–	120
			13.49	87.3	33.54	–	160
			17.12	80.1	41.03	XXS	–
5	125	141.3 (5.563)	6.55	128.2	21.77	STD	40
			9.53	122.3	30.97	XS	80
			12.70	115.9	40.28	–	120
			15.88	109.6	49.12	–	160
			19.05	103.2	57.43	XXS	–
6	150	168.3 (6.625)	7.11	154.1	28.26	STD	40
			10.97	146.3	42.56	XS	80
			14.27	139.7	54.21	–	120
			18.26	131.8	67.57	–	160
			21.95	124.4	79.22	XXS	–
8	200	219.1 (8.625)	6.35	206.4	33.32	–	20
			7.04	205.0	36.82	–	30
			8.18	202.7	42.55	STD	40
			10.31	198.5	53.09	–	60
			12.70	193.7	64.64	XS	80
			15.09	188.9	75.92	–	100
			18.26	182.6	90.44	–	120
			20.62	177.8	100.93	–	140
			22.23	174.6	107.93	XXS	–
			23.01	173.1	111.27	–	160
10	250	273.1 (10.75)	6.35	260.3	41.76	–	20
			7.80	257.5	51.01	–	30
			9.27	254.5	60.29	STD	40
			12.70	247.7	81.53	XS	60
			15.09	242.9	95.98	–	80
			18.26	236.5	114.71	–	100
			21.44	230.2	133.01	–	120
			25.40	222.3	155.10	XXS	140
			28.58	215.9	172.27	–	160

SECTION 11

FIRE & HVAC



Nominal Size		Outside Diameter mm (inch)	Wall Thickness mm	Inside Diameter mm	Plain End Mass kg/m	Identification	
★ NPS	⊕ DN					"Standard (STD) X-Strong (XS) XX-Strong (XXS)"	Schedule Number
12	300	323.9 (12.75)	6.35	311.1	49.71	-	20
			8.38	307.1	65.19	-	30
			9.53	304.8	73.86	STD	-
			10.31	303.2	79.71	-	40
			12.70	298.5	97.44	XS	-
			14.27	295.3	108.93	-	60
			17.48	288.9	132.05	-	80
			21.44	281.0	159.87	-	100
			25.40	273.1	186.92	XXS	120
			28.58	266.7	208.08	-	140
			33.32	257.2	238.69	-	160
14	350	355.6 (14.00)	6.35	342.9	54.69	-	10
			7.92	339.8	67.91	-	20
			9.53	336.6	81.33	STD	30
			11.13	333.3	94.55	-	40
			11.91	331.8	100.95	-	-
			12.70	330.2	107.40	XS	-
			15.09	325.4	126.72	-	60
			19.05	317.5	158.11	-	80
			23.83	307.9	194.98	-	100
			27.79	300.0	224.66	-	120
			31.75	292.1	253.58	-	140
35.71	284.2	281.72	-	160			
16	400	406.4 (16.00)	6.35	393.7	62.65	-	10
			7.92	390.6	77.83	-	20
			9.53	387.4	93.27	STD	30
			12.70	381.0	123.31	XS	40
			16.66	373.1	160.13	-	60
			21.44	363.5	203.54	-	80
			26.19	354.0	245.57	-	100
			30.96	344.5	286.66	-	120
			36.53	333.3	333.21	-	140
			40.49	325.4	365.38	-	160
			18	450	457 (18.00)	6.35	444.5
7.92	441.4	87.71				-	20
9.53	438.2	105.17				STD	-
11.13	434.9	122.38				-	30
12.70	431.8	139.16				XS	-
14.27	428.7	155.81				-	40
19.05	419.1	205.75				-	60
23.83	409.5	254.57				-	80
29.36	398.5	309.64				-	100
34.93	387.4	363.58				-	120
39.67	377.9	408.28				-	140
45.24	366.7	459.39	-	160			

SECTION 11

SECTION 11

FIRE & HVAC

SECTION 11

Nominal Size		Outside Diameter mm (inch)	Wall Thick- ness mm	Inside Diameter mm	Plain End Mass kg/m	Identification	
★ NPS	⊕ DN					"Standard (STD) X-Strong (XS) XX-Strong (XXS)"	Schedule Number
20	500	508 (20.00)	6.35	495.3	78.56	-	10
			9.53	489.0	117.15	STD	20
			12.70	482.6	155.13	XS	30
			15.09	477.8	183.43	-	40
			20.62	466.8	247.84	-	60
			26.19	455.6	311.19	-	80
			32.54	442.9	381.55	-	100
			38.10	431.8	441.52	-	120
			44.45	419.1	508.15	-	140
			50.01	408.0	564.85	-	160
22	550	559 (22.00)	6.35	546.1	86.55	-	10
			9.53	539.8	129.14	STD	20
			12.70	533.4	171.10	XS	30
			22.23	514.4	294.27	-	60
			28.58	501.7	373.85	-	80
			34.93	489.0	451.45	-	100
			41.28	476.2	527.05	-	120
			47.63	463.5	600.67	-	140
			53.98	450.8	672.30	-	160
			24	600	610 (24.00)	6.35	596.9
9.53	590.6	141.12				STD	20
12.70	584.2	187.07				XS	-
14.27	581.1	209.65				-	30
17.48	574.6	255.43				-	40
24.61	560.4	355.28				-	60
30.96	547.7	442.11				-	80
38.89	531.8	547.74				-	100
46.02	517.6	640.07				-	120
52.37	504.9	720.19				-	140
59.54	490.5	808.27	-	160			
26	650	660 (26.00)	7.92	644.6	127.36	-	10
			9.53	641.4	152.88	STD	-
			12.70	635.0	202.74	XS	20
28	700	711 (28.00)	7.92	695.4	137.32	-	10
			9.53	692.2	164.86	STD	-
			12.70	685.8	218.71	XS	20
			15.88	679.5	271.23	-	30
30	750	762 (30.00)	7.92	746.2	147.29	-	10
			9.53	743.0	176.85	STD	-
			12.70	736.6	234.68	XS	20
			15.88	730.2	292.20	-	30
36	900	914 (36.00)	7.92	898.6	176.97	-	10
			9.53	895.4	212.57	STD	-
			12.70	889.0	282.29	XS	20
			15.88	882.6	351.73	-	30
			19.05	876.3	420.45	-	40
42	1050	1067 (42.00)	9.53	1047.8	248.53	STD	-
			12.70	1041.4	330.21	XS	-

SECTION 11

FIRE & HVAC

PRESSURE/TEMPERATURE RATINGS											
SEAMLESS CARBON STEEL PIPE. GRADE B, with plain ends. ASTM A106, API 5L & ASTM A53											
Nominal Size DN MM	Temp. °C ▶			-29 to 38	205	260	350	370	400	430	450
	Stress (SE) in kPa ▶			137800	137800	130221	117130	115752	89570	74412	59943
	Wall Thickness			"MAXIMUM ALLOWABLE PRESSURE/TEMPERATURE RATINGS IN kPa FOR CHEMICAL PLANT AND PETROLEUM REFINERY PIPING SYSTEMS TO ANSI/ASME B31.3a — 1981"							
	Sched. No.	mm									
15	STD	40	2.77	34416	34416	32528	29255	28910	22372	18589	14972
	XS	80	3.73	48092	48092	45446	40878	40396	31260	25969	20918
		160	4.78	62830	62830	59378	53404	52777	40837	33926	27333
	XXS		7.47	98245	98245	92836	83507	82522	63857	53053	42739
20	STD	40	2.87	28070	28070	26526	23860	23578	18245	15158	12209
	XS	80	3.91	39418	39418	37247	33506	33106	25617	21283	17142
		160	5.56	58152	58152	54955	49429	48843	37799	31398	25293
	XXS		7.82	83107	83107	78539	70643	69809	54024	44881	36152
25	STD	40	3.38	26251	26251	24804	22310	22048	17060	14173	11417
	XS	80	4.55	36283	36283	34285	30862	30474	23584	19595	15785
		160	6.35	52481	52481	49594	44606	44082	34112	28339	22827
	XXS		9.09	77030	77030	72793	65476	64704	50070	41595	33506
32	STD	40	3.56	21614	21614	20421	18369	18155	14049	11672	9404
	XS	80	4.85	30178	30178	28518	25651	25348	19616	16295	13125
		160	6.35	40596	40596	38364	34505	34099	26389	21924	17659
	XXS		9.70	64601	64601	61045	54906	54266	41988	34884	28097
40	ST	40	3.68	19444	19444	18375	16529	16329	12636	10500	8454
	XS	80	5.08	27402	27402	25900	23295	23019	17811	14800	11919
		160	7.14	39783	39783	37599	33816	33416	25858	21483	17308
	XXS		10.16	58779	58779	55547	49966	49374	38205	31742	25569
50	STD	40	3.91	16378	16378	15468	13925	13759	10645	8847	7124
	XS	80	5.54	23653	23653	22351	20105	19871	15378	12774	10287
		160	8.74	38866	38866	36731	33037	32652	25266	20987	16908
	XXS		11.07	50793	50793	48003	43173	42670	33017	27429	22096
65	STD	40	5.16	17914	17914	16929	15227	15048	11644	9674	7793
	XS	80	7.01	24818	24818	23447	21097	20849	16129	13401	10797
		160	9.53	34615	34615	32714	29420	29076	22503	18693	15055
	XXS		14.02	53081	53081	50159	45116	44585	34498	28662	23088
80	STD	40	5.49	15558	15558	14696	13222	13063	10108	8399	6766
	XS	80	7.62	21986	21986	20780	18693	18472	14290	11871	9563
		160	11.13	33079	33079	31253	28111	27780	21497	17859	14386
	XXS		15.24	46976	46976	44392	39928	39459	30536	25369	20436

SECTION 11

FIRE & HVAC



SECTION 11

SEAMLESS CARBON STEEL PIPE. GRADE B, with plain ends. ASTM A106, API 5L & ASTM A53											
Nominal Size DN MM"	Temp. °C ▶			-29 to 38	205	260	350	370	400	430	450
	Stress (SE) in kPa ▶			137800	137800	130221	117130	115752	89570	74412	59943
	Wall Thickness			"MAXIMUM ALLOWABLE PRESSURE/TEMPERATURE RATINGS IN kPa FOR CHEMICAL PLANT AND PETROLEUM REFINERY PIPING SYSTEMS TO ANSI/ASME B31.3a — 1981"							
		Sched No.	mm								
100	STD	40	6.02	13187	13187	12464	11210	11079	8571	7124	5739
		80	8.56	19058	19058	18010	16198	16012	12388	12094	8289
	XXS	120	11.13	25190	25190	23805	21407	21159	16371	13601	10955
		160	13.49	31019	31019	29310	26368	26058	20160	16750	13208
			17.12	40348	40348	38129	34298	33892	26230	21786	17549
125	STD	40	6.55	11561	11561	10921	9825	9708	7517	6243	5038
		80	9.53	17060	17060	16122	14503	14331	11093	9212	7421
	XXS	120	12.70	23130	23130	21855	19657	19430	15034	12492	10059
		160	15.88	29407	29407	27787	24997	24701	19113	15881	12795
			19.05	35897	35897	33926	30516	30158	23337	19388	15620
150	STD	40	7.11	10500	10500	9928	8924	8819	6828	5670	4568
		80	10.97	16474	16474	15571	14007	13842	10707	8895	7165
	XXS	120	14.27	21745	21745	20553	18486	18265	14138	11747	9460
		160	18.26	28325	28325	26768	24074	23784	18410	15296	12319
			21.95	34608	34608	32707	29420	29069	22496	18686	15054
200	STD	20	6.35	7138	7138	6745	6063	5994	4637	3852	3100
		30	7.04	7924	7924	7489	6732	6656	5147	4279	3445
		40	8.18	9246	9246	8737	7855	7765	6008	4995	4024
	XS	60	10.31	11741	11741	11093	9977	9860	7627	6339	5105
		80	12.70	14572	14572	13766	12388	12237	9474	7868	6338
		100	15.09	17452	17452	16488	14834	14655	11341	9426	7593
	XXS	120	18.26	21345	21345	20174	18148	17935	13876	11527	9288
		140	20.62	24308	24308	22971	20656	20415	15799	13125	10569
			22.23	26334	26334	24887	22386	22124	17115	14221	11458
			160	23.01	27340	27340	25838	23240	22964	17769	14765
250	STD	20	6.35	5698	5698	5388	4844	4789	3707	3080	2480
		30	7.80	7028	7028	6642	5974	5905	4568	3796	3059
		40	9.27	8385	8385	7923	7131	7048	5450	4527	3652
	XS	60	12.70	11596	11596	10955	9853	9736	7538	6263	5043
		80	15.09	13863	13863	13098	11781	11644	9012	7483	6028
		100	18.26	16922	16922	15992	14386	14214	10996	9136	7359
	XXS	120	21.44	20036	20036	18934	17032	16825	13022	10817	8716
		140	25.40	23998	23998	16474	20394	20153	15599	12960	10438
			28.58	27229	27229	25734	23143	22875	17700	14703	11844

SECTION 11

FIRE & HVAC

300	STD	20	6.35	4795	4795	4534	4072	4024	3114	2591	2088
		30	8.38	6359	6359	6008	5402	5540	4134	3431	2763
			9.53	7241	7241	6842	6153	6084	4706	3914	3149
	XS	40	10.31	7854	7854	7421	6676	6601	5105	4244	3417
			12.70	9722	9722	9191	8268	8165	6318	5250	4230
		60	14.27	10969	10969	10363	9322	9212	7131	5925	4768
	XXS	80	17.48	13525	13525	12850	11492	11362	8792	7303	5884
		100	21.44	16736	16736	15819	14227	14062	10879	9040	7283
		120	25.40	20015	20015	18913	17011	16811	13008	10804	8702
		140	28.58	22682	22682	21435	19278	19051	14744	12244	9866
		160	33.32	26740	26740	25273	22730	22461	17383	14441	11630
350	STD	10	6.35	4361	4361	4120	3707	3665	2831	2356	1895
		20	7.92	5457	5457	5161	4644	4589	3548	2949	2377
		30	9.53	6580	6580	6222	5595	5533	4279	3555	2866
	XS	40	11.13	7717	7717	7310	6559	6477	5016	4168	3355
			12.70	8833	8833	8351	7510	7421	5739	4768	3845
		60	15.09	10541	10541	9963	8964	8861	6855	5691	4589
	XXS	80	19.05	13421	13421	12684	11410	11272	8723	7248	5836
		100	23.83	16949	16949	16019	14407	14242	11017	9157	7372
		120	27.79	19933	19933	18837	16943	16743	12960	10762	8675
		140	31.75	22964	22964	21703	19519	19292	14931	12402	9990
		160	35.71	26051	26051	24618	22144	21883	16936	14069	11334

* For temperatures above 425°C, see caution on graphitization.

SECTION 11

FIRE & HVAC



SECTION 11

SEAMLESS CARBON STEEL PIPE. GRADE B, with plain ends. ASTM A106, API 5L & ASTM A53												
Nominal Size DN MM"	Temp. °C ▶			-29 to 38	205	260	350	370	400	430	450	
	Stress (SE) in kPa ▶			137800	137800	130221	117130	115752	89570	74412	59943	
	Wall Thickness			MAXIMUM ALLOWABLE PRESSURE/TEMPERATURE RATINGS IN kPa FOR CHEMICAL PLANT AND PETROLEUM REFINERY PIPING SYSTEMS TO ANSI/ASME B31.3a — 1981								
	Sched No.	mm										
400	STD	10	6.35	3810	3810	3603	3238	3197	2474	2060	1660	
		20	7.92	4768	4768	4507	4051	4004	3100	2577	2074	
		30	9.53	5746	5746	5429	4885	4830	3734	3100	2501	
	XS	40	12.70	7703	7703	7283	6545	6470	5009	4162	3349	
		60	16.66	10176	10176	9618	8654	8550	6614	5498	4430	
		80	21.44	13208	13208	12478	11224	11093	8585	7131	5746	
		100	26.19	16274	16274	15378	13835	13670	10576	8785	7076	
		120	30.96	19409	19409	18341	16481	16302	12616	10480	8440	
		140	36.53	23130	23130	21855	19657	19430	15034	12492	10059	
		160	40.49	25824	25824	24404	21952	21697	16784	13945	11238	
	450	STD	10	6.35	3383	3383	3197	2873	2839	2198	1826	1474
			20	7.92	4230	4230	3996	3597	3555	2749	2287	1839
30			9.53	5099	5099	4816	4334	4286	3314	2756	2219	
XS		30	11.13	5967	5967	5643	5071	5016	3879	3225	2598	
			12.70	6835	6835	6456	5808	5739	4437	3686	2969	
		40	14.27	7696	7696	7276	6545	6463	5002	4155	3349	
		60	19.05	10349	10349	9784	8799	8695	6725	5588	4499	
		80	23.83	13043	13043	12326	11086	10955	8475	7042	5670	
		100	29.36	16219	16219	15323	13787	13622	10542	8757	7055	
		120	34.93	19464	19464	18389	16543	16350	12650	10507	8468	
		140	39.67	22282	22282	21056	18941	18713	14483	12030	9694	
		160	45.24	25638	25638	24225	21793	21531	16660	13842	11155	
500	STD	10	6.35	3038	3038	2873	2584	2556	1977	1640	1323	
		20	9.53	4582	4582	4327	3893	3852	2976	2474	1991	
		30	12.70	6139"	6139	5801	5216	5154	3989	3314	2666	
	XS	40	15.09	7317	7317	6911	6215	6146	4754	3948	3183	
		60	20.62	10080	10080	9522	8564	8468	6552	5443	4382	
		80	26.19	12898	12898	12188	10962	10831	8385	6966	5608	
		100	32.54	16171	16171	15287	13746	13580	10514	8730	7035	
		120	38.10	19085	19085	18038	16226	16033	12409	10307	8302	
		140	44.45	22475	22475	21242	19106	18879	14614	12140	9777	
		160	50.01	25450	25450	24094	21675	21421	16577	13766	11093	
	600	STD	10	6.35	2529	2529	2391	2150	2129	1647	1364	1102
			20	9.53	3810	3810	3603	3238	3197	2474	2060	1660
30			12.70	5097	5097	4816	4334	4286	3314	2756	2219	
XS		30	14.27	5739	5739	5423	4878	4823	3734	3100	2494	
		40	17.48	7055	7055	6670	5994	5925	4589	3810	3066	
		60	24.61	10018	10018	9467	8516	8420	6511	5409	4361	
		80	30.96	12691	12691	12002	10783	10659	8254	6856	5519	
		100	38.89	16102	16102	15220	13690	13525	10466	8695	7007	
		120	46.02	19223	19223	18168	16336	16150	12491	10383	8364	
		140	52.37	22048	22048	20835	18741	18520	14331	11906	9591	
		160	59.54	25279	25279	23888	21489	21235	16433	13649	10996	

SECTION 11

Code Description Size

STAINLESS STEEL PIPE

- Seamless and Welded Pipe – Is available in accordance with material specification ASTM A312 and dimensional specification ANSI/ASME B36.19M and ANSI/ASME B36.10M.
- Sizes from 6 NB (1/8") to 600 NB (16") in SCH 10S and SCH 40S. Seamless pipe is also available in heavier schedules such as SCH 80S, SCH 160 and XXS.
- Watermark Approved Pipe 316L is stocked for Drinking Water Applications. Pipe Lengths are 6 metre standard.

STAINLESS STEEL PIPES FOR DRINKING WATER, INDUSTRIAL AND SPECIAL HAZARD APPLICATIONS

WATERMARK ERW SCH10S S/S 316L PIPE - 6M L

PIPE-SS-SCH10-15	15mm (21.3)
PIPE-SS-SCH10-20	20mm (26.7)
PIPE-SS-SCH10-25	25mm (33.7)
PIPE-SS-SCH10-32	32mm (42.4)
PIPE-SS-SCH10-40	40mm (48.3)
PIPE-SS-SCH10-50	50mm (60.3)
PIPE-SS-SCH10-65	65mm (73.0)
PIPE-SS-SCH10-80	80mm (88.9)
PIPE-SS-SCH10-100	100mm (114.3)
PIPE-SS-SCH10-150	150mm (168.3)
PIPE-SS-SCH10-200	200mm (219.1)

SCH 5S S/S ERW 316 PIPE - 6M L

PIPE-SS-SCH5-15	15mm (21.3)
PIPE-SS-SCH5-20	20mm (26.7)
PIPE-SS-SCH5-25	25mm (33.7)
PIPE-SS-SCH5-32	32mm (42.4)
PIPE-SS-SCH5-40	40mm (48.3)
PIPE-SS-SCH5-50	50mm (60.3)
PIPE-SS-SCH5-65	65mm (73.0)
PIPE-SS-SCH5-80	80mm (88.9)
PIPE-SS-SCH5-100	100mm (114.3)
PIPE-SS-SCH5-150	150mm (168.3)
PIPE-SS-SCH5-200	200mm (219.1)

SECTION 11

FIRE & HVAC

Code Description Size

SECTION 11

Nominal Size DN	OUTSIDE DIAMETER mm	NOMINAL WALL THICKNESS & INSIDE DIAMETER - millimetres							
		SCHEDULE 5S		SCHEDULE 10S		SCHEDULE 40S		SCHEDULE 80S	
		Wall Thickness	Inside Diameter	Wall Thickness	Inside Diameter	Wall Thickness	Inside Diameter	Wall Thickness	Inside Diameter
6	10.29	-	-	1.24	7.81	1.73	6.83	2.41	5.47
8	13.72	-	-	1.65	10.42	2.24	9.24	3.02	7.68
10	17.15	-	-	1.65	13.85	2.31	12.53	3.20	10.75
15	21.34	1.65	18.04	2.11	17.12	2.77	15.80	3.73	13.88
20	26.67	1.65	23.37	2.11	22.45	2.87	20.93	3.91	18.85
25	33.40	1.65	30.10	2.77	27.86	3.38	26.64	4.55	24.30
32	42.16	1.65	38.86	2.77	36.62	3.56	35.04	4.85	32.46
40	48.26	1.65	44.96	2.77	42.72	3.68	40.90	5.08	38.10
50	60.32	1.65	57.03	2.77	54.79	3.91	52.51	5.54	49.25
65	73.02	2.11	68.81	3.05	66.93	5.16	62.71	7.01	59.01
80	88.90	2.11	84.68	3.05	82.80	5.49	77.92	7.62	73.66
100	114.30	2.11	110.08	3.05	108.20	6.02	102.26	8.56	97.18
125	141.30	2.77	135.76	3.40	134.50	6.55	128.19	9.52	122.25
150	168.28	2.77	162.74	3.40	161.47	7.11	154.05	10.97	146.33
200	219.08	2.77	213.54	3.76	211.56	8.18	202.72	12.70	193.68
250	273.05	3.40	266.24	4.19	264.67	9.27	254.51	12.70	247.65
300	323.85	3.96	315.93	4.57	314.71	9.52	304.08	12.70	298.45
350	355.60	3.96	347.68	4.78	346.05	-	-	-	-
400	406.40	4.19	398.02	4.78	396.85	-	-	-	-
450	457.20	4.19	448.82	4.78	447.65	-	-	-	-
500	508.00	4.78	498.45	5.54	496.93	-	-	-	-
600	609.60	5.54	598.53	6.35	596.90	-	-	-	-
750	762.00	6.35	749.30	7.92	746.16	-	-	-	-

Code Description Size

S/S PIPES FOR MECHANICAL / INDUSTRIAL APPLICATIONS

SCH 10S S/S ERW 304 PIPE - 6M L

PIPE-10s-304-15	15mm
PIPE-10s-304-20	20mm
PIPE-10s-304-25	25mm
PIPE-10s-304-32	32mm
PIPE-10s-304-40	40mm
PIPE-10s-304-50	50mm
PIPE-10s-304-65	65mm
PIPE-10s-304-80	80mm
PIPE-10s-304-100	100mm
PIPE-10s-304-150	150mm
PIPE-10s-304-200	200mm

SCH 5S S/S ERW 304 PIPE - 6M L

PIPE-5S-304-15	15mm
PIPE-5S-304-20	20mm
PIPE-5S-304-25	25mm
PIPE-5S-304-32	32mm
PIPE-5S-304-40	40mm
PIPE-5S-304-50	50mm
PIPE-5S-304-65	65mm
PIPE-5S-304-80	80mm
PIPE-5S-304-100	100mm
PIPE-5S-304-150	150mm
PIPE-5S-304-200	200mm

**For all Sch40 ERW or Seamless Pipe enquiries please contact Sales.*

DROPPERS

VICTAULIC VIC-FLEX FLEXIBLE DROPPERS FOR USE IN FIRE SPRINKLER SYSTEMS

AH4 BRAIDED HOSE ONLY -15MM HS ONLY B X N

A0AQF0790000029	AQF/790x15 BRD AH4 HS ONLY BxN
A0AQF0914000009	AQF/914x15 BRD AH4 HS ONLY BxN
A0AQF1220000026	AQF/1220x15 BRD AH4 HS ONLY BxN
A0AQF1525000026	AQF/1525x15 BRD AH4 HS ONLY BxN
A0AQF1830000026	AQF/1830x15 BRD AH4 HS ONLY BxN

SECTION 11
FIRE & HVAC

SECTION 11

Code	Description	Size
AH1 BRAIDED HOSE ONLY		
A0AQF1220000121	AQF/1220x10 BRD AH1 HS ONLY BX	
A0AQF1220000124	AQF/1220x15 BRD AH1 HS ONLY Bx	
A0AQF1525000103	AQF/1525x10 BRD AH1 HS ONLY BX	
A0AQF1525000105	AQF/1525x15 BRD AH1 HS ONLY Bx	
A0AQF1830000102	AQF/1830x10 BRD AH1 HS ONLY BX	
A0AQF1830000104	AQF/1830x15 BRD AH1 HS ONLY BX	
AH2 BRAIDED HOSE ONLY		
A0AQF1220000120	AQF/1220x10 BRD AH2 HS ONLY Bx	
A0AQF1220000123	AQF/1220x15 BRD AH2 HS ONLY Bx	
A0AQF1525000102	AQF/1525x10 BRD AH2 HS ONLY Bx	
A0AQF1525000104	AQF/1525x15 BRD AH2 HS ONLY Bx	
A0AQF1830000101	AQF/1830x10 BRD AH2 HS ONLY Bx	
A0AQF1830000103	AQF/1830x15 BRD AH2 HS ONLY Bx	
BRACKET ASSEMBLY ONLY		
AB1 GATE BRACKET		
A0AQF0700000002	AQF/700 AB1 ADJ OPEN GATE BRACKET SUBASSEMBLY	
A0AQF1400000002	AQF/1400 AB1 ADJUSTABLE OPEN GATE BRACKET	
AB2 OPEN GATE DRYWALL ADJUSTABLE BRACKET SASY		
A0AQF0700000004	AQF/700 AB2 OPEN GATE DRYWALL ADJUSTABLE BRACKET SASY	
A0AQF1400000004	AQF/1400 AB2 OPEN GATE DRYWALL ADJUSTABLE BRACKET SASY	
AB7 ADJUSTABLE BRACKET SUBASSEMBLY		
A0AQF0700000001	AQF/700 AB7 ADJUSTABLE BRACKET SUBASSEMBLY	
A0AQF1400000001	AQF/1400 AB7 ADJUSTABLE BRACKET SUBASSEMBLY	
AB3 INSTITUTIONAL CENTER BRKT ASSY		
A0AQF0000000004	AQF/AB3 INSTITUTIONAL CENTER BRKT ASSY SW Flexible SPK DROP	
AB9 - HAT FURRING CHANNEL BRACKET		
A0AQF0635000002	AQF/ 610 AB9 HAT CHANNEL BKT	

SECTION 11

FIRE & HVAC

Code

Description

Size

RIGID PIPE DROPPERS FOR USE IN FIRE SPRINKLER SYSTEMS

- Double ended
- 25mm Medium Pipe

RPD-600X10	600mm Long, 10mm orifice x 25mm Dia
RPD-900X10	900mm Long, 10mm orifice x 25mm Dia
RPD-1200X10	1200mm Long, 10mm orifice x 25mm Dia
RPD-600X15	600mm Long, 15mm orifice x 25mm Dia
RPD-900X15	900mm Long, 15mm orifice x 25mm Dia
RPD-1200X15	1200mm Long, 15mm orifice x 25mm Dia
RPD-600X20	600mm Long, 20mm orifice x 25mm Dia
RPD-900X20	900mm Long, 20mm orifice x 25mm Dia
RPD-1200X20	1200mm Long, 20mm orifice x 25mm Dia

PIPE PREPERATION AND FABRICATION SERVICES

PIPE PREPARATION SERVICES

Pipe Services include:

- Cutting to Custom Lengths
- End Connection Preparation - Roll Grooving or Threading
- For all enquiries please contact Sales

FABRICATION SERVICES

- Pre-Fabrication of Fire Protection Systems
- Pre-Fabrication of Mechanical Piping Systems
- Pre-Fabrication of Stainless Steel Piping Systems
- Fabricated Fittings - Steel and Stainless Steel (Passivated)
- For all enquiries please contact Sales

SECTION 11

FIRE & HVAC

Code **Description** **Size**

VALVES

FIRE PROTECTION VALVES AND MONITORS

FIRELOCK CONTROL VALVES

728 BALL VALVES UL/FM

The Series 728 FireLock valve is a full port, ball valve that is UL/FM rated for 365psi/25 BAR service in all sizes (LPCB and VdS listed for 20 BAR services). Available with grooved or threaded ends (NPT), the valve body is brass. The ball is chrome plated brass with a stainless steel stem. Reinforced seats aid ease of operation and provide a durable, corrosion-free seat. Flow characteristics exceed UL Specification 1091 and FM Approval Standard 1112. The valve is approved for indoor and outdoor use.

V728-32	32mm (42.4)
V728-40	40mm (48.3)
V728-50	50mm (60.3)



705 BUTTERFLY VALVES WITH INTERNAL SWITCHES (B CLASS) UL/FM

The Series 705 Butterfly Valve features a weatherproof actuator housing Approved for indoor or outdoor use, a ductile iron body and disc with EPDM seats. Designed for fire protection services only. Victaulic FireLock Series 705 Butterfly Valve is cULus Listed, LPCB Listed, FM and VdS Approved for 300 psi/2068 kPa service.

V705-50	50mm (60.3)
V705-65A	65mm (76.1)
V705-80	80mm (88.9)
V705-100	100mm (114.3)
V705-150A	150mm(165.1)
V705-200	200mm (219.1)
V705-250	250mm (273.0)
V705-300	300mm (323.9)



765 HP BUTTERFLY VALVES WITH INTERNAL SWITCHES (B CLASS) UL/FM

The Series 765 high pressure butterfly valve features an approved weatherproof actuator housing approved for indoor or outdoor use. It has a ductile iron body and disc with Nitrile seats. Designed for fire protection services only. Series 765 valve is UL Listed for 365psi/2517kPa service. Sizes 2 - 8" are FM Approved for 365 psi/2517 kPa and sizes 10 - 12" are FM Approved for 300 psi/2068 kPa service. All sizes are LPCB listed for 365 psi/2517 kPa.

V765-80	80mm (88.9)
V765-100	100mm (114.3)
V765-150A	150mm (165.1)
V765-200	200mm (219.1)
V765-250	250mm (273.0)
V765-300	300mm (323.9)

SECTION 11

FIRE & HVAC

Code	Description	Size
717 CHECK VALVES UL/FM		
Designed for fire protection services only. Can be installed in both horizontal or vertical positions.		
V717-50		50mm (60.3)
V717-65A		65mm (76.1)
V717-80		80mm (88.9)
V717-100		100mm (114.3)
V717-150A		150mm(165.1)
V717-200		200mm (219.1)
V717-250		250mm (273.0)
V717-300		300mm (323.9)



RG GATE VALVES UL/FM

GV-OSY-RG-80		80mm (88.9)
GV-OSY-RG-100		100mm (114.3)
GV-OSY-RG-165		165mm (165.1)
GV-OSY-RG-200		200mm (219.1)
GV-OSY-RG-250		250mm (273.0)
GV-OSY-RG-300		300mm (323.9)

FLANGED T/E GATE VALVES UL/FM

GV-OSY-TE-80		80mm (88.9)
GV-OSY-TE-100		100mm (114.3)
GV-OSY-TE-165		165mm (165.1)
GV-OSY-TE-200		200mm (219.1)
GV-OSY-TE-250		250mm (273.0)
GV-OSY-TE-300		300mm (323.9)



CONTROL VALVE SUPERVISORY SWITCHES

B CLASS MONITORS

P1000040	Model RBVS (suits Ball Valve Lever Type)
P1010106	Model OSYSUA-1 (suits OSY Valve)
P1010206	Model OSYSUA-2 (suits OSY Valve)
P1010201	Model PTS-C - Plug Type (suits Handwheel)
P1010203	Model PCVS-2 (suits PIV & BFLY)

A' CLASS MONITORS (AS PER AS2118.1 & 2419.1)

AMTRON 502 LED MONITOR

AMT-V705	Installed on Butterfly
AMT-GATE	Installed on Gate Valve (Steel Spindle)

***Other monitoring options available on request**

SECTION 11 FIRE & HVAC

Code	Description	Size
SPRINKLER CONTROL VALVE ASSEMBLIES IN CABINETS		
SCVA-50		50mm (60.3)
SCVA-65		65mm (76.1)
SCVA-80		80mm (88.9od)
<i>*Custom sizes available on request</i>		
AV-1 TYCO SPRINKLER ALARM VALVES UL/FM		
AV1-65R	Grooved	65mm
AV1-100R	Grooved	100mm
AV1-150R	Grooved	150mm
AV1-200R	Grooved	200mm
AV1-100TE	T/E Flanged	100mm
AV1-150TE	T/E Flanged	150mm
AV1-200TE	T/E Flanged	200mm
AV-1 TYCO ALARM VALVE TRIM KIT UL/FM		
AV1-65-TK		65mm
AV1-100-TK		100mm
AV1-150-TK		150mm
AV1-200-TK		200mm
751 VICTAULIC SPRINKLER ALARM VALVES UL/FM- GROOVED		
751-50		50mm
751-65		65mm (76.1)
751-80		80mm
751-100		100mm
751-150		150mm (165.1)
751-200		200mm
751 VICTAULIC ALARM VALVE TRIM KIT UL/FM - GROOVED		
751-50-TK		50mm
751-65-TK		65mm
751-80-TK		80mm
751-100-TK		100mm
751-150-TK		150mm
751-200-TK		200mm
SPRINKLER SYSTEM ACCESSORIES		
526301001P	WMA-1 Water Motor Alarm Gong	
V760-760	760 Water Motor Alarm Gong	
700487	TDV-1 Waste and Test Valve 50x15mm	
WTBV-50	Waste and Test Valve Ball Style F&F 50mm	
WTU-SG	Waste and Test Unit with Site Glass - Ball Valve Style	
RC-1	Retard Chamber	
RC-ORIF	Restricted Orifice Nipple	
JP-1	Jacking Pump	
PUMPSTART	Pump Start Assembly	

SECTION 11

FIRE & HVAC

HYDROFLOW
DISTRIBUTORS (AUST) PTY LTD

HYDROFLOW
DISTRIBUTORS (AUST) PTY LTD

SECTION 11

Code	Description	Size
400E DELUGE VALVES - DIAPHRAGM STYLE UL, FM FOR USE IN DELUGE AND PREACTION SYSTEMS - GROOVED		
400E-50R	400E Deluge Valve 50mm RG	
400E-65R	400E Deluge Valve 65mm RG	
400E-100R	400E Deluge Valve 100mm RG	
400E-150R	400E Deluge Valve 150mm RG	
400E-200R	400E Deluge Valve 200mm RG	
400E-100TE	400E Deluge Valve 100mm T/E Flanged	
400E-150TE	400E Deluge Valve 150mm T/E Flanged	
400E-200TE	400E Deluge Valve 200mm T/E Flanged	

DELUGE & PRE-ACTION VALVE TRIM ARRANGEMENTS UL

400E-1M	Wet - hydraulic controlled
400E-4M	Dry - pneumatic controlled
400E-2M	Electric - electric controlled
400E-3M	Electro pneumatically controlled
400E-7M	Single interlock - electric controlled
400E-7BM	Double interlock - electric/electric controlled
400E-7DM	Double interlock - electric/pneumatic controlled

* To order please choose Trim code and add the required Valve size

***For On-Off, Pressure Controlled and Manual Operating Options or 700 Series Valves, please contact Sales**

HVAC VALVES AND ACCESSORIES

HYDROFLOW LUG BUTTERFLY VALVES - LEVER

BFV40LL	40mm
BFV50LL	50mm
BFV65LL	65mm
BFV80LL	80mm
BFV100LL	100mm
BFV125LL	125mm
BFV150LL	150mm



***Other sizes available on request**

HYDROFLOW LUG BUTTERFLY VALVE - LUGGED GEAR OPERATED

BFV150LLG	150mm
BFV200LLG	200mm
BFV250LLG	250mm
BFV300LLG	300mm
BFV350LLG	350mm
BFV400LLG	400mm
BFV450LLG	450mm
BFV500LLG	500mm
BFV600LLG	600mm



Code	Description	Size
HYDROFLOW WAFER BUTTERFLY VALVES - LEVER		
BFV40LW		40mm
BFV50LW		50mm
BFV65LW		65mm
BFV80LW		80mm
BFV100LW		100mm
BFV125LW		125mm
BFV150LW		150mm



**Other sizes available on request*

HYDROFLOW WAFER BUTTERFLY VALVE - GEAR OPERATED

BFV150LWG		150mm
BFV200LWG		200mm
BFV250LWG		250mm
BFV300LWG		300mm
BFV350LWG		350mm
BFV400LWG		400mm
BFV450LWG		450mm
BFV500LWG		500mm
BFV600LWG		600mm



HYDROFLOW WAFER CHECK VALVES

- Suitable for Water
- Cast Iron, Epoxy Coated, S/S discs, EPDM Seat
- Suits Table E Flanges
- Working Pressure: 1600kPa

WCV50		50mm
WCV65		65mm
WCV80		80mm
WCV100		100mm
WCV125		125mm
WCV150		150mm
WCV200		200mm
WCV250		250mm
WCV300		300mm
WCV350		350mm
WCV400		400mm
WCV450		450mm
WCV500		500mm
WCV600		600mm



SECTION 11

FIRE & HVAC

Code	Description	Size
HYDROFLOW CAST IRON Y STRAINERS - TABLE E		
YS50		50mm
YS65		65mm
YS80		80mm
YS100		100mm
YS125		125mm
YS150		150mm
YS200		200mm
YS250		250mm
YS300		300mm
YS350		350mm
YS400		400mm
YS450		450mm
YS500		500mm
YS600		600mm



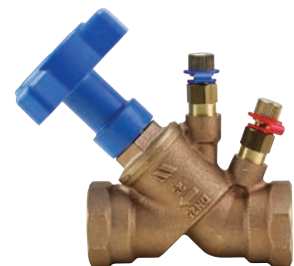
WATTS BALANCING VALVES MODEL W-STBV - THREADED BSP

SERIES W-STBV-25T

The Series W-STBV Static Balancing Valve is designed for flow balancing in cooling, heating or process water systems. Its measuring points enable convenient system troubleshooting.

- Accurate flow control
- Numerical indicator of opening rate on the handwheel
- Lockable set position
- Shut-off function achieved by handwheel
- Self-sealing measuring points to protect against leakage
- Working Temperature: -10~120°
- Working Pressure: PN25
- Fluid Medium: Cold and Hot Water / Ethylene Glycol
- Connection: Threaded Connection
- Connection Standard: GB/T 7306.1,ISO 7/1

W-STBV015-25T	15mm
W-STBV020-25T	20mm
W-STBV025-25T	25mm
W-STBV032-25T	32mm
W-STBV040-25T	40mm
W-STBV050-25T	50mm



SECTION 11

FIRE & HVAC

SECTION 11

Code **Description** **Size**

WATTS BALANCING VALVES MODEL W-JP45X - FLANGED PN16

SERIES W-JP45X-16Q

The Series W-JP45X Static Balancing Valve is designed for flow balancing in cooling, heating or process water systems. Its measuring points enable convenient system troubleshooting.

- Accurate flow control
- Numerical indicator of opening rate on the handwheel
- Lockable set position
- Shut-off function achieved by handwheel
- Self-sealing measuring points to protect against leakage Dimensions: DN50-DN300 (DN350-DN400 can be customized)
- Working Temperature: -10~120°C
- Working Pressure: PN16
- Fluid Medium: Cold and Hot Water / Ethylene Glycol
- Connection: Flange Connection PN16
- Connection Standard: GB/T17241.6



W-JP45X050-16Q	50mm
W-JP45X065-16Q	65mm
W-JP45X080-16Q	80mm
W-JP45X100-16Q	100mm
W-JP45X125-16Q	125mm
W-JP45X150-16Q	150mm
W-JP45X200-16Q	200mm
W-JP45X250-16Q	250mm
W-JP45X300-16Q	300mm
W-JP45X350-16Q	350mm
W-JP45X400-16Q	400mm

HYDROFLOW TWIN SPHERE BELLOWS - THREADED BSP (RUBBER EXPANSION JOINT)

FLEXBSP25	25mm
FLEXBSP32	32mm
FLEXBSP40	40mm
FLEXBSP50	50mm

HYDROFLOW SINGLE SPHERE FLANGED BELLOWS - TABLE E (RUBBER EXPANSION JOINT)

REJ32	32mm
REJ40	40mm
REJ50	50mm
REJ65	65mm
REJ80	80mm
REJ100	100mm
REJ125	125mm
REJ150	150mm
REJ200	200mm
REJ250	250mm
REJ300	300mm



SECTION 11

FIRE & HVAC

Code	Description	Size
HYDROFLOW SINGLE SPHERE FLANGED BELLOWS - TABLE E X PN16		
REJ32-PN16XTE		32mm
REJ40-PN16XTE		40mm
REJ50-PN16XTE		50mm
REJ65-PN16XTE		65mm
REJ80-PN16XTE		80mm
REJ100-PN16XTE		100mm
REJ125-PN16XTE		125mm
REJ150-PN16XTE		150mm
REJ200-PN16XTE		200mm
REJ250-PN16XTE		250mm
REJ300-PN16XTE		300mm



SECTION 11

HYDROFLOW TWIN SPHERE FLANGED BELLOWS

- Double sphere rubber expansion joints, flanged type
- Body: EPDM, lining: chinlon cord fabrics,
- Frame: hard steel wires, flange: carbon steel
- Working pressure: PN 16
- Flange rilling acc. To BS 10 Table E or one end flange drilling acc. To BS10 Table E, the other acc. To DIN2501 PN16

HYDROFLOW TWIN SPHERE FLANGED BELLOWS - TABLE E (TWIN RUBBER EXPANSION JOINT)

REJ-T-32	32mm
REJ-T-40	40mm
REJ-T-50	50mm
REJ-T-65	65mm
REJ-T-80	80mm
REJ-T-100	100mm
REJ-T-125	125mm
REJ-T-150	150mm
REJ-T-200	200mm
REJ-T-250	250mm
REJ-T-300	300mm

HYDROFLOW TWIN SPHERE FLANGED BELLOWS - TABLE E X PN16 (TWIN RUBBER EXPANSION JOINT)

REJ-T-32-PN16XTE	32mm
REJ-T-40-PN16XTE	40mm
REJ-T-50-PN16XTE	50mm
REJ-T-65-PN16XTE	65mm
REJ-T-80-PN16XTE	80mm
REJ-T-100-PN16XTE	100mm
REJ-T-125-PN16XTE	125mm
REJ-T-150-PN16XTE	150mm
REJ-T-200-PN16XTE	200mm
REJ-T-250-PN16XTE	250mm
REJ-T-300-PN16XTE	300mm