

Code Description Size

SECTION 11

WYE DIVIDERS

Uncontrolled 45° wye dividers - Aluminium With (Al) Adaptors

PDUC-BSP-AL	With BSP(M) Threads
PDUC-STZ-AL	With Storz
PDUC-CFA-AL	With Aluminium CFA
PDUC-MFB-AL	With Aluminium MFB
PDUC-NSW-AL	With Aluminium NSW
PDUC-QRT-AL	With Aluminium QRT
PDUC-SA-AL	With Aluminium SA

UNCONTROLLED 45° WYE DIVIDERS - ALUMINIUM WITH (BR) ADAPTORS

PDUC-CFAB-AL	With Brass CFA
PDUC-MFBB-AL	With Brass MFB
PDUC-NSWB-AL	With Brass NSW
PDUC-QRTB-AL	With Brass QRT
PDUC-SAB-AL	With Brass SA

UNCONTROLLED 90° WYE DIVIDERS - ALUMINIUM WITH (AL) ADAPTORS

PDUC-90-BSP-AL	With BSP(M) Threads
PDUC-90-STZ-AL	With Storz
PDUC-90-CFA-AL	With Aluminium CFA
PDUC-90-MFB-AL	With Aluminium MFB
PDUC-90-NSW-AL	With Aluminium NSW
PDUC-90-QRT-AL	With Aluminium QRT
PDUC-90-SA-AL	With Aluminium SA

CONTROLLED 45° WYE DIVIDERS - ALUMINIUM WITH (AL) ADAPTORS

PDC-BSP-AL	With BSP(M) Threads
PDC-STZ-AL	With Storz
PDC-CFA-AL	With ALUMINIUM CFA
PDC-MFB-AL	With ALUMINIUM MFB
PDC-NSW-AL	With ALUMINIUM NSW

CONTROLLED 45° WYE DIVIDERS - ALUMINIUM WITH (BR) ADAPTORS

PDC-CFA(B)-AL	With Brass CFA
PDC-MFB(B)-AL	With Brass MFB
PDC-NSW(B)-AL	With Brass NSW
PDC-QRT(B)-AL	With Brass QRT
PDC-SA(B)-AL	With Brass SA

Code Description Size

HOSE REELS, EXTINGUISHERS AND FIRE BLANKETS

HOSE REELS

FHR3619	AS Fixed Fire Hose Reel 19mm 36m with fixings
FHR383026RE	AS Fixed Fire Hose Reel w Swing Arm 19mm x 36m
FHR5019	AS Fixed Fire Hose Reel 19mm 50m with fixings
FHR-SLIM	AS Standard Slimline Hose Reel
FHR3630	AS Door Mount Hose Reel - key lock 19mm x 36m



SECTION 11

HOSE REEL ACCESSORIES

FHRC036	Hose Reel Cover Vinyl (suits 36m)
FHRCV36	Hose Reel Cover UV (suits 36m)
FHRC050	Hose Reel Cover Vinyl (suits 50m)
FHRSTAND	Hose Reel Stand
FHRBR160	Hose Reel Bracket Adjustable 90-160mm
FHRBR300	Hose Reel Bracket Adjustable 160-300mm

HOSE REEL NOZZLES

HRN120	Hose Reel Nozzle Ball Valve Style 20mm
HRN3	Twist Jet Nozzle 19mm- Brass
HRN4	Fog Nozzle 19mm - Brass/Rubber
HRN5	Aluminium Fog Nozzle 25mm BSP
HRN6	Nozzle BP-100-19mm (Brass-Plas)
HRN6A	Nozzle BP-100-25mm (Brass-Plas)
HRN7	Nozzle BP-150-38mm (Brass-Plas)
HRN8	Nozzle PP-100-19mm (Plas-Plas)
HRN8A	Nozzle PP-100-25mm (Plas-Plas)
HRN9	Nozzle PP-150-38mm (Plas-Plas)
NT	Nozzle Plastic Tail Pieces (19mm, 25mm, 38mm) Male Female BSP Thread

* For other accessories please contact Sales.

PORTABLE EXTINGUISHERS AND FIRE BLANKETS

PORTABLE FIRE EXTINGUISHERS

EXTBF90AW	9.0L Air Water Extinguisher
EXTBF90AF	9.0L Foam Extinguisher
EXTFP20CO2A	Carbon Dioxide Extinguisher 2.0kg (Class B,E) w W/Brckt Bracket
EXTFP35CO2A	Carbon Dioxide Extinguisher 3.5kg (Class B,E) w W/Brckt Bracket
EXTFP50CO2A	Carbon Dioxide Extinguisher 5.0kg (Class B,E) w W/Brckt Bracket
EXTBF90ABE	Dry Chemical Extinguisher 9.0kg (Class A,B,E) w W/Brckt Bracket
EXTBF10ABE	Dry Chemical Extinguisher 1.0kg (Class A,B,E) w V/Brckt Bracket
EXTBF15ABE	Dry Chemical Extinguisher 1.5kg (Class A,B,E) w V/Brckt Bracket
EXTBF20ABE	Dry Chemical Extinguisher 2.0kg (Class A,B,E) w V/Brckt Bracket



Code	Description	Size
EXTBF25ABE	Dry Chemical Extinguisher 2.5kg (Class A,B,E) w V/Brckt Bracket	
EXTBF45ABE	Dry Chemical Extinguisher 4.5kg (Class A,B,E)w W/Brckt Bracket	
EXTBF25WC	Wet Chemical Extinguisher 2.0ltr (Class A,F) w V/Brckt bracket	
EXTBF70WC	Wet Chemical Extinguisher 7.0ltr (Class A,F) w V/Brckt Bracket	
EXT-STAND	Portable Fire Extinguisher Stand	
EXT-TROLLEY	Portable Fire Extinguisher Trolley	

FIRE BLANKETS

FBLANKET1X1	Fire Blanket 1MX1M
FBLANKET12X12	Fire Blanket 1.2MX1.2M
FBLANKET18X12	Fire Blanket 1.8MX1.2M
FBLANKET18X18	Fire Blanket 1.8MX1.8M

CABINETS - TO SUIT HYDRANT/BOOSTER, HOSE REEL, EXTINGUISHER

HYDRANT & BOOSTER CABINETS

CAB130326	Cabinet w Legs. Suits Dual 100mm Hydrant or Booster Assy
CAB130325	Cabinet w Stand - Suits Dual 100mm Booster & Feed Hydrant
CAB130333	Cabinet w Stand - Suits Quad 150mm Booster & Feed Hydrant
CAB119452	Cabinet w Legs - D/Door - 2100Wx1500Hx650mmD (inc legs 300mm) - Suits Booster & Feed Assemblies
CAB130334	Cabinet w Legs - 605Wx1520Hx400mmD (inc legs 300mm) - Suits Single Hydrant and Hose Reel

HOSE REEL CABINETS

CABHR-15A	Cabinet - Hose Reel S/Door w Latch 850x1065x310mm
CABHR-15	Cabinet - Hose Reel S/Door w Latch 850x1065x330mm
CABHR-15C	Cabinet - Hose Reel S/Door 003 850x1065x310mm
CABHR-15B	Cabinet - Hose Reel S/Door 003 850x1065x330mm
CABHR-16A	Cabinet - Hose Reel D/Door 850x1065x310mm
CABHR-16	Cabinet - Hose Reel D/Door 850x1065x330mm
CABHR-16C	Cabinet - Hose Reel D/Door 850x1065x400mm
CABHR-STAND45A	Cabinet Stand - to suit Hose Reel 850x1065x310mm
CABHR-STAND45	Cabinet Stand - to suit Hose Reel 850x1065x330mm

EXTINGUISHER CABINETS

CABEX4.5KB	Cabinet - 4.5KG Extinguisher Keylock/Breakglass 552Hx282Wx202mmD
CABEX5.0KB	Cabinet - 5KG CO2 Extinguisher Keylock/Breakglass
CABEX9.0KB	Cabinet - 9.0KG Extinguisher Keylock/Breakglass 710Hx 282Wx262mmD
CABEX4.5PL	Cabinet - 4.5KG Extinguisher Pushlock
CABEX5.0PL	Cabinet - 5KG CO2 Extinguisher Pushlock
CABEX9.05PL	Cabinet - 9KG Extinguisher Pushlock

***For other Cabinet options please contact Sales.**

Code Description Size

SPRINKLERS AND ACCESSORIES

SPRINKLERS

VICTAULIC FIRELOCK SPRINKLERS

10mm Standard Spray
Sprinklers LH K4.2 (metric)
UPRIGHT (SSU), Standard
Response

575801155	TY-B 10mm K4.2 Upright Qck Res 68°C Brs
575809155	TY-B 10mm K4.2 Upright Qck Res 68°C Chr
575801175	TY-B 10mm K4.2 Upright Qck Res 79°C Brs
5758011200	TY-B 10mm K4.2 Upright Qck Res 93°C Brs

Pendent (SSP) SR

575811155	TY-B 10mm K4.2 Pendant Qck Res 68°C Brs
575819155	TY-B 10mm K4.2 Pendant Qck Res 68°C Chr
575814155	TY-B 10mm K4.2 Pendant Qck Res 68°C Bright Wht
575811175	TY-B 10mm K4.2 Pendant Qck Res 79°C Brs
575811200	TY-B 10mm K4.2 Pendant Qck Res 93°C Brs

**10MM STANDARD SPRAY SPRINKLERS LH K4.2 (METRIC)
UPRIGHT, STANDARD SPRAY QUICK RESPONSE (QR)**

S24EACQA10	TY-B 10mm K4.2 Upright Qck Res 68°C Brs
S24EACQA20	TY-B 10mm K4.2 Upright Qck Res 68°C Chr
S24EACQAW0	TY-B 10mm K4.2 Upright Qck Res 79°C Brs
S24EAEQA10	TY-B 10mm K4.2 Upright Qck Res 93°C Brs
S24EAFQA10	V2402 10mm K4.2 Upright Qck Res 93°C Brs

Pendent (SSP) SR

S24E4CQA10	TY-B 10mm K4.2 Pendant Qck Res 68°C Brs
S24E4CQA20	TY-B 10mm K4.2 Pendant Qck Res 68°C Chr
S24E4CQAW0	TY-B 10mm K4.2 Pendant Qck Res 68°C Bright Wht
S24E4EQA10	TY-B 10mm K4.2 Pendant Qck Res 79°C Brs
S24E4FQA10	TY-B 10mm K4.2 Pendant Qck Res 93°C Brs

Code Description Size

15MM STANDARD SPRAY SPRINKLERS LH/OH K5.6 UPRIGHT (SSU), STANDARD RESPONSE

S271ACS410	V2703 15mm K5.6 Upright Std Res 68°C Brs	
S271ACS420	V2703 15mm K5.6 Upright Std Res 68°C Chr	
S271ACS4W0	V2703 15mm K5.6 Upright Std Res 68°C Bright Wht	
S271ACQ410	V2704 15mm K5.6 Upright Qck Res 68°C Brs	
S271ACQ420	V2704 15mm K5.6 Upright Qck Res 68°C Chr	
S271ACQ4W0	V2704 15mm K5.6 Upright Qck Res 68°C Bright Wht	



PENDENT (SSP) SR

S271BCS410	V2707 15mm K5.6 Pendant Std Res 68°C Brs	
S271BCS420	V2707 15mm K5.6 Pendant Std Res 68°C Chr	
S271BCS4W0	V2707 15mm K5.6 Pendant Std Res 68°C Bright Wht	
S271BCS480	V2707 15mm K5.6 Pendant Std Res 68°C Nickel Teflon	
S271BES410	V2707 15mm K5.6 Pendant Std Res 79°C Brs	
S271BFS410	V2707 15mm K5.6 Pendant Std Res 93°C Brs	
S271BJS410	V2707 15mm K5.6 Pendant Std Res 141°C Brs	
S271BKS410	V2707 15mm K5.6 Pendant Std Res 182°C Brs	

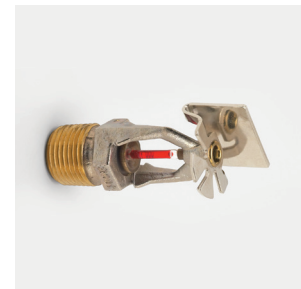


PENDENT (SSP), QUICK RESPONSE (SR)

S271BCQ410	V2708 15mm K5.6 Pendant Qck Res 68°C Brs	
S271BCQ420	V2708 15mm K5.6 Pendant Qck Res 68°C Chr	
S271BCQ4W0	V2708 15mm K5.6 Pendant Qck Res 68°C Bright Wht	
S271BCQ4B0	V2708 15mm K5.6 Pendant Qck Res 68°C Blk	
S271BCQ480	V2708 15mm K5.6 Pendant Qck Res 68°C Nickel teflon	
S271BEQ410	V2708 15mm K5.6 Pendant Qck Res 79°C Brs	
S271BFQ410	V2708 15mm K5.6 Pendant Qck Res 93°C Brs	
S271BJQ410	V2708 15mm K5.6 Pendant Qck Res 141°C Brs	
S271BJQ420	V2708 15mm K5.6 Pendant Qck Res 141°C Chr	

HORIZONTAL SIDEWALL (HSW) SR

S271CCS410	V2709 15mm K5.6 HSW Std Res 68°C Brs	
S271CCS420	V2709 15mm K5.6 HSW Std Res 68°C Chr	
S271CCS4W0	V2709 15mm K5.6 HSW Std Res 68°C Bright Wht	
S271CES410	V2709 15mm K5.6 HSW Std Res 79°C Brs	
S271CFS410	V2709 15mm K5.6 HSW Std Res 93°C Brs	
S271CJS410	V2709 15mm K5.6 HSW Std Res 141°C Brs	
S271CJS420	V2709 15mm K5.6 HSW Std Res 141°C Chr	
S271CKS410	V2709 15mm K5.6 HSW Std Res 182°C Brs	
S271CKS420	V2709 15mm K5.6 HSW Std Res 182°C Chr	



Code **Description** **Size**

HORIZONTAL SIDEWALL (HSW) QR

S271CCQ410	V2710 15mm K5.6 HSW Qck Res 68°C Brs	
S271CCQ420	V2710 15mm K5.6 HSW Qck Res 68°C Chr	
S271CCQ4w0	V2710 15mm K5.6 HSW Qck Res 68°C Bright Wht	
S271CCQ480	V2710 15mm K5.6 HSW Qck Res 68°C Nickel Teflon	
S271CEQ410	V2710 15mm K5.6 HSW Qck Res 79°C Brs	
S271CFQ410	V2710 15mm K5.6 HSW Qck Res 93°C Brs	
S271CJQ410	V2710 15mm K5.6 HSW Qck Res 141°C Brs	
S271CJQ420	V2710 15mm K5.6 HSW Qck Res 141°C Chr	

VERTICAL SIDEWALL (VSW) STANDARD RESPONSE

575751155	TY-B 15mm K5.6 VSW Std Res 68°C Brs	
575759155	TY-B 15mm K5.6 VSW Std Res 68°C Chr	
575754155	TY-B 15mm K5.6 VSW Std Res 68°C Wht	
575751200	TY-B 15mm K5.6 VSW Std Res 68°C Brs	
575759200	TY-B 15mm K5.6 VSW Std Res 68°C Chr	

VERTICAL SIDEWALL (VSW) QUICK RESPONSE

573751155	TY-FRB 15mm K5.6 VSW Qck Res 68°C Brs	
573759155	TY-FRB 15mm K5.6 VSW Qck Res 68°C Chr	
573754155	TY-FRB 15mm K5.6 VSW Qck Res 68°C Bright Wht	
573751200	TY-FRB 15mm K5.6 VSW Qck Res 93°C Brs	
573759200	TY-FRB 15mm K5.6 VSW Qck Res 93°C Chr	
573754200	TY-FRB 15mm K5.6 VSW Qck Res 93°C Bright Wht	

VERTICAL SIDEWALL (VSW) SR

575751155	TY-B 15mm K5.6 VSW Std Res 68°C Brs	
575759155	TY-B 15mm K5.6 VSW Std Res 68°C Chr	
575754155	TY-B 15mm K5.6 VSW Std Res 68°C Wht	
575751200	TY-B 15mm K5.6 VSW Std Res 68°C Brs	
575759200	TY-B 15mm K5.6 VSW Std Res 68°C Chr	

VERTICAL SIDEWALL (VSW) QR

573751155	TY-FRB 15mm K5.6 VSW Qck Res 68°C Brs	
573759155	TY-FRB 15mm K5.6 VSW Qck Res 68°C Chr	
573754155	TY-FRB 15mm K5.6 VSW Qck Res 68°C Bright Wht	
573751200	TY-FRB 15mm K5.6 VSW Qck Res 93°C Brs	
573759200	TY-FRB 15mm K5.6 VSW Qck Res 93°C Chr	
573754200	TY-FRB 15mm K5.6 VSW Qck Res 93°C Bright Wht	

Code Description Size

CONVENTIONAL (CUP) SR

S271WCS410	V2725 15mm K5.6 Conventional Std Res 68°C Brs	
S271WCS420	V2725 15mm K5.6 Conventional Std Res 68°C Chr	



CONVENTIONALAL (CUP) QR

S271WCQ410	V2726 15mm K5.6 Conventional Qck Res 68°C Brs	
S271WCQ420	V2726 15mm K5.6 Conventional Qck Res 68°C Chr	

COMMERCIAL CONCEALED SPRINKLERS 15MM LH/OH K5.6

S381PCQ410	V3802 15mm K5.6 Commercial Adj Concealed Qck Res 68°C	
S3806AS020	V38 Concealed Flush Cover Plate Chrome (suits V3802/V3806)	
S3806AS040	V38 Concealed Flush Cover Plate White (suits V3802/V3806)	
S3806AS0W0	V38 Concealed Flush Cover Plate Bright White (suits V3802/V3806)	

20MM STANDARD SPRAY SPRINKLERS OH K8.0

Upright (SSU), SR

S342ACS510	V3401 20mm K8.0 Upright Std Res 68°C Brs	
S342ACS520	V3401 20mm K8.0 Upright Std Res 68°C Chr	
S342ACS5W0	V3401 20mm K8.0 Upright Std Res 68°C Wht	

UPRIGHT (SSP) QR

S342ACQ510	V3402 20mm K8.0 Upright Qck Res 68°C Brs	
S342AJQ510	V3402 20mm K8.0 Upright Qck Res 141°C Brs	
S342ACQ520	V3402 20mm K8.0 Upright Qck Res 68°C Chr	
S342ACQ5W0	V3402 20mm K8.0 Upright Qck Res 68°C Wht	



PENDENT (SSP) SR

S342BCS510	V3405 20mm K8.0 Pendant Std Res 68°C Brs	
S342BCS520	V3405 20mm K8.0 Pendant Std Res 68°C Chr	
S342BCS5W0	V3405 20mm K8.0 Pendant Std Res 68°C Wht	

PENDENT (SSP) QR

S342BCQ510	V3406 20mm K8.0 Pendant Qck Res 68°C Brs	
S342BJQ510	V3406 20mm K8.0 Pendant Qck Res 141°C Brs	
S342BCQ520	V3406 20mm K8.0 Pendant Qck Res 68°C Chr	
S342BCQ5W0	V3406 20mm K8.0 Pendant Qck Res 68°C Wht	

Code Description Size

HORIZONTAL SIDEWALL (HSW) SR

S342CCS510 V3409 20mm K8.0 HSW Std Res 68°C Brs
S342CCS520 V3409 20mm K8.0 HSW Std Res 68°C Chr
S342CCS540 V3409 20mm K8.0 HSW Std Res 68°C Wht

HORIZONTAL SIDEWALL (HSW) QR

S342CCQ510 V3410 20mm K8.0 HSW Qck Res 68°C Brs
S342CCQ520 V3410 20mm K8.0 HSW Qck Res 68°C Chr
S342CCQ5W0 V3410 20mm K8.0 HSW Qck Res 68°C Bright Wht

RESIDENTIAL SPRINKLERS (FR)

RESIDENTIAL PENDENT (SSP)

S271KCQH2L V2732 15mm K4.9 Residential Pendant 68°C Chr
S271KCQHWL V2732 15mm K4.9 Residential Pendant 68°C Bright Wht

RESIDENTIAL HORIZONTAL SIDEWALL (HSW)

S271LCQA11 V2738 15mm K4.2 Resi HSW 68°C Brs
S271LCQA21 V2738 15mm K4.2 Resi HSW 68°C Chr
S271LCQAW1 V2738 15mm K4.2 Resi HSW 68°C Bright Wht

RESIDENTIAL CONCEALED SPRINKLER

S381NCQ41L V3806 15mm K5.6 Residential Adj Concealed 68°C

CONCEALED SPRINKLER COVER PLATES

S3806AS020 V38 Concealed Flush Cover Plate Chrome 57c
S3806AS040 V38 Concealed Flush Cover Plate White 57c
S3806AS0W0 V38 Concealed Flush Cover Plate Bright White 57c

RESIDENTIAL 'TRUE FLUSH' SPRINKLER

S291MCQB20 V2902 15mm K4.1 Resi Adj True Flush 68c Chr
S291MCQB40 V2902 15mm K4.1 Resi Adj True Flush 68c Wht

RESIDENTIAL 'TRUE FLUSH' ESCUTCHEON PLATES

SEF0000020 V29 Flush Chrome
SEF0000040 V29 Flush White
SEG0000020 V29 Extended Chrome
SEG0000040 V29 Extended White
SEH0000020 V29 Decorative Ceiling Ring Flush Chrome
SEH0000040 V29 Decorative Ceiling Ring Flush White

**Special Order*

DRY SPRINKLERS (QR)

S363BCQ42011611 V3606 K5.6 Dry Pen 300mm Qck Res 68°C Flush Esc Chr

Code Description Size

SECTION 11

EXTENDED COVERAGE SPRINKLERS

LIGHT HAZARD (ECLH)

PENDENT (SSP) SR K11.2

S342GCS610	V3411 20mm K11.2 Pen ECLH Std Res 68°C Brs
S342GCS620	V3411 20mm K11.2 Pen ECLH Std Res 68°C Chr
S342GCS640	V3411 20mm K11.2 Pen ECLH Std Res 68°C Wht

PENDENT (SSP) QR K11.2

S342GCQ610	V3412 20mm K11.2 Pen ECLH Qck Res 68°C Brs
S342GCQ620	V3412 20mm K11.2 Pen ECLH Qck Res 68°C Chr
S342GCQ640	V3412 20mm K11.2 Pen ECLH Qck Res 68°C Wht
S342GCQ6W0	V3412 20mm K11.2 Pen ECLH Qck Res 68°C Bright Wht

PENDENT (SSP) QR K14.0

S342GCS710	V3413 20mm K14.0 Pen ECLH Std Res 68°C Brs
S342GCS720	V3413 20mm K14.0 Pen ECLH Std Res 68°C Chr
S342GCS740	V3413 20mm K14.0 Pen ECLH Std Res 68°C Wht

PENDENT (SSP) SR K14.0

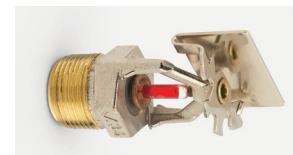
S342GCQ710	V3414 20mm K14.0 Pen ECLH Qck Res 68°C Brs
S342GCQ720	V3414 20mm K14.0 Pen ECLH Qck Res 68°C Chr
S342GCQ740	V3414 20mm K14.0 Pen ECLH Qck Res 68°C Wht

HORIZONTAL SIDEWALL (HSW) SR

S342HCS510	V3415 20mm K8.0 HSW ECLH Std Res 68°C Brs
S342HCS520	V3415 20mm K8.0 HSW ECLH Std Res 68°C Chr
S342HCS540	V3415 20mm K8.0 HSW ECLH Std Res 68°C Wht

HORIZONTAL SIDEWALL (HSW) QR

S342HCQ510	V3416 20mm K8.0 HSW ECLH Qck Res 68°C Brs
S342HCQ520	V3416 20mm K8.0 HSW ECLH Qck Res 68°C Chr
S342HCQ540	V3416 20mm K8.0 HSW ECLH Qck Res 68°C Wht



ORDINARY HAZARD (ECOH) SR K14.0

UPRIGHT

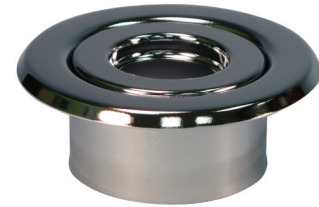
S342ECS710	V3425 20mm K14.0 Upr ECOH Std Res 68°C Brs
S342EES710	V3425 20mm K14.0 Upr ECOH Std Res 79°C Brs
S342EFS710	V3425 20mm K14.0 Upr ECOH Std Res 93°C Brs

Code	Description	Size
S342EJS710	V3425 20mm K14.0 Upr ECOH Std Res 141°C Brs	
PENDENT		
S342FCS710	V3421 20mm K14.0 Pen ECOH Std Res 68° Brs	
S342FCS720	V3421 20mm K14.0 Pen ECOH Std Res 68°C Chr	
S342FCS740	V3421 20mm K14.0 Pen ECOH Std Res 68°C Wht	

SPRINKLER ACCESSORIES

ESCUTCHEONS

SE0E000A20	V24 10mm 2 Piece Escutcheon 20mm Adj Chr
SE0E000AW0	V24 10mm 2 Piece Escutcheon 20mm Adj Bright Wht
SE0E000AB0	V24 10mm 2 Piece Escutcheon 20mm Adj Bright Black
EP1PCH10	1PC 10mm 1pce escutcheon Chr
EP1PWH10	1PC 10mm 1pce escutcheon Wht
SE11000020	V27 15mm 2 Piece Escutcheon 20mm Adj Chr
SE110000W0	V27 15mm 2 Piece Escutcheon 20mm Adj Bright Wht
SE110000B0	V27 15mm 2 Piece Escutcheon 20mm Adj Blk
SE21000020	V27 15mm 1 Piece Escutcheon Chr
SE21000040	V27 15mm 1 Piece Escutcheon Wht
SE12000020	V34 20mm 2 Piece Escutcheon 20mm Adj Chr
SE12000040	V34 20mm 2 Piece Escutcheon 20mm Adj Wht
SE120000W0	V34 20mm 2 Piece Escutcheon 20mm Adj Bright Wht



GUARDS

SA51000020	V27 15mm Sprinkler Guard Chrome
SA72000020	V34 20mm Sprinkler Guard Chrome
SD01R00410	V27 15mm Pendant Shield Kit pkt 10
SA51Q00020	V27 15mm Upright Sprinkler Guard Chr with Shield

WRENCHES

ST01000000	V27 15mm Sprinkler Wrench Open End (suits exposed sprinklers)
ST12000002	V272 15mm Sprinkler Socket Recessed (suits semi recessed sprinklers)
ST51M00000	V29 15mm Sprinkler Socket Suit V2902 (suits Residential Flush sprinklers)
ST02000000	V34 20mm Sprinkler Wrench Open End (suits exposed sprinklers)
ST22000000	V34 20mm Sprinkler Socket Recessed (suits semi recessed sprinklers)
ST21N00000	V384 15mm Sprinkler Socket suit V38 Conc heads (suits concealed sprinklers)
ST92000800	V44 20mm Sprinkler Wrench Open End (suits ESFR sprinklers)
ST93000900	V46 25mm Sprinkler Wrench Open End (suits LP46 Sprinklers)

Code **Description** **Size**

SPARES BOXES - RED WITH WHITE LETTERING

SPKB0X-6	6 Head spares Box RED	
SPB0X-12	12 Head Spares Box RED	
SPBOX-24	24 Head Spares Box RED	
SPBOX-36	stores 36 Sprinkler Heads (suits High Hazard & ESFR)	

DUST BOXES

DUSTBOX	Sprinkler Head Dust installation Box Galvanised	
---------	-------------------------------------------------	--

BAFFLE PLATES / WATER SHIELDS

W-SHIELD-15	Model PS10-2	
W-SHIELD-15R	Model PS120-1	
W-SHIELD-20	Model PS120-2	
BAFF-RA-15	Model WFSR-F	

ELECTRICAL SWITCHES / MONITORS

ELECTRICAL SWITCHES

Pressure Switches

PS1340104	Model PS10-2	
PS1341203	Model PS120-1	
PS1341204	Model PS120-2	
PS1010080	Model WFSR-F	



PRESSURE SWITCHES FOR PUMPS

PS1370010	Potter Model ADPS300-1B	
PS1370080	Potter Model PCS-300-1B	
PS-SQR-D	Square D Model 9012 GAW6	

FLOW SWITCHES

FS1144440	Model VSR-S 25-50MM	
FS1144450	Model VSR-C 50MM (COPPER)	
FS1144402	Model VSR 50MM	
FS1144425	Model VSR 65MM	
FS1144403	Model VSR 80MM	
FS1144404	Model VSR 100MM	
FS1144406	Model VSR 150MM	
FS1144408	Model VSR 200MM	



CONTROL VALVE SUPERVISORY SWITCHES / MONITORS

CLASS B MONITORS

P1000040	Model RBVS (Suits Ball Valve)	
P1010106	Model OSYSUA-1 (Suits OSY Gate Valve)	
P1010206	Model OSYSUA-2 (Suits OSY Gate Valve)	
P1010201	Model PTS-C Switch plug Type (Suits Valve with Handwheel)	
P1010203	Model PCVS-2 (Suits PIV & BFLY Valve)	

Code Description Size

A' CLASS MONITORS TO AS2118.1 & 2419.1

AMTRON	Model 502 LED Monitor with Bracket
AMT-V705	Model 502 LED Monitor installed on Butterfly
AMT-GATE	Model 502 LED Monitor installed on Gate Valve OS&Y (Steel Spindle)

**For A Class Monitoring of other types of valves (s/s spindle / Lug) please contact Sales*

GENERAL SUPPLIES

HEMP

HEMP-26	Hemp 18000 TEX Reel 26mtr
HEMP-44	Hemp Cop 8 ply 18000 TEX 44mtr



BARILLA SOAP

SOAP-2	Barilla Soap (Pack of 2) Per EA
--------	---------------------------------



BAGS OF RAGS

BAGRAGS-Tx10	Bag of Rags 10kg T-shirt Material Coloured (Pack of 10)
--------------	---------------------------------------------------------

THREAD SEALANT

SEALANT-AN1	Titaseal Anerobic Thread Sealant 100mm Tube
-------------	---------------------------------------------

LUBRICANT

RG-LUBE	Pipe Joining Lubricant Watermark
VIC-LUBE	Victaulic Pipe Joining Lubricant 1Quartz
VIC-LUBETUBEX12	Victaulic Pipe Joining Lubricant Pack of 12 Tubes (1oz)
VLUBE-S/TUBE	Victaulic Pipe Joining Lubricant Single Tube (1oz)

PADLOCKS (003) AND CHAIN STRAPS

PADLOCK-003LW	003 Padlocks Lockwood
PADLOCK-003BR	003 Padlocks Brass
CHAIN-500	Chain Strap 500mmL (Control Vlv) (3mm link)
CHAIN-700	Chain Strap 700mmL (W&T) (3mm link)



Code Description Size

TOOLS AND ACCESSORIES

VICTAULIC ROLL AND CUT GROOVING MACHINES

ROLL GROOVER - 'FIELD MANUAL (HAND HELD)

These tools are designed for light duty manual field use and do not require a power source to operate. Alternatively, select field manual tools may also be operated with a compatible power drive

VE12	VE12 - Field Manual Tool
VE26	VE26 - Field Manual Tool
VE26/46-PDK	VE26/46 Power Drive Kit
VE46	VE46 - Field Manual Tool

ROLL GROOVER - FIELD PORTABLE

These tools are designed for light to heavy duty field use with tool components that can be easily unassembled and toted around the job site

VE106/107	VE106/107 - Field Portable Tool
VE206	VE206 -Field Portable Tool
VE206-PDK	VE206 - Power Drive Kit

ROLL GROOVER - FIELD FABRICATION

- Designed for heavy duty repetitive field use
- Requires External Power Source

VE272SFS	VE272SFS Field Fabrication Tool
VE416FS	VE416FS Field Fabrication Tool
VE206-PDK	VE206-PDK Field Fabrication Tool

SELF CONTAINED POWER DRIVE

VE270FSD/VE271FSD	VE270FSD/VE271FSD Field Fabrication Tool
VE416FSD/VE417FSD	VE416FSD/VE417FSD Field Fabrication Tool
VE450	VE450 Field Fabrication Tool

ROLL GROOVER - PLANT/SHOP FABRICATION

These tools are designed for heavy duty repetitive plant or shop fabrication use.

VE268	VE268 Shop Fabrication Tool
VE414MC	VE414MC Shop Fabrication Tool
VE460	VE460 Shop Fabrication Tool
VE872	VE872 Shop Fabrication Tool

CUT GROOVER - FIELD MANUAL (HAND HELD)

These tools are designed for light duty manual field use

VG	VG Cut Field Tool
----	-------------------

CUT GROOVER - FIELD FABRICATION

Designed for heavy duty repetitive field use

VG28GD	VG28GD Cut Field +D4177:D4185Groover
VG28GD-ABR	VG28GD-ABR Cut Field Tool

SECTION 11

Code	Description	Size
VDG26GD	VDG26GD Cut Field Tool	
VG26GD-COR	VG26GD-COR Cut Field Tool	
VG824	VG824 Cut Field Tool	
VG824-ABR	VG824-ABR Cut Field Tool	
VG824DG	VG824DG Cut Field Tool	
VG824-COR	VG824-COR Cut Field Tool	
VG828	VG828 Cut Field Tool	

CUT GROOVER - FIELD MOTORIZED

Designed for heavy duty repetitive field use

VG416	VG416 Field Motorized Tool	
-------	----------------------------	--

PLASTIC GROOVER (PVC)

VPG26	VPG26 Plastic Grooving Tool	
VPG824	VPG824 Plastic Grooving Tool	

HOLE CUTTING TOOLS

HCT904	HCT904 Hole Cutting Tools	
HCT908	HCT908 Hole Cutting Tools	
VHCT900	VHCT900 Hole Cutting Tools	
Vic-Tap II	Vic-Tap II Hole Cutting Tools	

TOOL ACCESSORIES

These tool accessories are designed to assist in the operation and grooving procedure of a variety of Victaulic tools as specifically outlined.

VPD752	VPD752 Power Drive for Roll Grooving Tools	
PMULE2	Power Mule II Power Drive for Cut Grooving Tools	
VAPS112	VAPS112 Pipe Stand	
VAPS224	VAPS224 Pipe Stand	
VAPS1672	VAPS1672 Pipe Stand	
PT100A/PT101	PT100A/PT101 Pipe Tape	
PT102	PT102 Pipe Tape	

*** For all Tool enquiries please contact Sales.**